

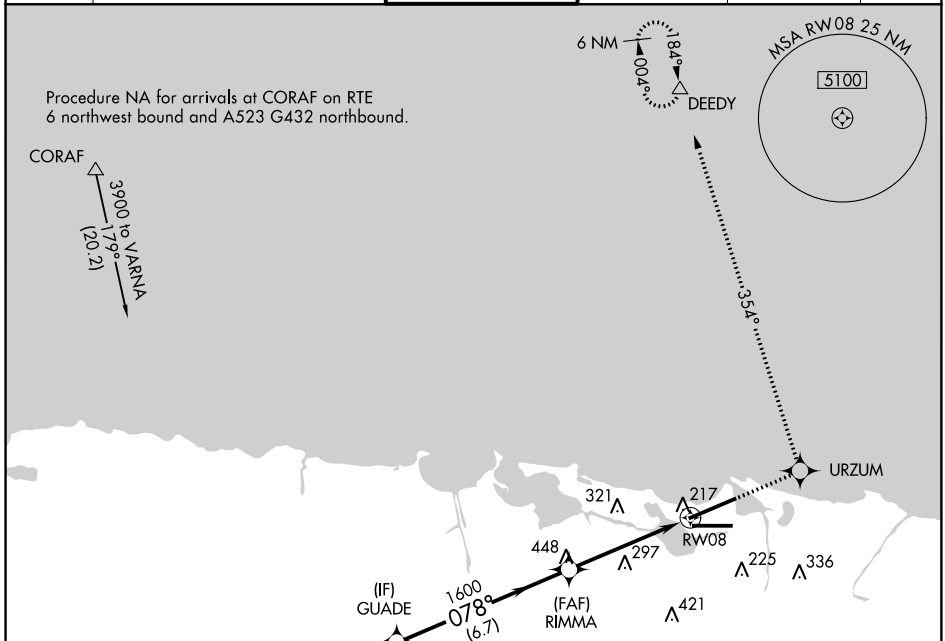
APP CRS	Rwy Idg	9384
078°	TDZE	9
	Apt Elev	9

RNAV (GPS) RWY 8

LUIS MUNOZ MARIN INTL (SJU)(TJSJ)

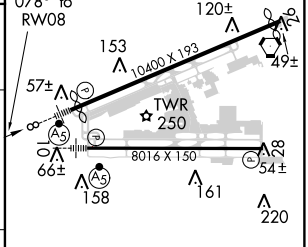
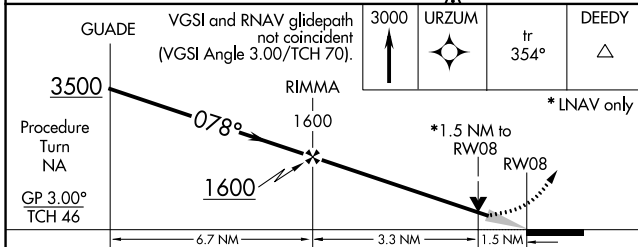
T	WAAS VNAV NA. For uncompensated Baro-VNAV systems, LNAV/VNAV NA below -15°C (5°F) or above 48°C (118°F). DME/DME RNP-0.3 NA.	MALSR	MISSED APPROACH: Climb to 3000 direct URZUM and on track 354° to DEEDY and hold.
----------	--	-------	--

D-ATIS	SAN JUAN APP CON	SAN JUAN TOWER	GND CON	CLNC DEL	CPDLC
125.8	119.4 269.2 (WEST & SW) 120.9 290.2 (NORTH & EAST)	132.05 257.8	121.9 348.6	126.4 284.6	



(IAF) VARNNA	(IF) GUADE	(FAF) RIMMA	DEEDY
3500 078° (7)	1600 078° (6.7)	1600 078° (6.7)	

ELEV 9	TDZE 9
--------	--------



CATEGORY	A	B	C	D
LNAV/VNAV DA	530-1¼ 521 (600-1¼)			
LNAV MDA	560-½ 551 (600-½)	560-1 551 (600-1)	560-1¼ 551 (600-1¼)	
CIRCLING	600-1 591 (600-1)	600-½ 591 (600-½)	600-2 591 (600-2)	

REIL Rwy 26
HIRL Rwy 8-26 and 10-28

SE-3, 18 JUL 2019 to 15 AUG 2019

SE-3, 18 JUL 2019 to 15 AUG 2019