

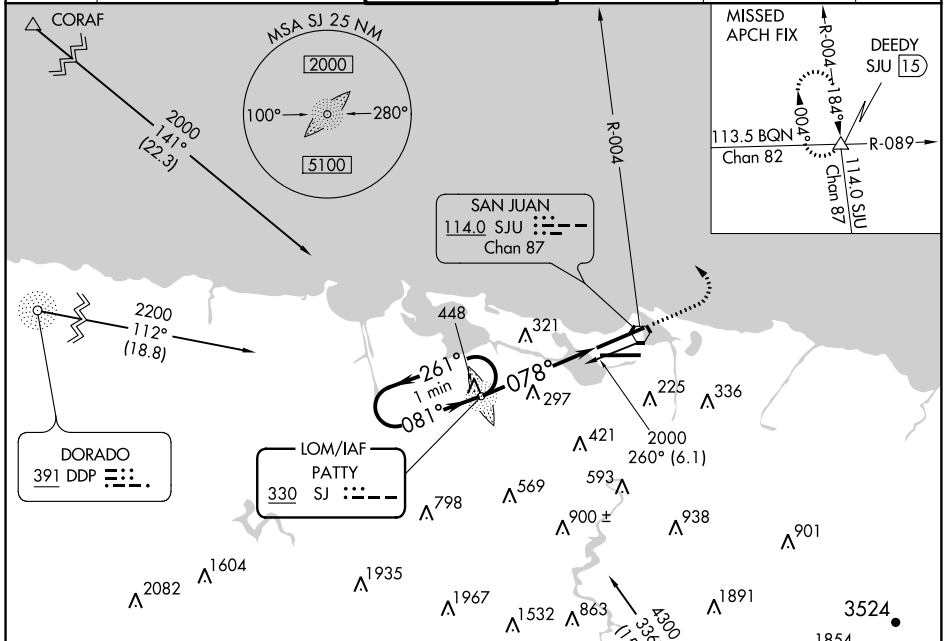
LOM SJ	APP CRS	Rwy Idg	9384
330	078°	TDZE	9
		Apt Elev	9

NDB RWY 8

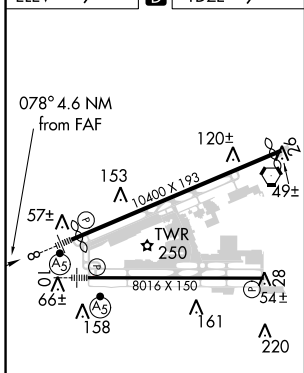
LUIS MUNOZ MARIN INTL (SJU)(TJSJ)

MALS	MISSED APPROACH: Climb to 2000, then climbing left turn to 3000 via SJU VORTAC R-004 to DEEDY Int/SJU 15 DME and hold.
-------------	--

D-ATIS	SAN JUAN APP CON	SAN JUAN TOWER	GND CON	CLNC DEL	CPDLC
125.8	119.4 269.2 (WEST & SW) 120.9 290.2 (NORTH & EAST)	132.05 257.8	121.9 348.6	126.4 284.6	

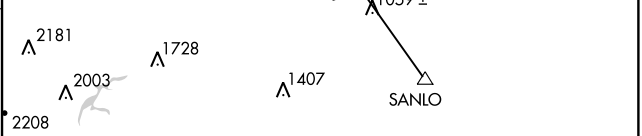


ELEV 9	D	TDZE 9
--------	----------	--------



REIL Rwy 26
HIRL Rwys 8-26 and 10-28
FAF to MAP 4.6 NM

Knots	60	90	120	150	180
Min:Sec	4:36	3:04	2:18	1:50	1:32



One Minute Holding Pattern

PATTY LOM

2000 ← 261° / 081° → 1700

3300 (15.3) → 1059±

3.36° TCH 46

4.6 NM

VGSI and descent angles not coincident (VGSI Angle 3.00/TCH 70).

2000, 3000, DEEDY

SJU R-004

CATEGORY	A	B	C	D
S-8	600-¾ 591 (600-¾)		600-1 591 (600-1)	600-1½ 591 (600-1½)
CIRCLING	600-1 591 (600-1)		600-1½ 591 (600-1½)	600-2 591 (600-2)

SE-3, 18 JUL 2019 to 15 AUG 2019

SE-3, 18 JUL 2019 to 15 AUG 2019