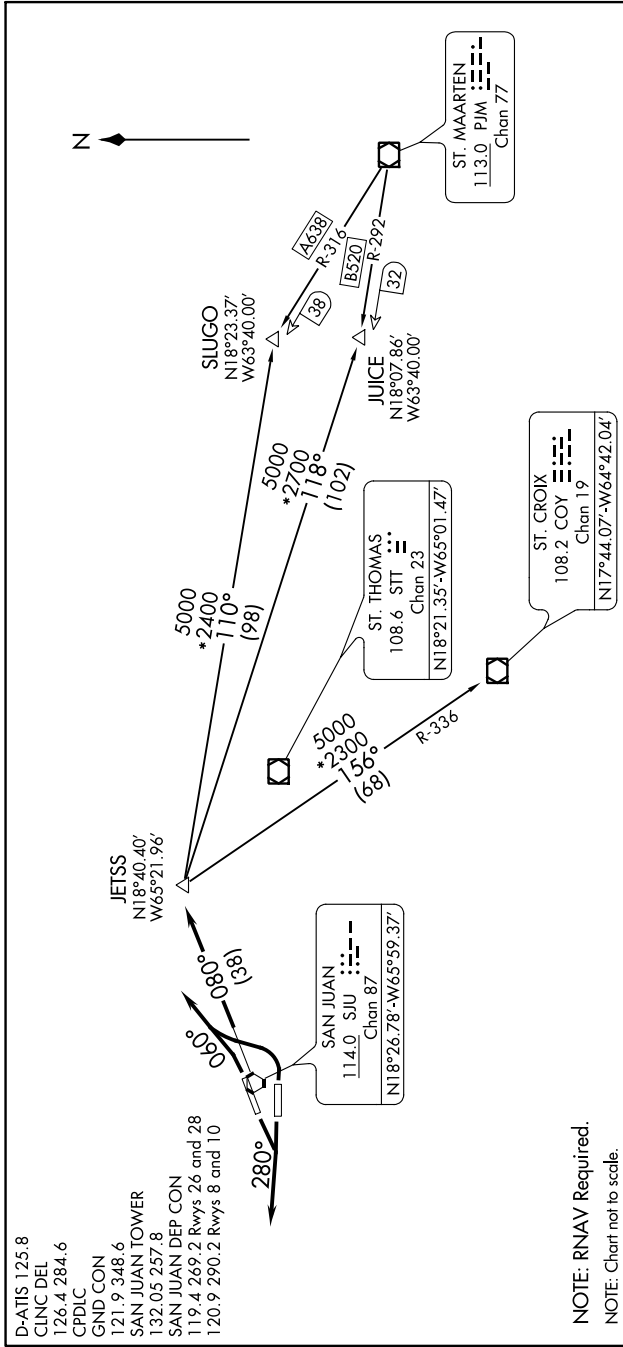


JETSS ONE DEPARTURE

AL-784 (FAA)

LUIS MUNOZ MARIN INTL (SJU)(TJSJ)
SAN JUAN, PUERTO RICO

SE-3: 18 JUL 2019 to 15 AUG 2019



NOTE: RNAV Required.
NOTE: Chart not to scale.

DEPARTURE ROUTE DESCRIPTION

TAKE-OFF RUNWAYS 8 AND 10: Turn left heading 060° for vector to intercept SJU R-080 to JETSS INT. Thence....

TAKE-OFF RUNWAYS 26 AND 28: Fly heading 280° for vector to intercept SJU R-080 to JETSS INT. Thence....

...Maintain 5000' unless assigned lower altitude. Expect clearance to FL 280 or requested altitude, if lower, ten (10) minutes after departure.

JUICE TRANSITION (JETSS1.JUICE): From over JETSS INT direct to JUICE DME. Thence as filed.

SLUGO TRANSITION (JETSS1.SLUGO): From over JETSS INT direct to SLUGO DME. Thence as filed.

ST. CROIX TRANSITION (JETSS1.COY): From over JETSS INT direct to COY VOR/DME. Thence as filed.

SE-3: 18 JUL 2019 to 15 AUG 2019