

(CRSTL1.CRSTL) 17173

# CRSTL ONE DEPARTURE

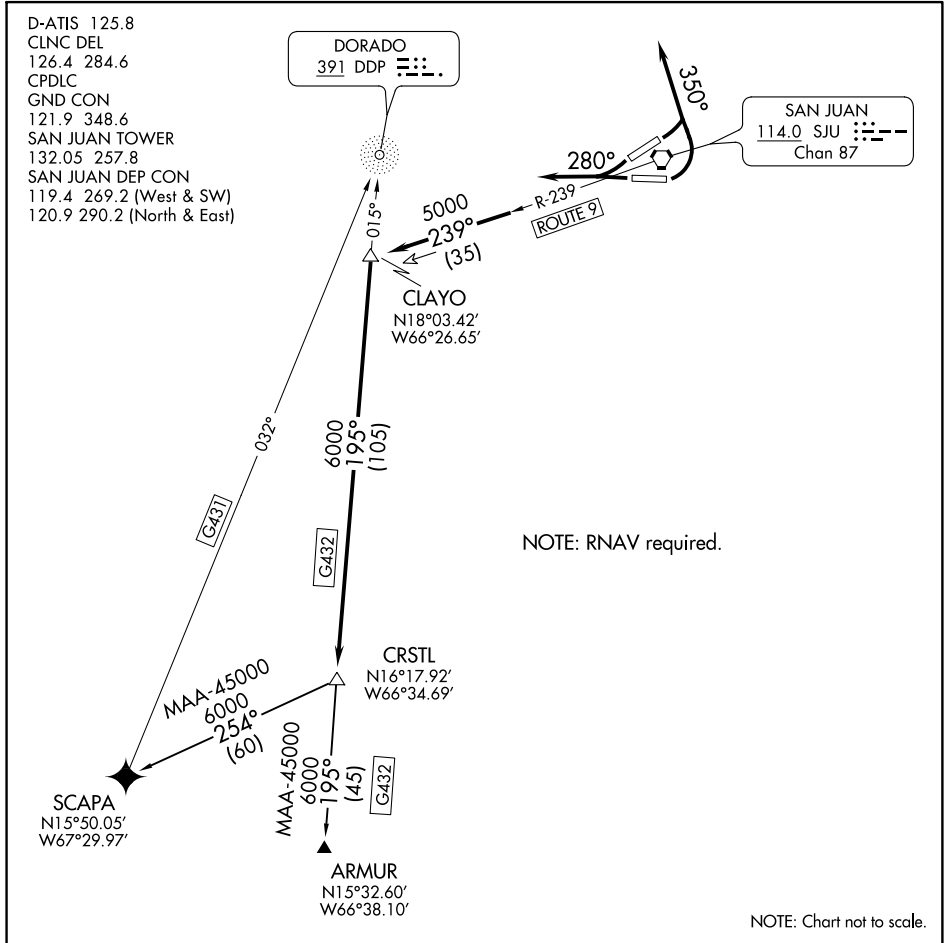
AL-784 (FAA)

LUIS MUNOZ MARIN INTL (SJU)(TJSJ)  
SAN JUAN, PUERTO RICO

D-ATIS 125.8  
 CLNC DEL 126.4 284.6  
 CPDLC  
 GND CON 121.9 348.6  
 SAN JUAN TOWER 132.05 257.8  
 SAN JUAN DEP CON 119.4 269.2 (West & SW)  
 120.9 290.2 (North & East)

DORADO  
 391 DDP

SAN JUAN  
 114.0 SJU  
 Chan 87



NOTE: RNAV required.

NOTE: Chart not to scale.

SE-3: 18 JUL 2019 to 15 AUG 2019

SE-3: 18 JUL 2019 to 15 AUG 2019



## DEPARTURE ROUTE DESCRIPTION

TAKEOFF RUNWAYS 8 AND 10: Turn left heading 350° for vector to intercept SJU R-239 to CLAYO INT. Then via G432 to CRSTL INT. Thence....

TAKEOFF RUNWAYS 26 AND 28: Fly heading 280° for vector to intercept SJU R-239 to CLAYO INT. Then via G432 to CRSTL INT. Thence....

....maintain 5000' unless assigned lower altitude. Expect clearance to FL280 or requested altitude, if lower, ten minutes after departure.

ARMUR TRANSITION (CRSTL1.ARMUR): From over CRSTL INT via G432 (DDP bearing 015°) to ARMUR INT.

SCAPA TRANSITION (CRSTL1.SCAPA): From over CRSTL INT direct to SCAPA INT.

CRSTL ONE DEPARTURE  
 (CRSTL1.CRSTL) 28APR94

SAN JUAN, PUERTO RICO  
 LUIS MUNOZ MARIN INTL (SJU)(TJSJ)