

# BEANO THREE ARRIVAL (RNAV)

SAN JUAN APP CON  
(West & Southwest)  
119.4 269.2  
(North & East)  
120.9 290.2  
D-ATIS  
125.8

## ARRIVAL ROUTE DESCRIPTION

ELMUC TRANSITION (ELMUC.BEANO3):

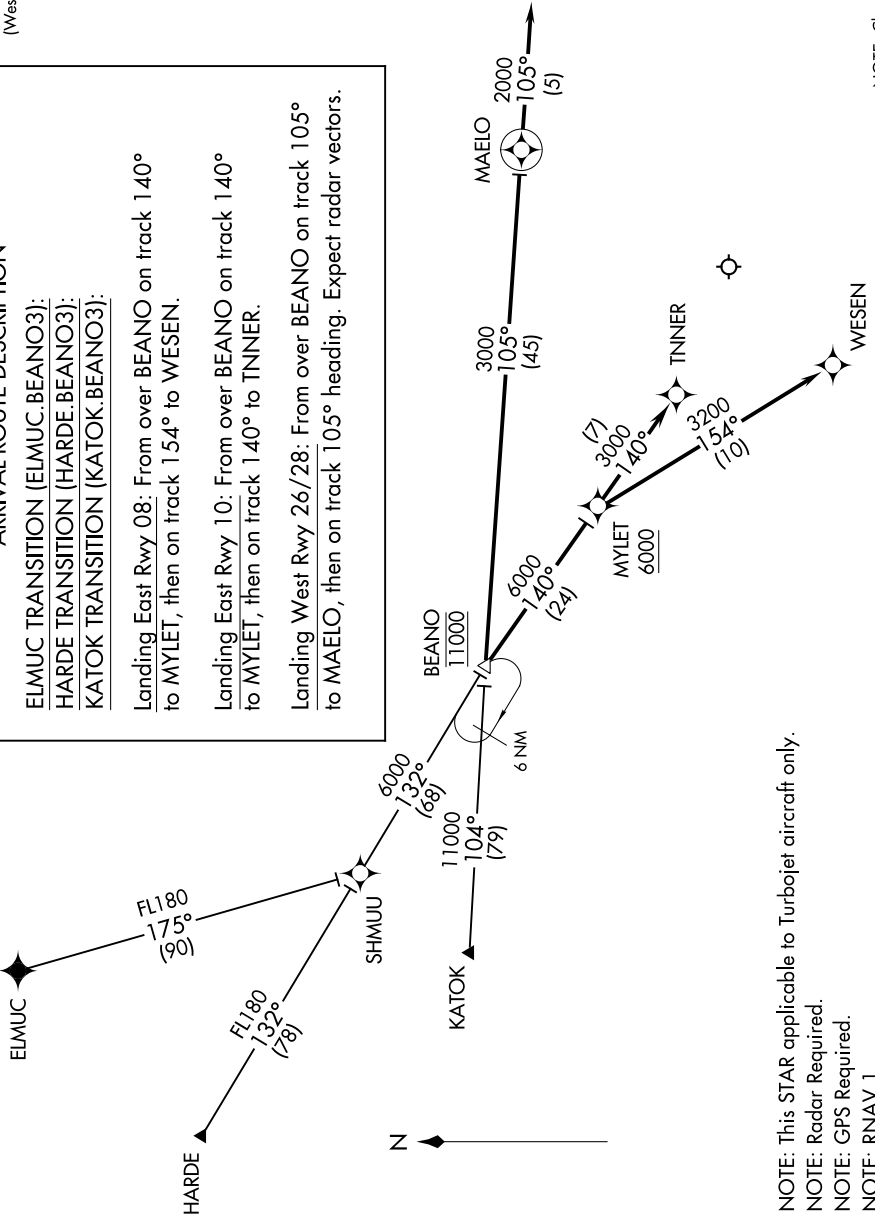
HARDE TRANSITION (HARDE.BEANO3):

KATOK TRANSITION (KATOK.BEANO3):

Landing East Rwy 08: From over BEANO on track 140° to MYLET, then on track 154° to WESEN.

Landing East Rwy 10: From over BEANO on track 140° to MYLET, then on track 140° to TNNER.

Landing West Rwy 26/28: From over BEANO on track 105° to MAELO, then on track 105° heading. Expect radar vectors.



NOTE: This STAR applicable to Turbojet aircraft only.  
NOTE: Radar Required.  
NOTE: GPS Required.  
NOTE: RNAV 1.

NOTE: Chart not to scale.

# BEANO THREE ARRIVAL (RNAV)