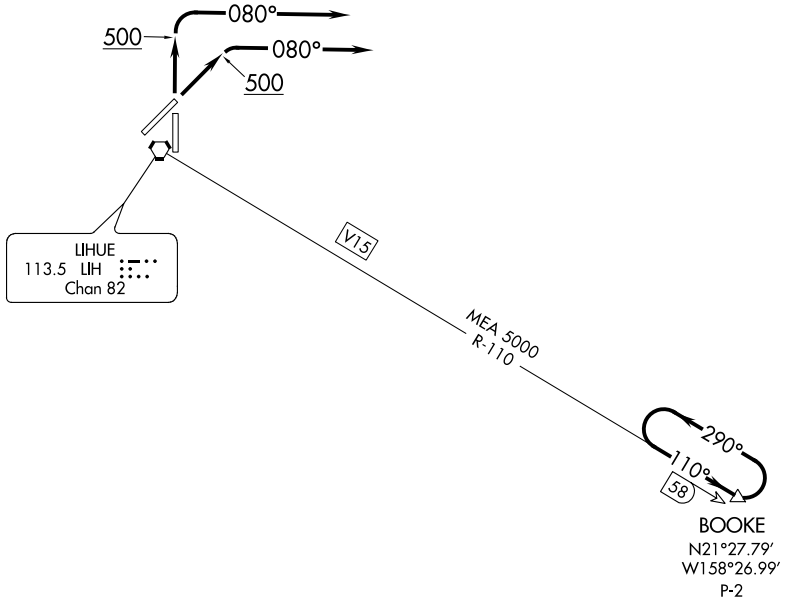


ATIS  
127.2  
GND CON  
121.9  
LIHUE TOWER ★  
118.9 (CTAF) 263.1  
HCF CENTER  
126.5 269.4



PAC, 20 JUN 2019 to 15 AUG 2019

PAC, 20 JUN 2019 to 15 AUG 2019

NOTE: DME required.

NOTE: Chart not to scale.



DEPARTURE ROUTE DESCRIPTION

TAKEOFF RUNWAYS 3 and 35: Climb runway heading to 500, then climbing right turn to heading 080, expect radar vectors to intercept LIH R-110 to BOOKE DME fix. MEA 5000.

LOST COMMUNICATIONS: If not in contact with Honolulu CERAP one minute after departure, maintain SID heading until 10 NM east of LIH VORTAC, then intercept LIH R-110 to BOOKE DME fix. MEA 5000.