

APP CRS 126°	Rwy ldg TDZE Apt Elev	7959 597 597
------------------------	-----------------------------	---

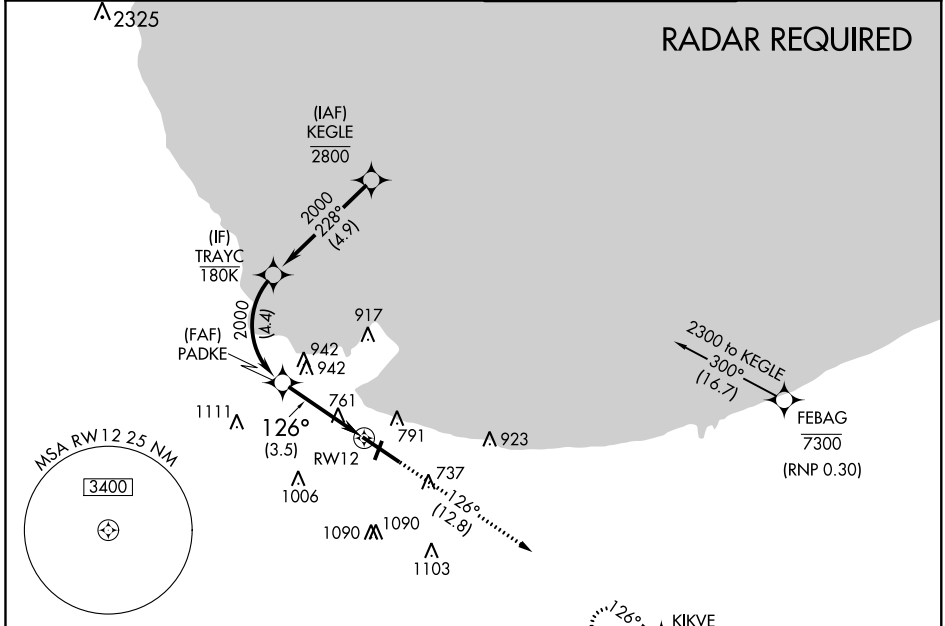
RNAV (RNP) Z RWY 12

GARY/CHICAGO INTL (GYY)

For uncompensated Baro-VNAV systems, procedure NA below -16°C (4°F) or above 45°C (113°F). RF and GPS required. Procedure NA for wingspans greater than 136 feet.

MISSED APPROACH:
Climb to 2400 on track
126° to KIKVE and hold.

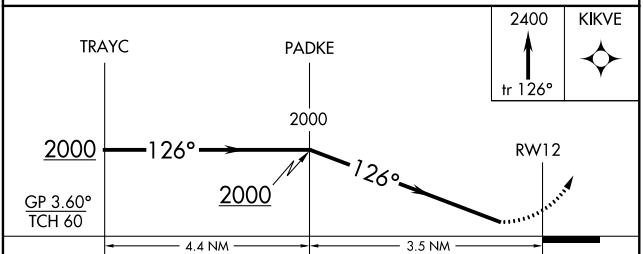
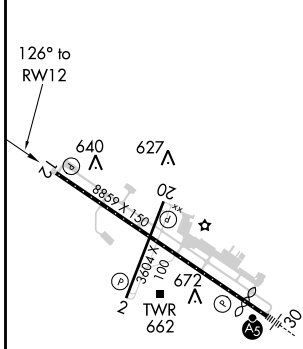
ATIS 134.575	CHICAGO APP CON 133.1 285.6	GARY TOWER * 125.6 (CTAF) 0	GND CON 121.9
------------------------	---------------------------------------	---------------------------------------	-------------------------



EC-2, 18 JUL 2019 to 15 AUG 2019

EC-2, 18 JUL 2019 to 15 AUG 2019

ELEV 597	D	TDZE 597
----------	----------	----------



CATEGORY	A	B	C	D
RNP 0.13 DA	978-1 1/8	381 (400-1 1/8)		NA
RNP 0.30 DA	1056-1 3/8	459 (500-1 3/8)		NA

REIL Rwy 2, 12 and 20
HIRL Rwy 12-30
MIRL Rwy 2-20

GARY, INDIANA
Amdt 1 25JUN15

41°37'N - 87°25'W

GARY/CHICAGO INTL (GYY) RNAV (RNP) Z RWY 12

AUTHORIZATION REQUIRED