

ZAPPA FOUR DEPARTURE (RNAV)

FORT LAUDERDALE, FLORIDA

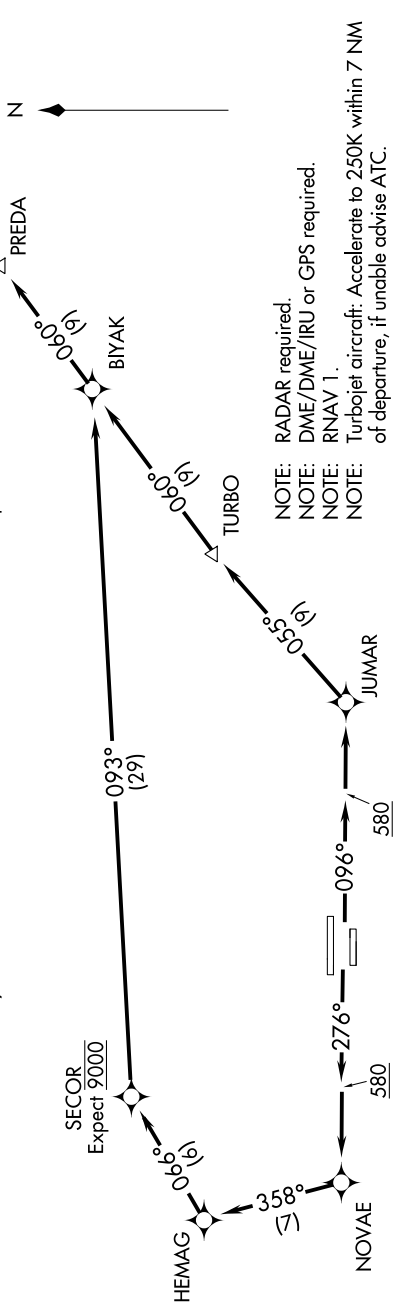
SE-3, 18 JUL 2019 to 15 AUG 2019

**TOP ALTITUDE:
3000**

D-ATIS 135.0
 CLNC DEL 128.4
 CPDIC
 GND CON 121.4
 FORT LAUDERDALE TOWER 119.3 257.8
 MIAMI DEP CON 126.05 251.1

TAKEOFF MINIMUMS

Rwys 10L/R, 28L/R: Standard with minimum climb of 500' per NM to 580.



- NOTE: RADAR required.
- NOTE: DME/DME/IRU or GPS required.
- NOTE: RNAV 1.
- NOTE: Turbojet aircraft: Accelerate to 250K within 7 NM of departure, if unable advise ATC.

NOTE: Chart not to scale.

DEPARTURE ROUTE DESCRIPTION

TAKEOFF RWYS 10L/R: Climb heading 096° to 580, then direct JUMAR, then on depicted route to ZAPPA, thence. . . .

TAKEOFF RWYS 28L/R: Climb heading 276° to 580, then direct NOVAE, then on depicted route to ZAPPA, thence. . . .

. . . maintain 3000 or as assigned by ATC. Expect clearance to filed altitude 10 minutes after departure.

ZAPPA FOUR DEPARTURE (RNAV)

SE-3, 18 JUL 2019 to 15 AUG 2019