

WAAS CH <b>48902</b> <b>W10A</b>	APP CRS <b>096°</b>	Rwy Idg TDZE Apt Elev	<b>8424</b> <b>7</b> <b>65</b>
--	------------------------	-----------------------------	--------------------------------------

# RNAV (GPS) Z RWY 10L

FORT LAUDERDALE/HOLLYWOOD INTL (FLL)

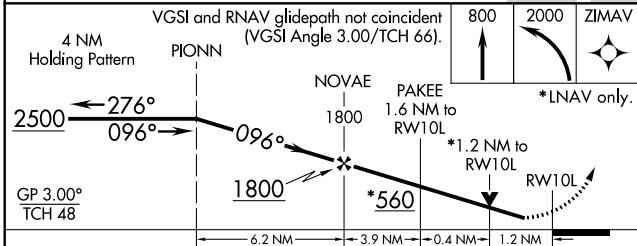
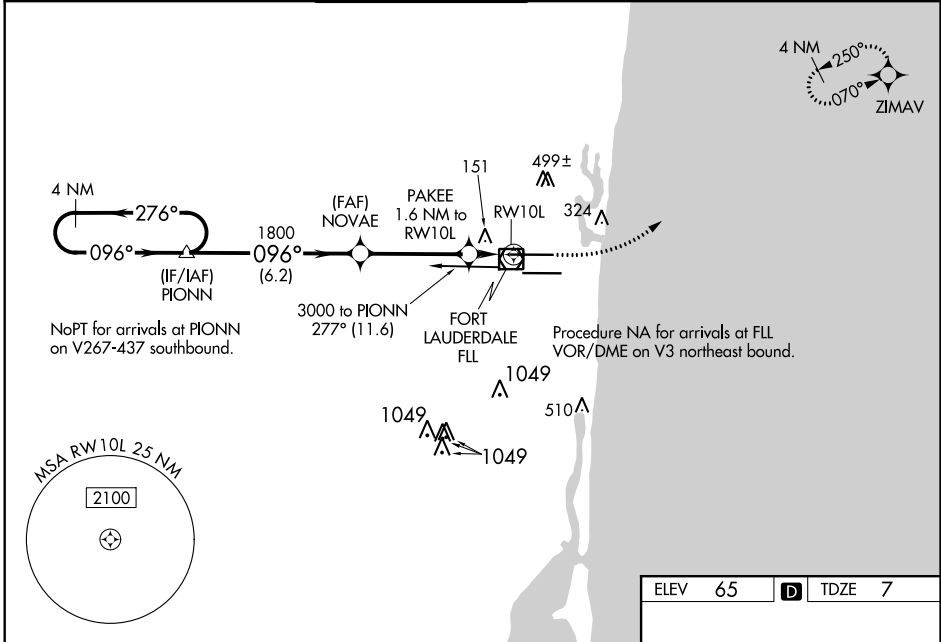
RNP APCH.

▼ For uncompensated Baro-VNAV systems, LNAV/VNAV NA below 5°C (40°F) or above 54°C (130°F). For inop MALS, increase LNAV Cat A, B visibility to RVR 5500. Rwy 10L helicopter visibility reduction below RVR 4000 NA. Inop table does not apply to LPV all Cats. LNAV procedure NA during simultaneous operations. Use of FD or AP required during simultaneous operations. Simultaneous approach authorized.

MALS

MISSED APPROACH: Climb to 800 then climbing left turn to 2000 direct ZIMAV and hold.

D-ATIS <b>135.0</b>	MIAMI APP CON <b>133.775 285.6</b>	<b>FORT LAUDERDALE TOWER</b> <b>119.3 257.8</b>	GND CON <b>121.4</b>	CLNC DEL <b>128.4</b>	CPDLC
------------------------	---------------------------------------	--	-------------------------	--------------------------	-------



ELEV 65	TDZE 7
---------	--------

212  
66  
9000 X 150  
8000 X 150  
126  
194  
114  
158  
77±  
28L  
28R  
UP 0.4%  
DOWN 1.0%

HIRL Rwy 10L-28R and 10R-28L

CATEGORY	A	B	C	D
LPV DA		257/40	250 (200-¾)	
LNAV/VNAV DA		477/57	470 (500-1¼)	
LNAV MDA	460/40	453 (400-¾)	460/45	453 (400-⅔)
CIRCLING	680-1	615 (700-1)	800-2 735 (800-2)	800-2¼ 735 (800-2¼)

SE-3: 18 JUL 2019 to 15 AUG 2019

SE-3: 18 JUL 2019 to 15 AUG 2019