

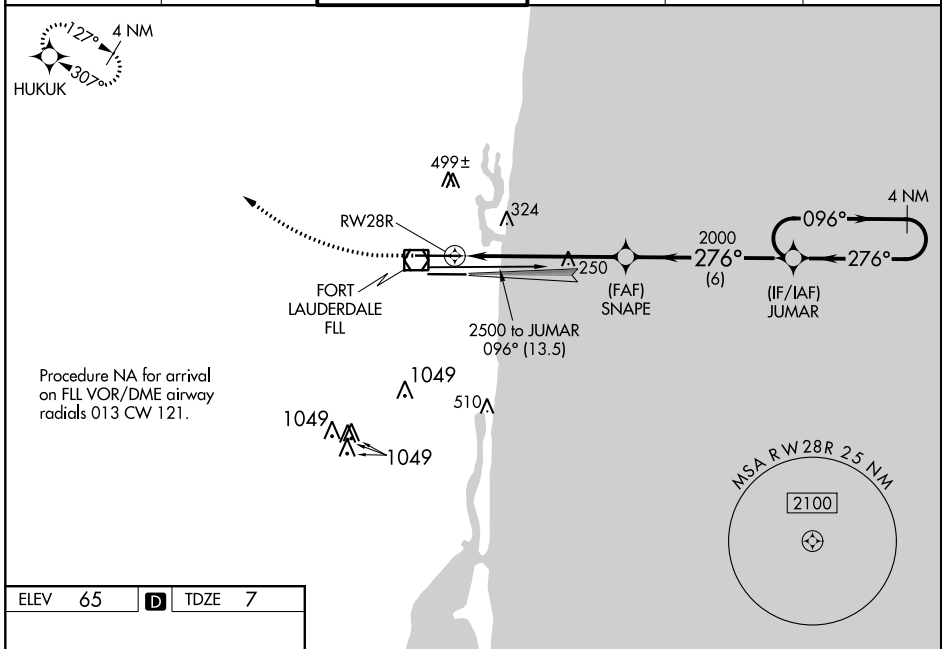
WAAS CH <b>61002</b> <b>W28A</b>	APP CRS <b>276°</b>	Rwy Idg TDZE Apt Elev	<b>8394</b> <b>7</b> <b>65</b>
--	------------------------	-----------------------------	--------------------------------------

# RNAV (GPS) Y RWY 28R

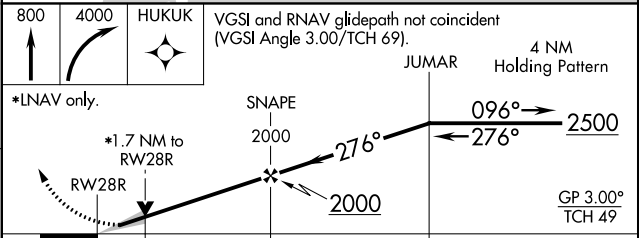
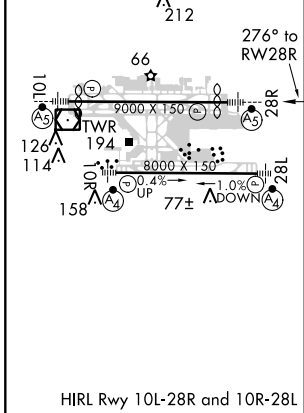
FORT LAUDERDALE/HOLLYWOOD INTL (FLL)

RNP APCH. <p>▼ For uncompensated Baro-VNAV systems, LNAV/VNAV NA below 5°C (40°F) or above 54°C (130°F). Inop table does not apply to LPV all Cats. LNAV procedure NA during simultaneous operations. Use of FD or AP required during simultaneous operations. Simultaneous approach authorized. For inop ALS, increase LNAV Cats C/D visibility to 1¾ SM.</p>	MALSR 	MISSED APPROACH: Climb to 800 then climbing right turn to 4000 direct HUKUK and hold, continue climb-in-hold to 4000.
---	-----------	--

D-ATIS <b>135.0</b>	MIAMI APP CON <b>133.775 285.6</b>	<b>FORT LAUDERDALE TOWER</b> <b>119.3 257.8</b>	GND CON <b>121.4</b>	CLNC DEL <b>128.4</b>	CPDLC
------------------------	---------------------------------------	--	-------------------------	--------------------------	-------



ELEV 65	<b>D</b>	TDZE 7
---------	----------	--------



CATEGORY	A	B	C	D
LPV DA		257/40	250 (200-¾)	
LNAV/VNAV DA		594-1½	587 (600-1½)	
LNAV MDA	620/24	613 (700-½)	620-1¾	613 (700-1¾)
<b>C</b> CIRCLING	680-1	615 (700-1)	800-2 735 (800-2)	800-2¼ 735 (800-2¼)

SE-3, 18 JUL 2019 to 15 AUG 2019

SE-3, 18 JUL 2019 to 15 AUG 2019