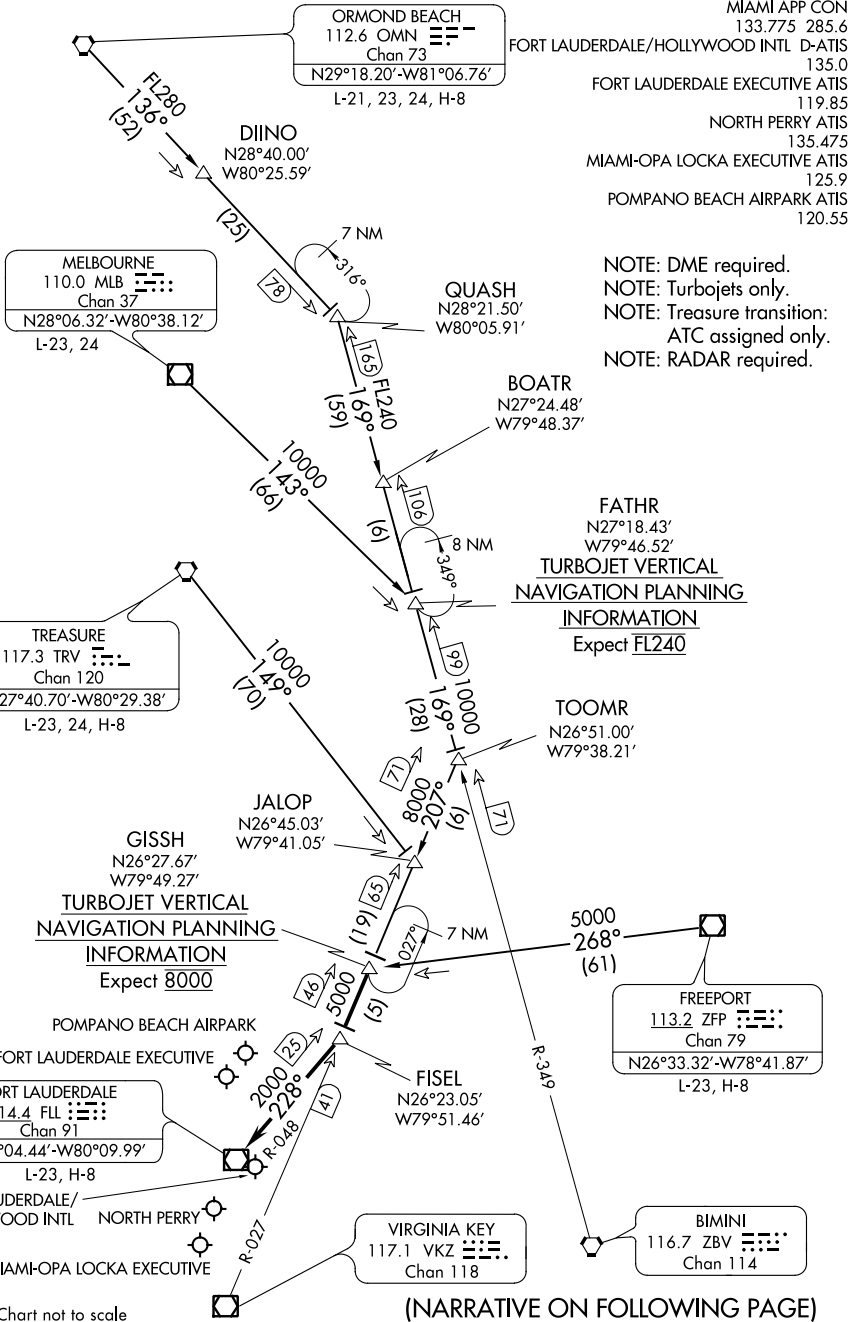


GISSH FIVE ARRIVAL

FORT LAUDERDALE, FLORIDA



MIAMI APP CON 133.775 285.6
 FORT LAUDERDALE/HOLLYWOOD INTL D-ATIS 135.0
 FORT LAUDERDALE EXECUTIVE ATIS 119.85
 NORTH PERRY ATIS 135.475
 MIAMI-OPA LOCKA EXECUTIVE ATIS 125.9
 POMPANO BEACH AIRPARK ATIS 120.55

NOTE: DME required.
 NOTE: Turbojets only.
 NOTE: Treasure transition: ATC assigned only.
 NOTE: RADAR required.

FATHR
 N27°18.43'
 W79°46.52'
TURBOJET VERTICAL NAVIGATION PLANNING INFORMATION
 Expect FL240

TOOMR
 N26°51.00'
 W79°38.21'

GISSH
 N26°27.67'
 W79°49.27'
TURBOJET VERTICAL NAVIGATION PLANNING INFORMATION
 Expect 8000

FREEPORT
 113.2 ZFP
 Chan 79
 N26°33.32'-W78°41.87'
 L-23, H-8

FORT LAUDERDALE
 114.4 FL
 Chan 91
 N26°04.44'-W80°09.99'
 L-23, H-8

FISEL
 N26°23.05'
 W79°51.46'

VIRGINIA KEY
 117.1 VKZ
 Chan 118

BIMINI
 116.7 ZBV
 Chan 114

NOTE: Chart not to scale

(NARRATIVE ON FOLLOWING PAGE)

SE-3, 18 JUL 2019 to 15 AUG 2019

SE-3, 18 JUL 2019 to 15 AUG 2019