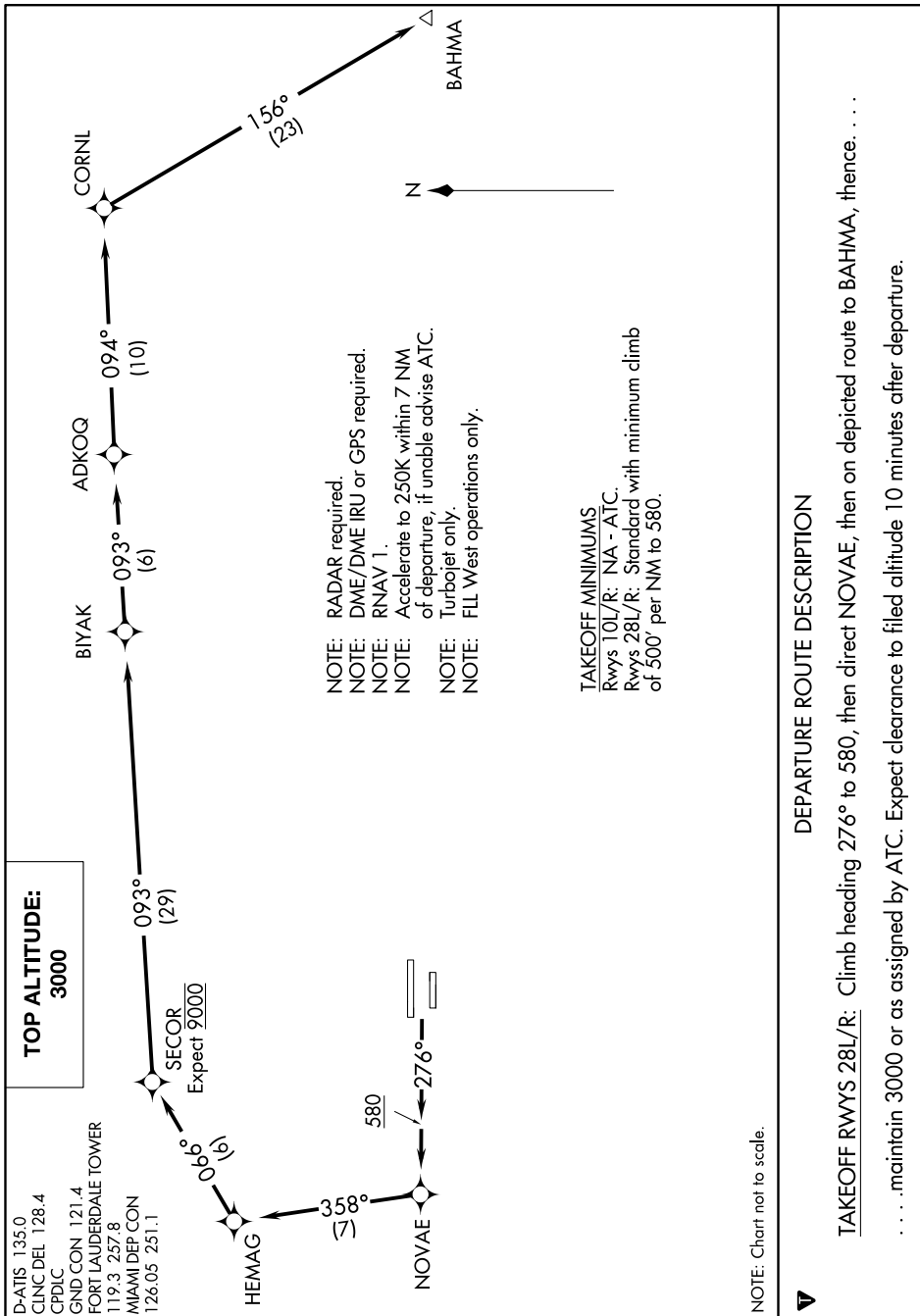


SE-3, 18 JUL 2019 to 15 AUG 2019



DEPARTURE ROUTE DESCRIPTION

TAKEOFF RWYS 28L/R: Climb heading 276° to 580, then direct NOVAE, then on depicted route to BAHMA, thence. maintain 3000 or as assigned by ATC. Expect clearance to filed altitude 10 minutes after departure.

SE-3, 18 JUL 2019 to 15 AUG 2019