

REDSTONE ARSENAL, ALABAMA

# VOR RWY 35

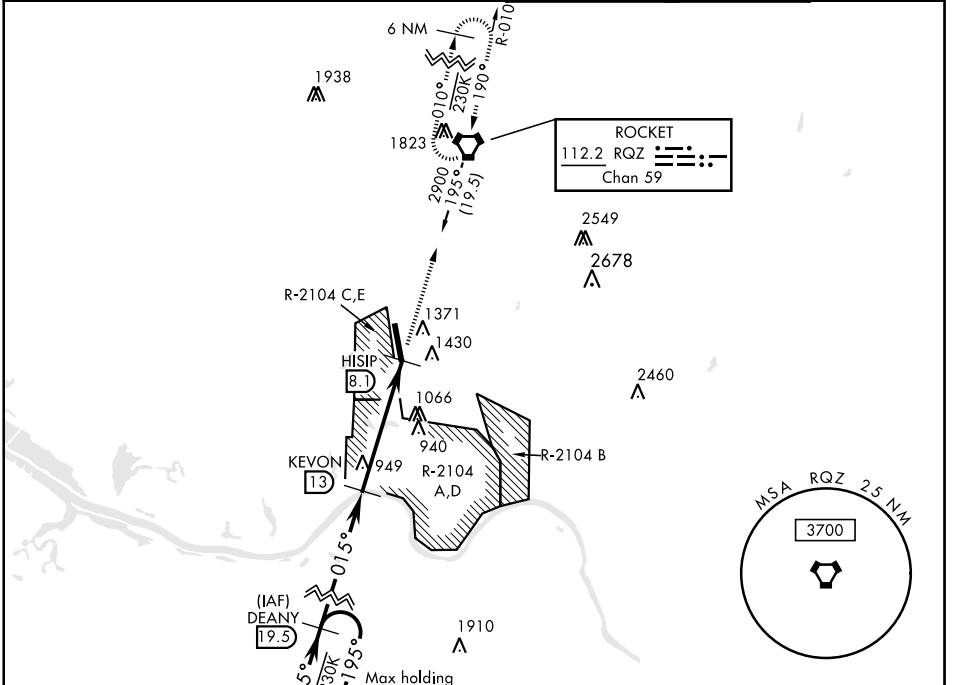
VORTAC RQZ <b>112.2</b> Chan <b>59</b>	APCH CRS <b>015°</b>	Rwy ldg TDZE Arprt Elev <b>7297</b> <b>661</b> <b>685</b>
--	-------------------------	--

AL-703 [USA]

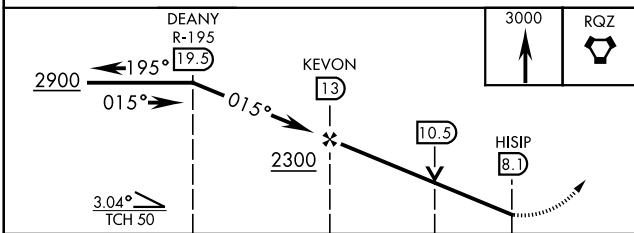
REDSTONE AAF (KHUA)

<b>∇</b> * Circling not authorized E of Rwy 17-35. <b>▲</b> High terrain and 1430' twr 1.7 NM E.	MISSED APPROACH: Climb to 3000 direct RQZ VORTAC and hold. Do not exceed 230 KIAS.
---	--

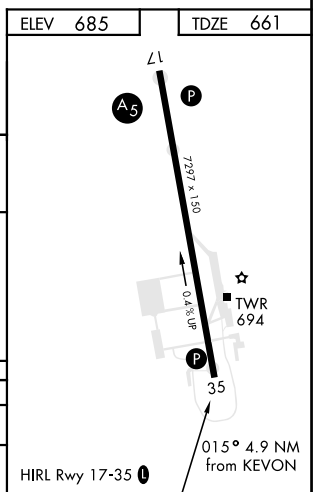
ATIS <b>120.65</b>	HUNTSVILLE APP CON <b>E 125.6 354.1 W 118.05 239.0</b>	REDSTONE TOWER ★ <b>126.95 (CTAF) 0 290.275</b>	PAR
-----------------------	---	--	-----



## DME REQUIRED



CATEGORY	A	B	C	D	E
S-35	1500-1 839 (900-1)	1500-1¼ 839 (900-1¼)	1500-2½	839	(900-2½)
<b>C</b> CIRCLING*	1500-1¼	815 (900-1¼)	1500-2½ 815 (900-2½)	1740-3	1055 (1100-3)



REDSTONE ARSENAL, ALABAMA

34° 41' N-86° 41' W

REDSTONE AAF (KHUA)

Amdt 9 28FEB19

# VOR RWY 35

SE-4, 18 JUL 2019 to 15 AUG 2019

SE-4, 18 JUL 2019 to 15 AUG 2019