

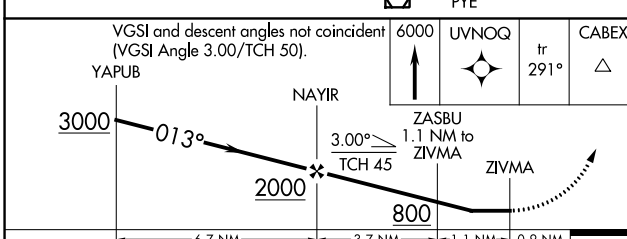
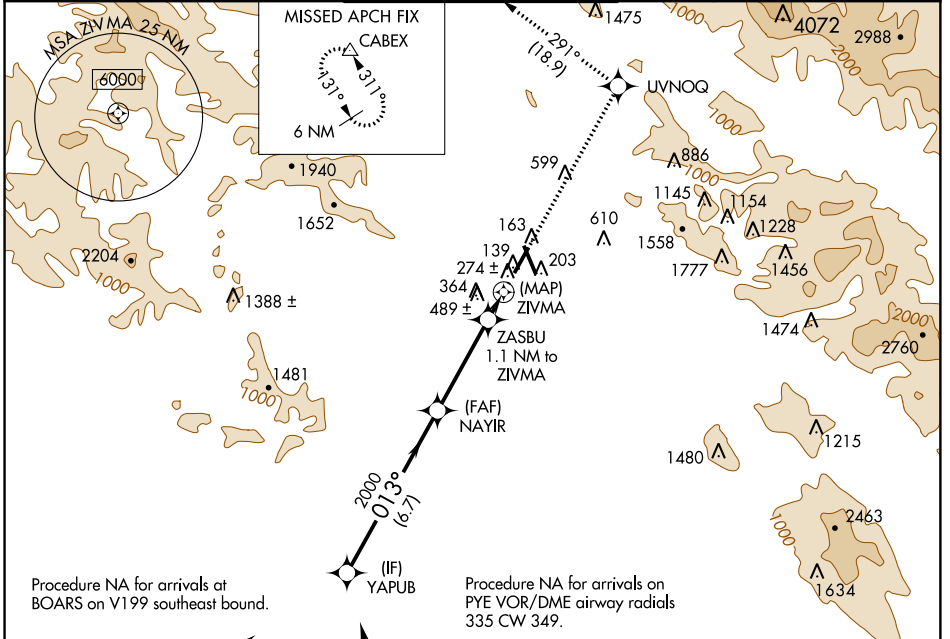
WAAS CH <b>69230</b> <b>W02A</b>	APP CRS <b>013°</b>	Rwy Idg TDZE <b>129</b> Apt Elev <b>129</b>	<b>4802</b>
--	------------------------	---	-------------

# RNAV (GPS) RWY 2

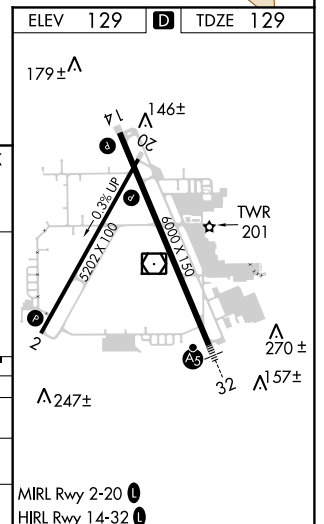
CHARLES M SCHULZ-SONOMA COUNTY (STS)

RNP APCH.	MISSED APPROACH: Climb to 6000 direct UVNOQ and on track 291° to CABEX and hold, continue climb-in-hold to 6000.
▼ ▲ Rwy 2 helicopter visibility reduction below ¾ SM NA.	

ATIS <b>120.55</b>	OAKLAND CENTER <b>127.8 353.5</b>	SANTA ROSA TOWER* <b>118.5 (CTAF) 0 363.0</b>	GND CON <b>121.9</b>	UNICOM <b>122.95</b>
-----------------------	--------------------------------------	--	-------------------------	-------------------------



CATEGORY	A	B	C	D
LP MDA	500-1 371 (400-1)			
LNAV MDA	660-1	531 (600-1)	660-1½	531 (600-1½)
CIRCLING	660-1 531 (600-1)	680-1 551 (600-1)	1080-3 951 (1000-3)	1420-3 1291 (1300-3)



SW-2, 18 JUL 2019 to 15 AUG 2019

SW-2, 18 JUL 2019 to 15 AUG 2019