

LOC/DME I-RDD 108.7 Chan 24	APP CRS 162°	Rwy Idg 7003 TDZE 505 Apt Elev 505
--	------------------------	---

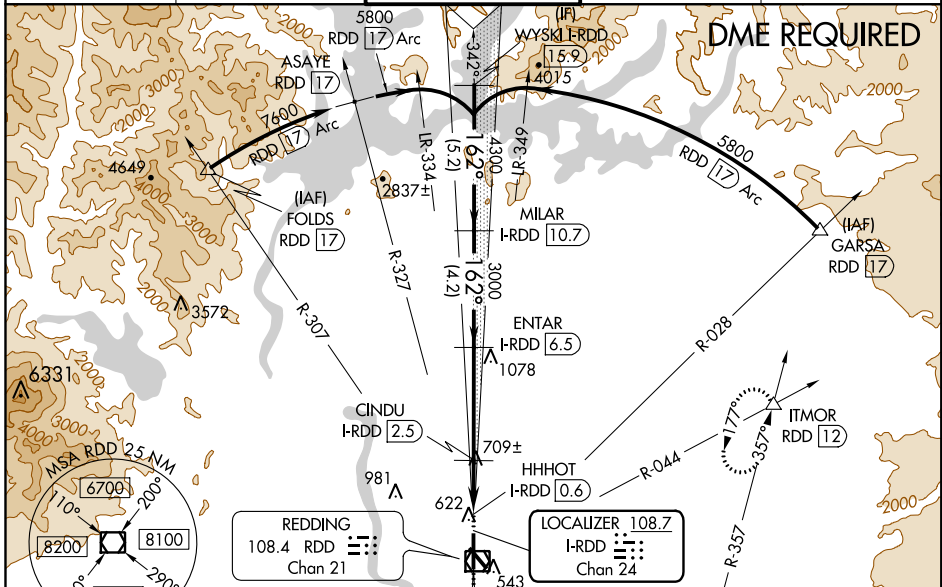
LOC/DME BC RWY 16

REDDING MUNI (RDD)

Visibility reduction by helicopters NA. When local altimeter setting not received, use Red Bluff altimeter setting and increase all MDA 80 feet and S-16 Cats C/D visibilities ¼ mile.

MISSED APPROACH: Climb to 1500 via I-RDD S course to COGOB/I-RDD 2.2 DME then climbing left turn to 5000 via heading 015° and RDD R-044 to ITMOR INT/RDD 12 DME and hold, continue climb-in-hold to 5000.

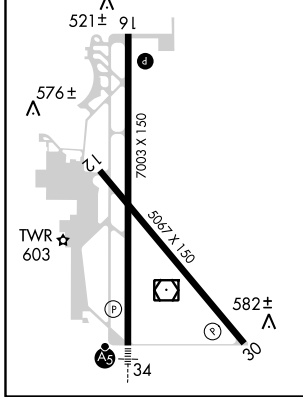
ATIS 124.1	OAKLAND CENTER 132.2 350.3	REDDING TOWER * 119.8(CTAF) 269.25	GND CON 121.7	UNICOM 122.95
----------------------	--------------------------------------	--	-------------------------	-------------------------



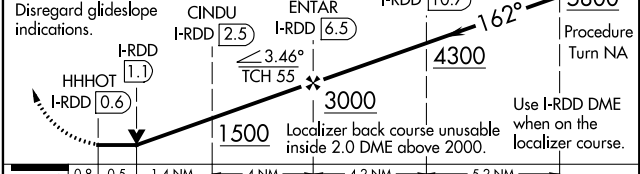
SW-2, 18 JUL 2019 to 15 AUG 2019

SW-2, 18 JUL 2019 to 15 AUG 2019

ELEV 505	D TDZE 505
162° 6.7 NM from FAF	REIL Rwy 16 1 MIRL Rwy 12-30 1 HIRL Rwy 16-34 1



1500 ↑ I-RDD S crs	COGOB I-RDD 2.2	5000 hdg 015°	RDD R-044	ITMOR △	VGSI and descent angles not coincident (VGSI Angle 3.00 / TCH 35).	WYSKI I-RDD 15.9
--------------------------	------------------------	------------------	-----------	----------------	--	-------------------------



	0.8	0.5	1.4 NM	4 NM	4.2 NM	5.2 NM	
CATEGORY	A		B		C		D
S-16	940-1		435 (500-1)		940-1¼ 435 (500-1¼)		940-1½ 435 (500-1½)
CIRCLING	960-1		455 (500-1)		980-1½ 475 (500-1½)		1060-2 555 (600-2)