

RNAV (GPS) RWY 29

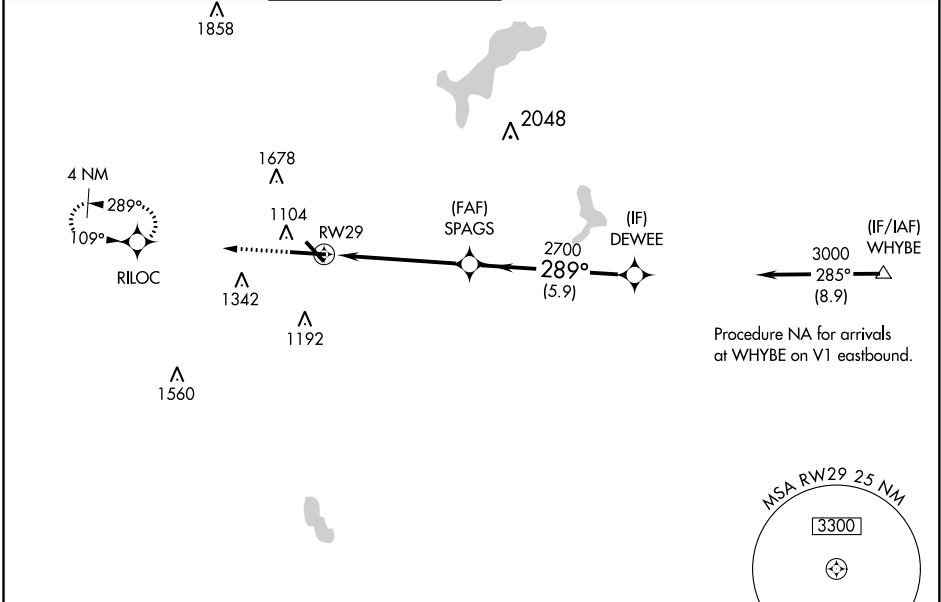
WORCESTER RGNL (ORH)

WAAS Ch 82299 W29A	APP CRS 289°	Rwy Idg TDZE Apt Elev	7001 990 1009
--	------------------------	-----------------------------	--

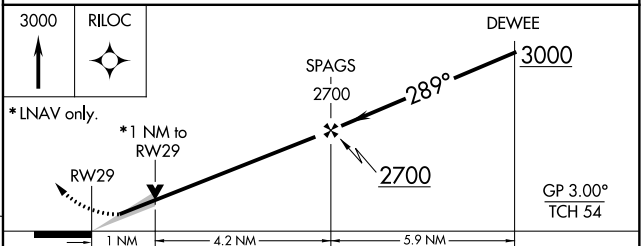
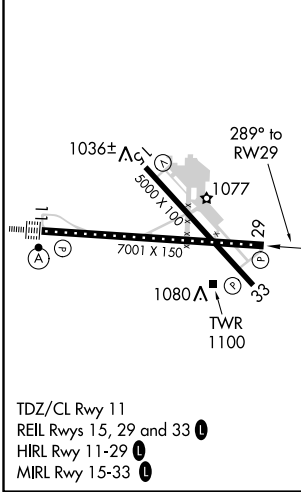
▽ For uncompensated Baro-VNAV systems, LNAV/VNAV NA below -20°C (-4°F) or above 54°C (130°F).
△ DME/DME RNP -0.3 NA.

MISSED APPROACH: Climb to 3000 direct RILOC and hold.

ATIS 126.55	YANKEE APP CON 119.0 327.1	WORCESTER TOWER★ 120.5 (CTAF) 0 263.0	GND CON 123.85	CLNC DEL 128.65 119.0 (when tower closed)	UNICOM 122.95
-----------------------	--------------------------------------	---	--------------------------	---	-------------------------



ELEV 1009	D	TDZE 990
-----------	----------	----------



CATEGORY	A	B	C	D
LPV DA		1190/50	200 (200-1)	
LNAV/VNAV DA		1261/50	271 (300-1)	
LNAV MDA		1360/55	370 (400-1)	
C CIRCLING	1560-1 551 (600-1)	1720-1 711 (800-1)	2000-3	991 (1000-3)

NE-1, 18 JUL 2019 to 15 AUG 2019

NE-1, 18 JUL 2019 to 15 AUG 2019