

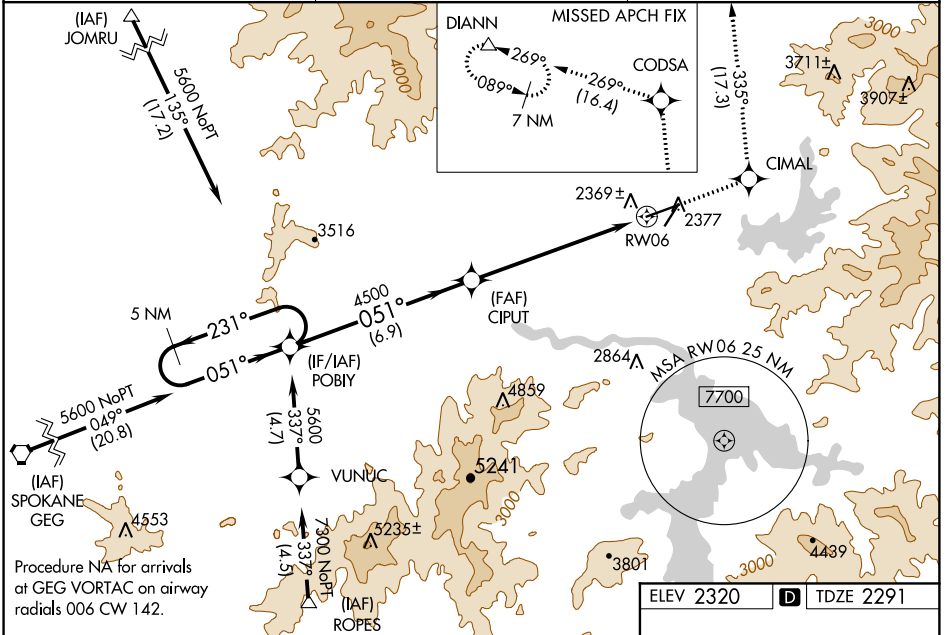
WAAS CH <b>70608</b> <b>W06A</b>	APP CRS <b>051°</b>	Rwy Idg <b>7400</b> TDZE <b>2291</b> Apt Elev <b>2320</b>
--	------------------------	---

# RNAV (GPS) RWY 6

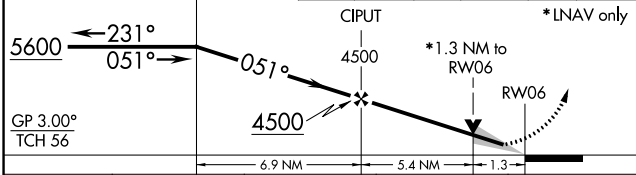
COEUR D'ALENE-PAPPY BOYINGTON FIELD (COE)

<p><b>⚠</b> For uncompensated Baro-VNAV systems, LNAV/VNAV NA below -21°C (-5°F) or above 53°C (127°F). DME/DME RNP-0.3 NA. When local altimeter setting not received, use Spokane Intl altimeter setting and increase all DA/MDA 80 feet. Increase LNAV/VNAV all Cats visibility ¼ mile, LNAV Cat C/D visibility ½ mile, and Circling Cat C visibility ¼ mile. Baro-VNAV and VDP NA when using Spokane Intl altimeter setting. Night landing: Rwy 2 NA.</p>	<p><b>MALSR</b></p>	<p><b>MISSED APPROACH:</b> Climb to 7000 direct CIMAL and on track 335° to CODSA and on track 269° to DIANN and hold.</p>
--	---------------------	---

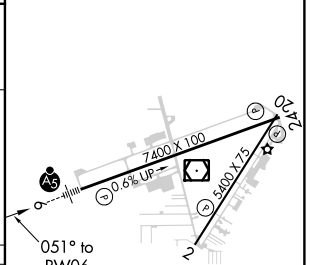
<b>AWOS-3PT</b> <b>135.075</b>	<b>SPOKANE APP CON</b> <b>132.1 263.0</b>	<b>UNICOM</b> <b>122.8 (CTAF)</b>
-----------------------------------	--	--------------------------------------



5 NM Holding Pattern POBIY	7000	CIMAL	tr 335°	CODSA	tr 269°	DIANN
----------------------------	------	-------	---------	-------	---------	-------



ELEV 2320	<b>D</b>	TDZE 2291
-----------	----------	-----------



CATEGORY	A	B	C	D
LPV DA	2491-½ 200 (200-½)			
LNAV/VNAV DA	2654-¾ 363 (400-¾)			
LNAV MDA	2740-½	449 (500-½)	2740-1	449 (500-1)
CIRCLING	2740-1 420 (500-1)	2860-1 540 (600-1)	2880-1½ 560 (600-1½)	2880-2 560 (600-2)

MIRL Rwy 2-20 **⚠**  
HIRL Rwy 6-24 **⚠**  
REIL Rws 2 and 24 **⚠**

NW-1, 18 JUL 2019 to 15 AUG 2019

NW-1, 18 JUL 2019 to 15 AUG 2019

# RNAV (GPS) RWY 6