

ILS or LOC/DME RWY 6

COEUR D'ALENE-PAPPY BOYINGTON FIELD (COE)

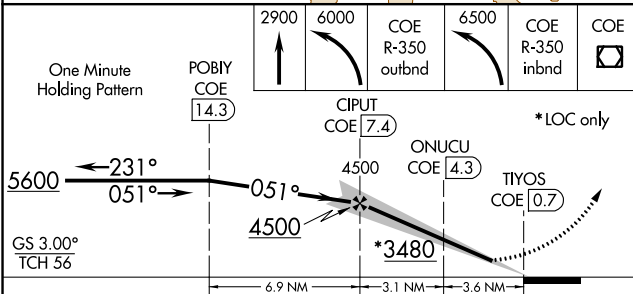
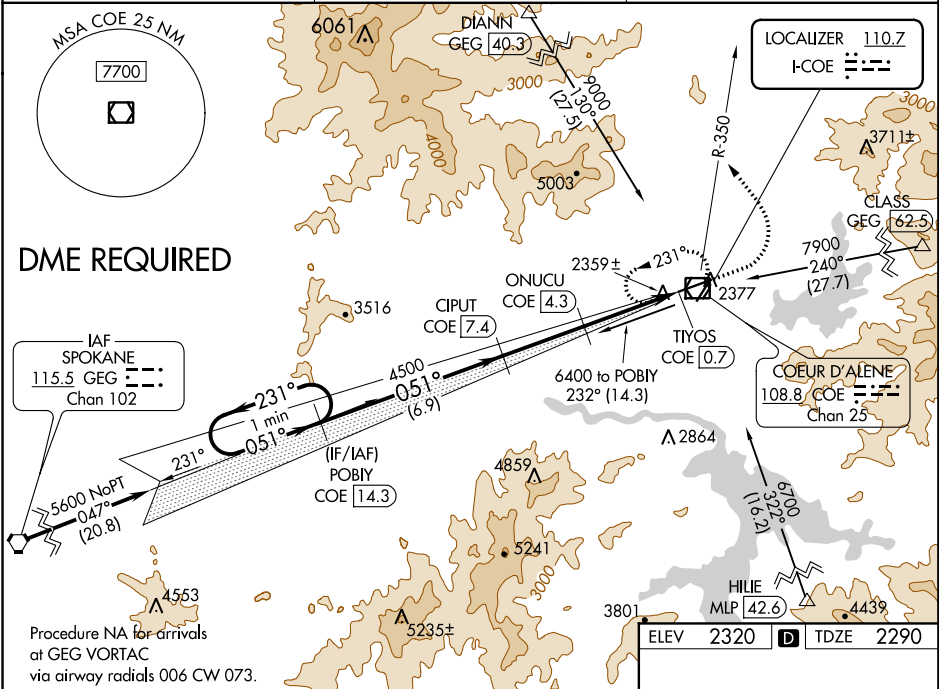
LOC I-COE 110.7	APP CRS 051°	Rwy Idg TDZE Apt Elev	7400 2290 2320
---------------------------	------------------------	-----------------------------	---

⚠ DME from COE VOR/DME. Simultaneous reception of I-COE and COE DME required. Autopilot coupled approach NA below 2840. When local altimeter setting not received, use Spokane Intl altimeter setting and increase all DA/MDA 80 feet and all visibilities ¼ mile. Circling Rwy 2, NA at night.

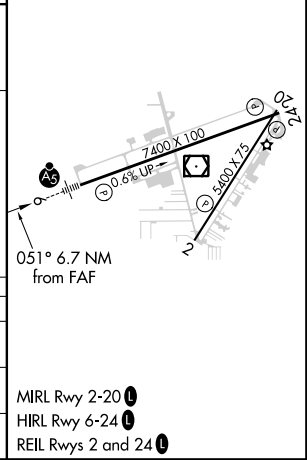


MISSED APPROACH: Climb to 2900 then climbing left turn to 6000 via COE R-350 outbound then climbing left turn to 6500 via COE R-350 inbound to COE VOR/DME and hold.

AWOS-3PT 135.075	SPOKANE APP CON 132.1 263.0	UNICOM 122.8 (CTAF)
----------------------------	---------------------------------------	-------------------------------



ELEV 2320	TDZE 2290
-----------	-----------



CATEGORY	A	B	C	D
S-ILS 6	2490-½ 200 (200-½)			
S-LOC 6	2860-½	570 (600-½)	2860-1 570 (600-1)	2860-1½ 570 (600-1¼)
CIRCLING	2860-1	540 (600-1)	2880-1½ 560 (600-1½)	2880-2 560 (600-2)

NW-1, 18 JUL 2019 to 15 AUG 2019

NW-1, 18 JUL 2019 to 15 AUG 2019