

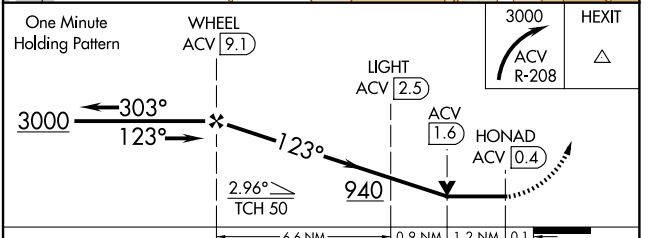
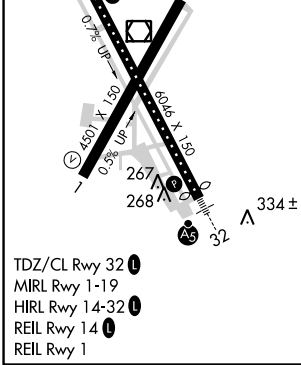
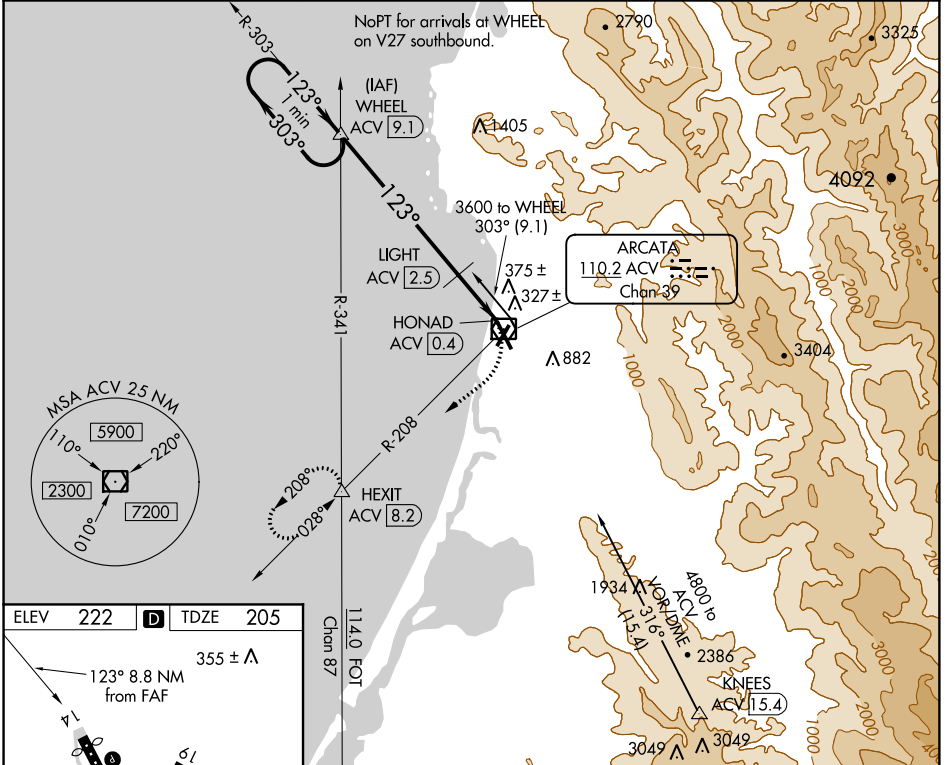
VOR/DME ACV 110.2 Chan 39	APP CRS 123°	Rwy Idg TDZE Apt Elev	5601 205 222
--	------------------------	-----------------------------	---

VOR RWY 14

CALIFORNIA REDWOOD COAST-HUMBOLDT COUNTY (ACV)

<p>DME required. Circling NA northeast of Rwy 14-32. Rwy 14 helicopter visibility reduction below $\frac{3}{4}$ SM NA.</p>	<p>MISSED APPROACH: Climbing right turn to 3000 on ACV R-208 to HEXIT INT/ 8.2 DME and hold, continue climb-in-hold to 3000.</p>
--	---

ASOS 118.525	SEATTLE CENTER 124.85 306.3	UNICOM 123.0 (CTAF)
------------------------	---------------------------------------	-------------------------------



CATEGORY	A	B	C	D
S-14	640/55	435 (500-1)	640-1¼	435 (500-1¼)
CIRCLING	640-1 418 (500-1)	680-1 458 (500-1)	840-1¾ 618 (700-1¾)	880-2 658 (700-2)

VOR RWY 14

SW-2, 18 JUL 2019 to 15 AUG 2019

SW-2, 18 JUL 2019 to 15 AUG 2019