

WAAS CH 62801 W14A	APP CRS 136°	Rwy Idg TDZE Apt Elev	5601 205 222
--	------------------------	-----------------------------	---

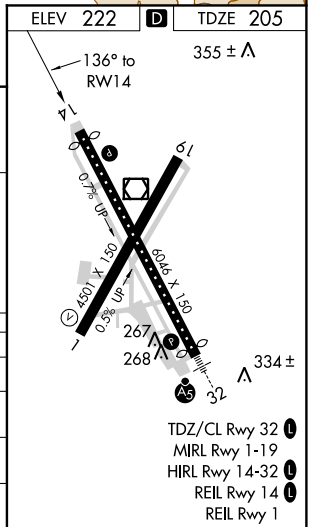
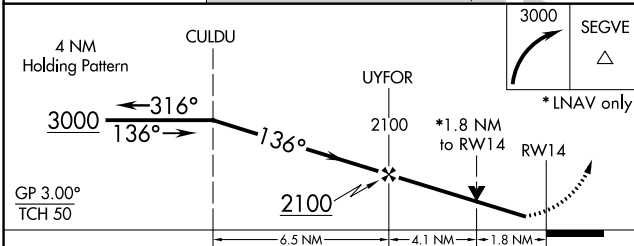
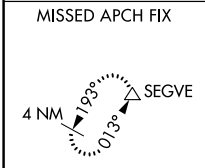
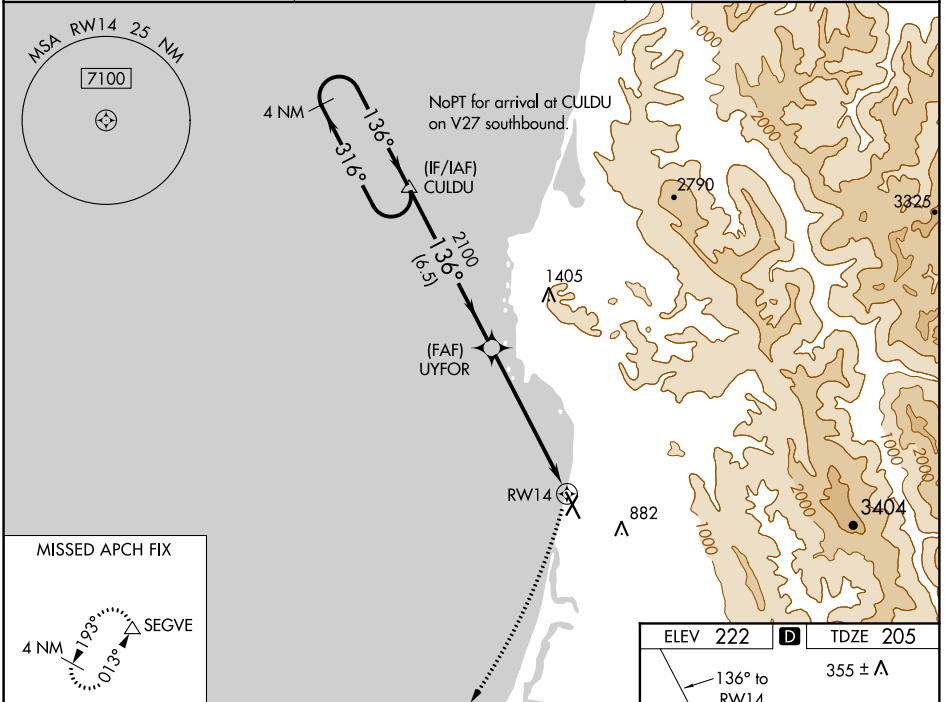
RNAV (GPS) RWY 14

CALIFORNIA REDWOOD COAST-HUMBOLDT COUNTY (ACV)

For uncompensated Baro-VNAV systems, LNAV/VNAV NA below -2°C (29°F) or above 54°C (130°F). Circling NA northeast of Rwy 14-32. DME/DME RNP-0.3 NA. Rwy 14 helicopter visibility reduction below 3/4 SM NA.

MISSED APPROACH:
Climbing right turn to 3000 direct SEGVE and hold.

ASOS 118.525	SEATTLE CENTER 124.85 306.3	UNICOM 123.0 (CTAF)
------------------------	---------------------------------------	-------------------------------



CATEGORY	A	B	C	D
LPV DA		455/45	250 (300-3/4)	
LNAV/VNAV DA		570-1 1/4	365 (400-1 1/4)	
LNAV MDA	820/55	615 (600-1)	820-1 3/4	615 (600-1 3/4)
C CIRCLING	820-1	598 (600-1)	840-1 3/4	880-2
			618 (700-1 3/4)	658 (700-2)

SW-2, 18 JUL 2019 to 15 AUG 2019

SW-2, 18 JUL 2019 to 15 AUG 2019