

WAAS CH 63200 W01A	APP CRS 013°	Rwy Idg TDZE Apt Elev	4501 204 222
---------------------------------	------------------------	-----------------------------	---

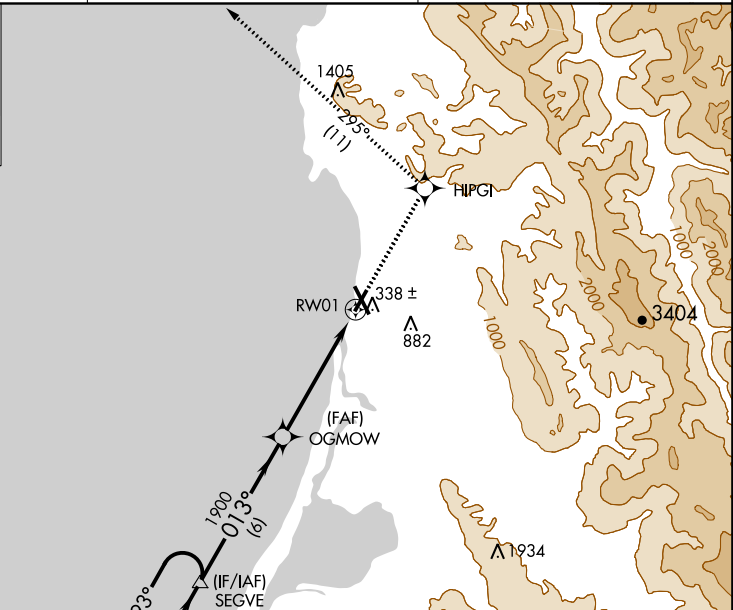
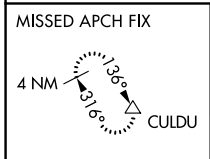
RNAV (GPS) RWY 1

CALIFORNIA REDWOOD COAST-HUMBOLDT COUNTY (ACV)

⚠ For uncompensated Baro-VNAV systems, LNAV/VNAV NA below -2°C (29°F) or above 54°C (130°F). Circling NA northeast of Rwy 14-32.
DME/DME RNP-0.3 NA.

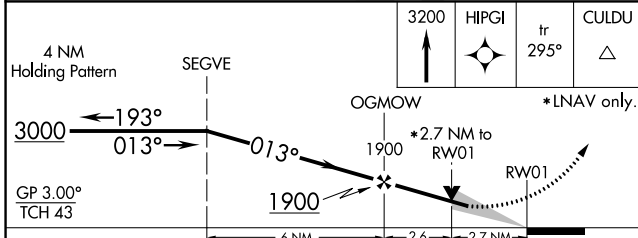
MISSED APPROACH: Climb to 3200 direct HIPGI and on track 295° to CULDU and hold.

ASOS 118.525	SEATTLE CENTER 124.85 306.3	UNICOM 123.0 (CTAF)
------------------------	---------------------------------------	-------------------------------



SW-2, 18 JUL 2019 to 15 AUG 2019

SW-2, 18 JUL 2019 to 15 AUG 2019



CATEGORY	A		B		C		D	
LPV DA			870-2½		666 (700-2½)			
LNAV/VNAV DA			838-2½		634 (700-2½)			
LNAV MDA	1080-1 876 (900-1)	1080-1¼ 876 (900-1¼)	1080-2½	876 (900-2½)				
C CIRCLING	1080-1¼	858 (900-1¼)	1080-2½	858 (900-2½)		1080-2¾ 858 (900-2¾)		

