

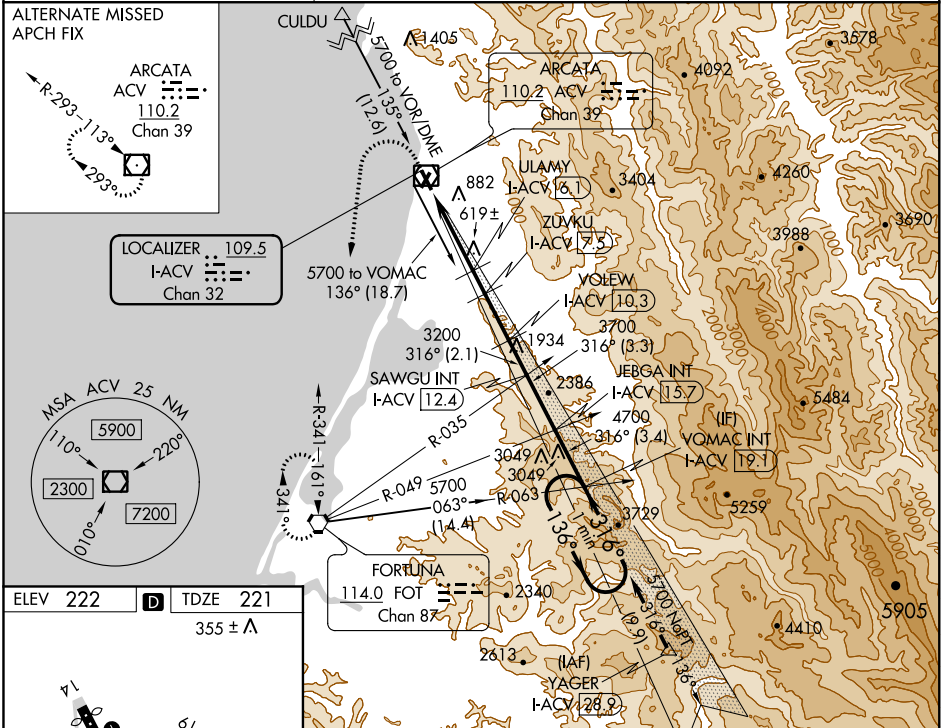
LOC/DME I-ACV 109.5 Chan 32	APP CRS 316°	Rwy Idg TDZE Apt Elev	5846 221 222
--	------------------------	-----------------------------	---

ILS or LOC RWY 32

CALIFORNIA REDWOOD COAST-HUMBOLDT COUNTY (ACV)

<p>NA</p> <p>Circling NA northeast of Rwy 14-32. DME required.</p>	<p>MALS R</p>	<p>MISSED APPROACH: Climb to 800 then climbing left turn to 3000 direct FOT VORTAC and hold.</p>
---	---------------	--

ASOS 118.525	SEATTLE CENTER 124.85 306.3	UNICOM 123.0 (CTAF) 0
------------------------	---------------------------------------	---------------------------------



SW-2, 18 JUL 2019 to 15 AUG 2019

SW-2, 18 JUL 2019 to 15 AUG 2019

ELEV 222	TDZE 221	355 ± A
----------	----------	---------

TDZ/CL Rwy 32
MIRL Rwy 1-19
HIRL Rwy 14-32
REIL Rwy 14
REIL Rwy 1

316°
9.2 NM
from FAF

800	3000	FOT	Use I-ACV DME when on the localizer course.	VOMAC I-ACV 19.1	One Minute Holding Pattern
*LOC only					
I-ACV 1.1	ULAMY I-ACV 6.1	ZUVKU I-ACV 7.5	VOLEW I-ACV 10.3	SAWGU I-ACV 12.4	JEBGA I-ACV 15.7
1860*	320*	3200	3700	4700	5700
VGS1 and ILS glidepath not coincident (VGS1 Angle 3.00/TCH 43).					
1.9	3.1 NM	1.4 NM	2.8 NM	2.1 NM	3.3 NM
CATEGORY A B C D					
S-ILS 32 441/18 220 (300-1/2)					
S-LOC 32 880/24 659 (700-1/2) 880-1 3/8 659 (700-1 3/8)					
CIRCLING 880-1 658 (700-1) 880-1 3/8 658 (700-1 3/8) 880-2 658 (700-2)					