

LOC I-GMX 111.55	APP CRS 238°	Rwy Idg 8016 TDZE 26 Apt Elev 32
----------------------------	------------------------	---

ILS Y or LOC RWY 24

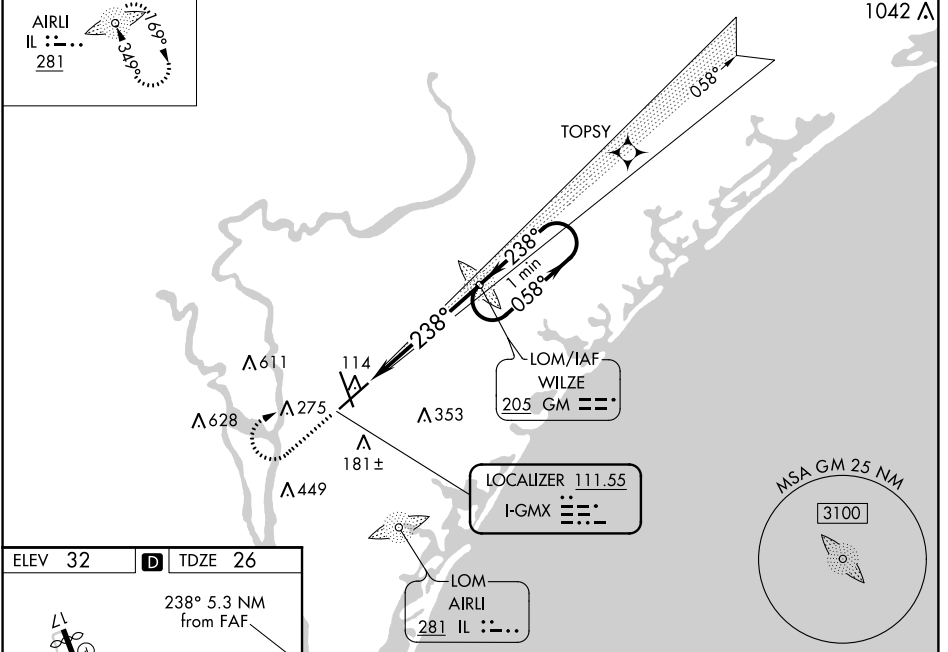
WILMINGTON INTL (ILM)

<p>**RVR 1800 authorized with use of FD or AP or HUD to DA. ADF required.</p>		<p>MALS R</p>	<p>MISSED APPROACH: Climb to 500 then climbing right turn to 1800 direct WILZE LOM and hold.</p>	
<p>ATIS 124.975</p>	<p>WILMINGTON APP CON * 118.25 284.65 (164°-343°) 135.75 317.425 (344°-163°)</p>	<p>WILMINGTON TOWER * 119.9(CTAF) 0 239.3</p>	<p>GND CON 121.9 348.6</p>	<p>UNICOM 122.95</p>

ALTERNATE MISSED APCH FIX

AIRLI
IL :::::
281

RNAV 1-GPS or RADAR REQUIRED



ELEV 32 TDZE 26

238° 5.3 NM from FAF

75K X 150

87

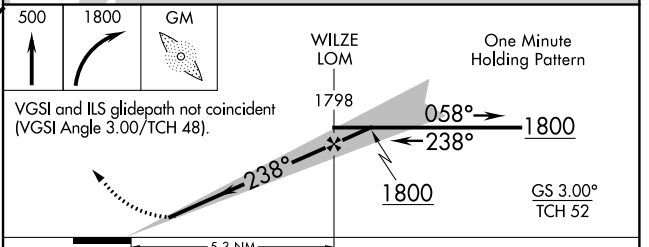
TWR 136

35

HIRL Rwy 17-35
HIRL Rwy 6-24
REIL Rwy 17
REIL Rwy 6

FAF to MAP 5.3 NM

Knots	60	90	120	150	180
Min:Sec	5:18	3:32	2:39	2:07	1:46



VGSI and ILS glidepath not coincident (VGSI Angle 3.00/TCH 48).	500	1800	GM	
CATEGORY	A	B	C	D
S-ILS 24**	226/24		200 (200-½)	
S-LOC 24	500/24	474 (500-½)	500/50	474 (500-1)
CIRCLING	560-1	528 (600-1)	720-2 688 (700-2)	920-3 888 (900-3)

SE-2: 18 JUL 2019 to 15 AUG 2019

SE-2: 18 JUL 2019 to 15 AUG 2019