

TACAN RWY 30

TACAN DWG Chan 2	APCH CRS 313°	Rwy Idg 11,987 THRE 49 Arprt Elev 84
---------------------	------------------	--

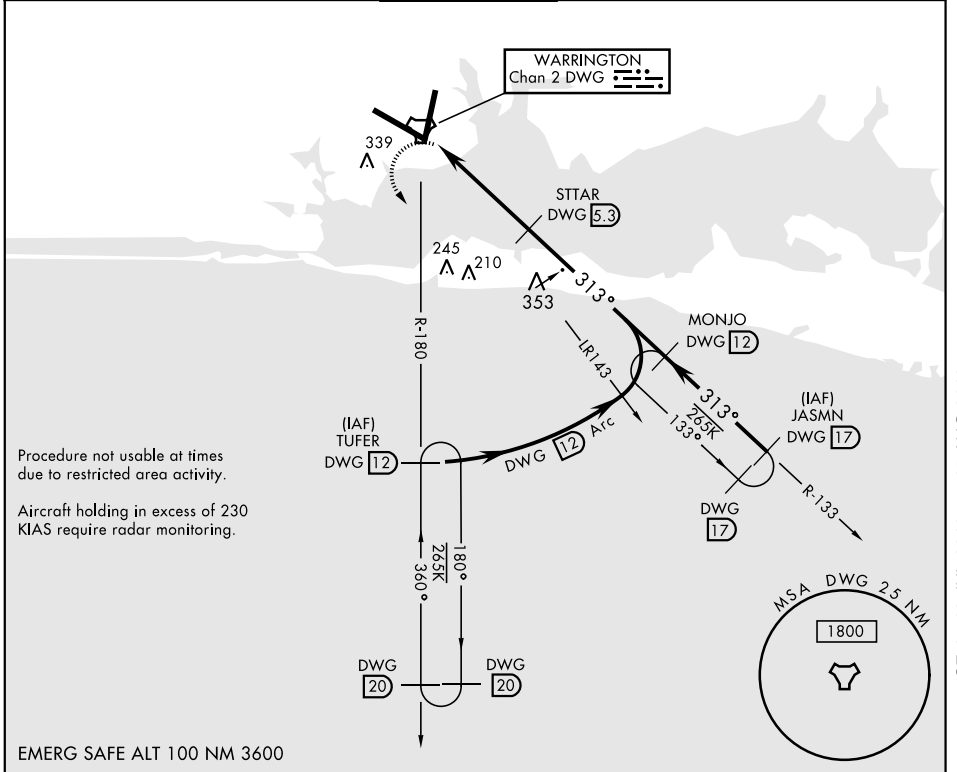
AL-436 [USAF] EGLIN AFB/DESTIN-FT WALTON BEACH (KVPS)

* When ALS inop, increase CAT AB RVR to 55 and vis to 1 mile, CAT CDE vis to 1½ miles.



MISSED APPROACH: Climbing left turn to 2200 direct DWG R-180/12 DME (TUFER) and hold.

ATIS* 134.625 273.5	EGLIN APP CON 125.1 281.45 271° 089° 132.1 360.6 090° 270°	EGLIN TOWER 118.2 353.65	GND CON 121.8 335.8	CLNC DEL 127.7 377.2
------------------------	--	-----------------------------	------------------------	-------------------------



Procedure not usable at times due to restricted area activity.

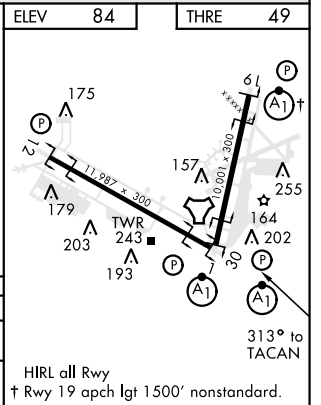
Aircraft holding in excess of 230 KIAS require radar monitoring.

EMERG SAFE ALT 100 NM 3600

SE-3, 18 JUL 2019 to 15 AUG 2019

SE-3, 18 JUL 2019 to 15 AUG 2019

2200 DWG R-180	TUFER R-180 (12)		JASMN R-133 (17)		
TACAN	RECCE (1.8)	STTAR (5.3)	MONJO (12)		
.5 NM		4.5 NM			
CATEGORY	A	B	C	D	E
S-30 *	520/24	471 (500-½)	520/50	471 (500-1)	
CIRCLING	660-1	576 (600-1)	760-2 676 (700-2)	760-2¼ 676 (700-2¼)	760-2½ 676 (700-2½)



HIRL all Rwy
† Rwy 19 apch lgt 1500' nonstandard.

TACAN RWY 30