

VALPARAISO, FLORIDA

TACAN RWY 19

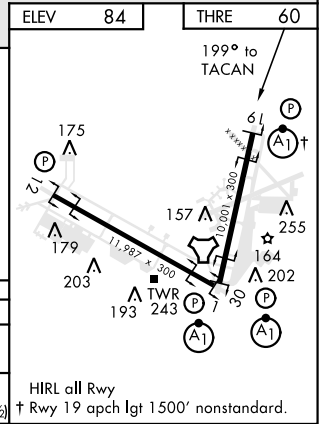
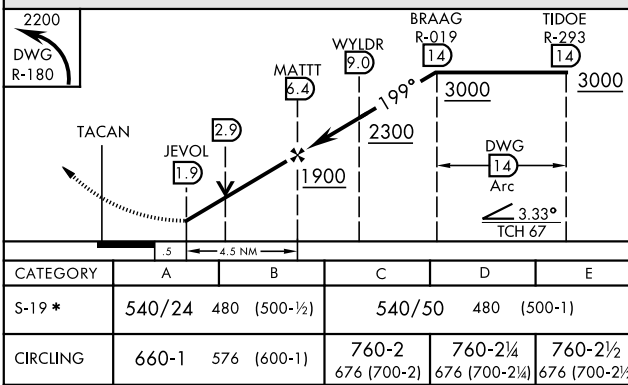
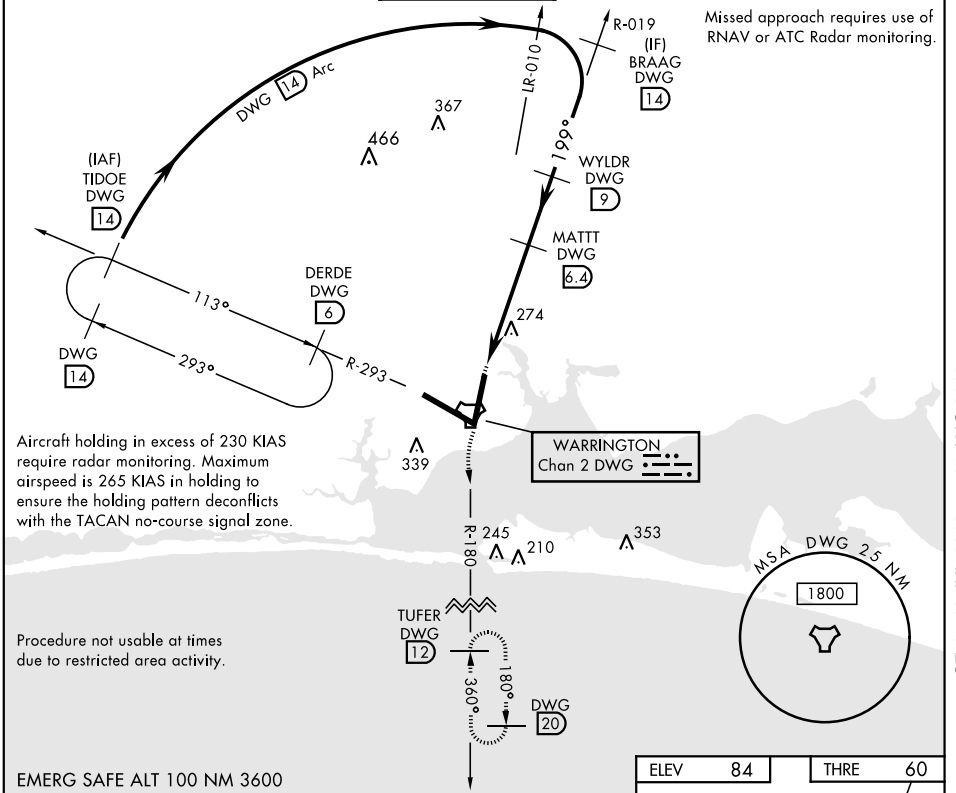
TACAN DWG Chan 2	APCH CRS 199°	Rwy ldg 10,001 THRE 60 Arprt Elev 84
----------------------------	-------------------------	---

AL-436 [USAF] EGLIN AFB/DESTIN-FT WALTON BEACH (KVPS)

* When ALS inop, increase CAT AB RVR to 55 and vis to 1 mile, CAT CDE vis to 1 3/8 miles.

ALSF-1
MISSED APPROACH: Climbing left turn to 2200 direct DWG TACAN R-180/12 DME (TUFER) and hold.

ATIS * 134.625 273.5	EGLIN APP CON 125.1 281.45 271°-089° 132.1 360.6 090°-270°	EGLIN TOWER 118.2 353.65	GND CON 121.8 335.8	CLNC DEL 127.7 377.2
--------------------------------	--	------------------------------------	-------------------------------	--------------------------------



SE-3, 18 JUL 2019 to 15 AUG 2019

SE-3, 18 JUL 2019 to 15 AUG 2019

VALPARAISO, FLORIDA
Amdt 2 27JUN13

30°29'N-86°32'W

EGLIN AFB/DESTIN-FT WALTON BEACH (KVPS)

TACAN RWY 19