

VALPARAISO, FLORIDA

# TACAN RWY 1

TACAN DWG Chan 2	APCH CRS 360°	Rwy ldg THRE 48 Arprt Elev 84
---------------------	------------------	-------------------------------------

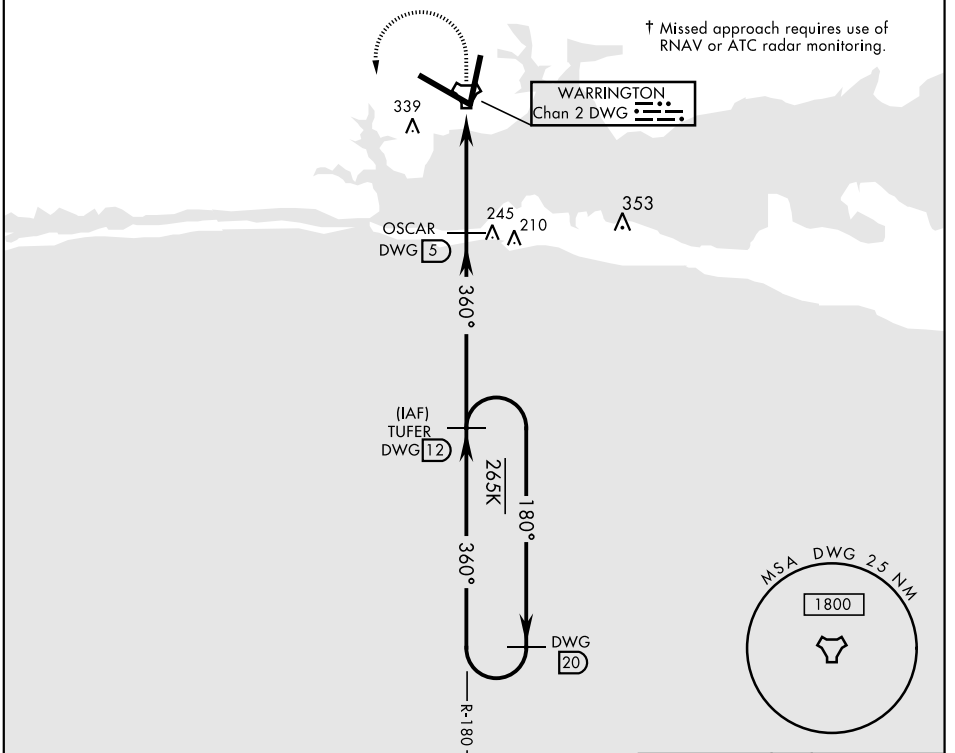
AL-436 [USAF] EGLIN AFB/DESTIN-FT WALTON BEACH (KVPS)

\* When ALS inop, increase CAT AB RVR to 55, vis to 1 mile, CAT CDE vis to 1 3/8 miles.



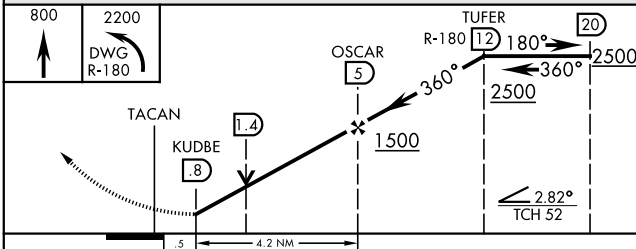
† MISSED APPROACH: Climb to 800 then climbing left turn to 2200 direct DWG R-180/12 DME (TUFER) and hold.

ATIS * 134.625 273.5	EGLIN APP CON 125.1 281.45 271°-089° 132.1 360.6 090°-270°	EGLIN TOWER 118.2 353.65	GND CON 121.8 335.8	CLNC DEL 127.7 377.2
-------------------------	------------------------------------------------------------------	-----------------------------	------------------------	-------------------------

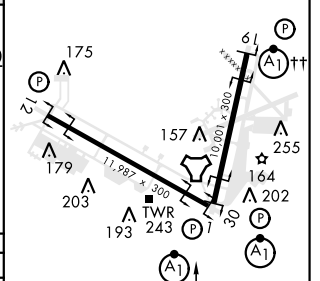


† Missed approach requires use of RNAV or ATC radar monitoring.

EMERG SAFE ALT 100 NM 3600



ELEV 84	THRE 48
---------	---------



CATEGORY	A	B	C	D	E
S-1 *	540/24	492 (500-1/2)	540/50	492 (500-1)	
CIRCLING	660-1	576 (600-1)	760-2 676 (700-2)	760-2 1/4 676 (700-2 1/4)	760-2 1/2 676 (700-2 1/2)

HIRL all Rwy  
†† Rwy 19 apch lgt  
1500' nonstandard.

VALPARAISO, FLORIDA  
Amdt 1 26MAY16

30°29'N-86°32'W

EGLIN AFB/DESTIN-FT WALTON BEACH (KVPS)

# TACAN RWY 1

SE-3, 18 JUL 2019 to 15 AUG 2019

SE-3, 18 JUL 2019 to 15 AUG 2019