

VALPARAISO, FLORIDA

RNAV (GPS) RWY 30

APCH CRS	Rwy ldg	11,987
300°	THRE	49
	Arpt Elev	84

AL-436 [USAF]

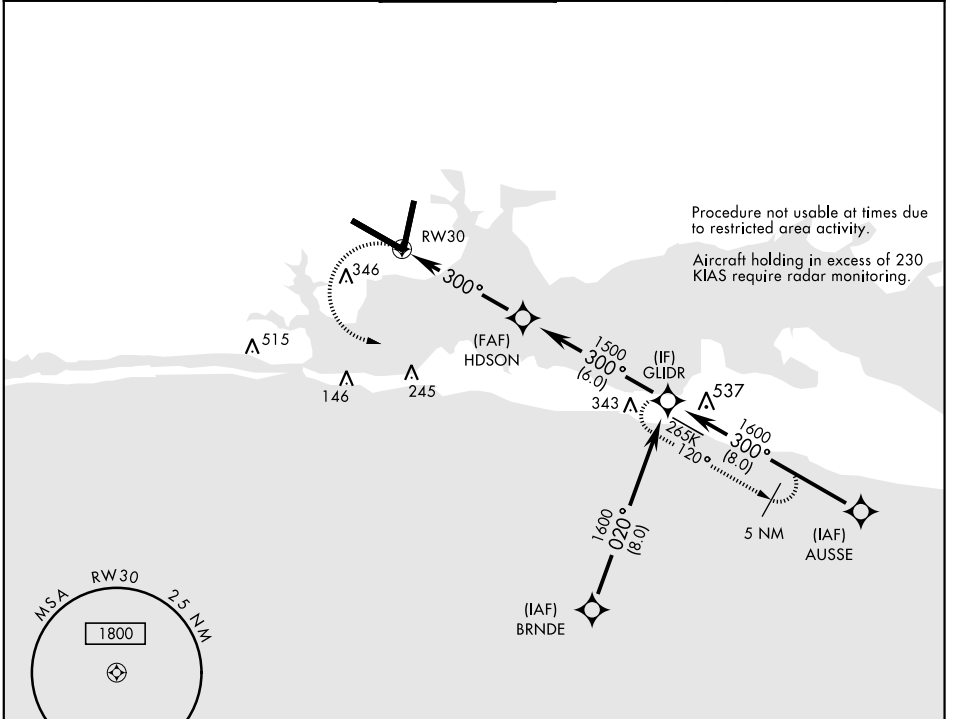
EGLIN AFB/DESTIN-FT WALTON BEACH (KVPS)

* When ALS inop, increase CAT AB RVR to 55 and vis to 1 mile,
 CAT CDE vis to 1 3/8 miles.
 DME/DME RNP-0.3 NA



MISSED APPROACH: Climbing left turn to
 2000 to GLDR and hold.

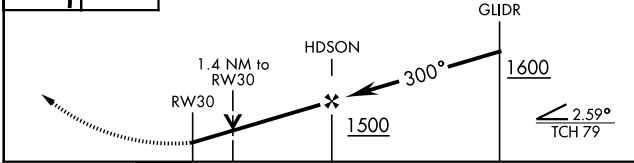
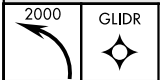
ATIS *	EGLIN APP CON	EGLIN TOWER	GND CON	CLNC DEL
134.625 273.5	125.1 281.45 271°-089° 132.1 360.6 090°-270°	118.2 353.65	121.8 335.8	127.7 377.2



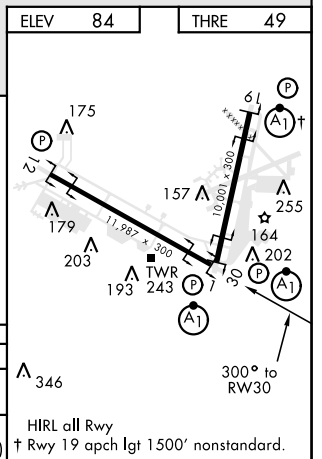
SE-3, 18 JUL 2019 to 15 AUG 2019

SE-3, 18 JUL 2019 to 15 AUG 2019

EMERG SAFE ALT 100 NM 3600



CATEGORY	A	B	C	D	E
RNAV MDA *	500/24	451 (500-1/2)	500/45	451 (500-7/8)	
CIRCLING	600-1	516 (600-1)	760-2 676 (700-2)	760-2 1/4 676 (700-2 1/4)	760-2 1/2 676 (700-2 1/2)



VALPARAISO, FLORIDA

30° 29' N-86° 32' W

EGLIN AFB/DESTIN-FT WALTON BEACH (KVPS)

Amdt 1 30MAY13

RNAV (GPS) RWY 30