

VALPARAISO, FLORIDA

RNAV (GPS) RWY 19

APCH CRS 192°	Rwy ldg 10,001
THRE 60	Arprt Elev 84

AL-436 [USAF] EGLIN AFB/DESTIN-FT WALTON BEACH (KVPS)

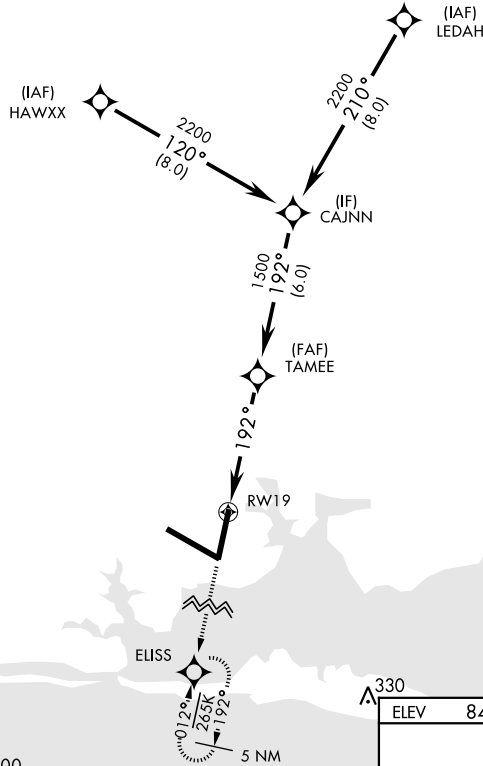
* When ALS inop, increase CAT AB RVR to 55 and vis to 1 mile, CAT CDE vis to 1 3/8 miles.
DME/DME RNP-0.3 NA



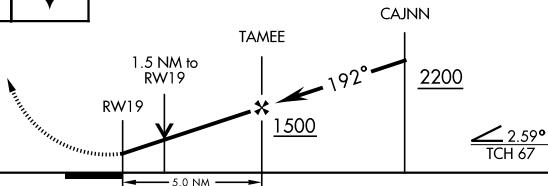
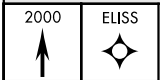
MISSED APPROACH: Climb straight ahead to 2000 to ELISS and hold.

ATIS * 134.625 273.5	EGLIN APP CON 125.1 281.45 271°-089° 132.1 360.6 090°-270°	EGLIN TOWER 118.2 353.65	GND CON 121.8 335.8	CLNC DEL 127.7 377.2
--------------------------------	--	------------------------------------	-------------------------------	--------------------------------

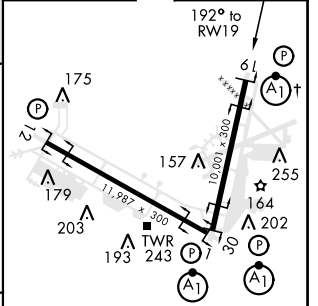
Procedure not usable at times due to restricted area activity.



EMERG SAFE ALT 100 NM 3600



ELEV 84	THRE 60
---------	---------



CATEGORY	A	B	C	D	E
RNAV MDA *	540/24	480 (500-1/2)	540/50	480	(500-1)
CIRCLING	600-1	516 (600-1)	760-2 676 (700-2)	760-2 1/4 676 (700-2 1/4)	760-2 1/2 676 (700-2 1/2)

HIRL all Rwy
† Rwy 19 apch lgt 1500' nonstandard.

SE-3, 18 JUL 2019 to 15 AUG 2019

SE-3, 18 JUL 2019 to 15 AUG 2019

VALPARAISO, FLORIDA

30°29'N-86°32'W

EGLIN AFB/DESTIN-FT WALTON BEACH (KVPS)

Amdt 1 30MAY13

RNAV (GPS) RWY 19