

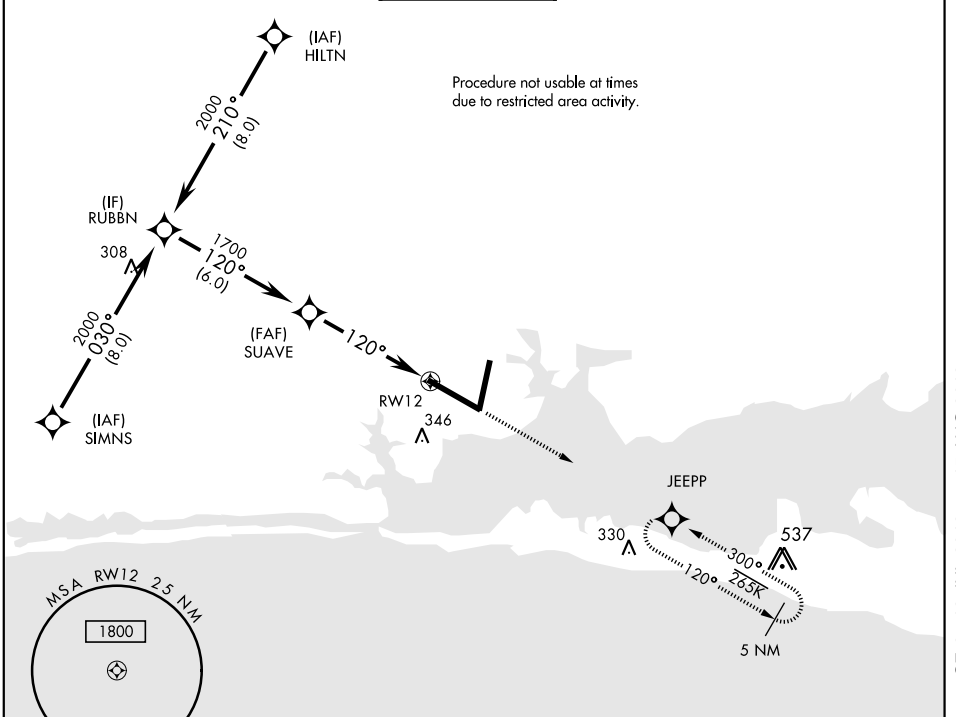
VALPARAISO, FLORIDA

RNAV (GPS) RWY 12

APCH CRS 120°	Rwy Idg 11,987
	THRE 84
	Arpt Elev 84

AL-436 [USAF] EGLIN AFB/DESTIN-FT WALTON BEACH(KVPS)

DME/DME RNP-0.3 NA		MISSED APPROACH: Climb straight ahead to 1600 to JEEPP and hold.		
ATIS ★ 134.625 273.5	EGLIN APP CON 125.1 281.45 271°-089° 132.1 360.6 090°-270°	EGLIN TOWER 118.2 353.65	GND CON 121.8 335.8	CLNC DEL 127.7 377.2



SE-3, 18 JUL 2019 to 15 AUG 2019

SE-3, 18 JUL 2019 to 15 AUG 2019

ELEV 84	THRE 84
---------	---------

CATEGORY	A	B	C	D	E
LNAV MDA	540/55	456 (500-1)	540-1 $\frac{3}{8}$	456	(500-1 $\frac{3}{8}$)
CIRCLING	600-1	516 (600-1)	760-2 676 (700-2)	760-2 $\frac{1}{4}$ 676 (700-2 $\frac{1}{4}$)	760-2 $\frac{1}{2}$ 676 (700-2 $\frac{1}{2}$)

EMERG SAFE ALT 100 NM 3600

HIRL all Rwy
† Rwy 19 apch lgt 1500' nonstandard.

VALPARAISO, FLORIDA
Amdt 1 30MAY13

30°29'N-86°32'W EGLIN AFB/DESTIN-FT WALTON BEACH (KVPS)

RNAV (GPS) RWY 12