

ILS Z or LOC Z RWY 30

LOC I-VPS 109.1	APCH CRS 300°	Rwy ldg 11,987 THRE 49 Arpt Elev 84
---------------------------	-------------------------	--

AL-436 [USAF]

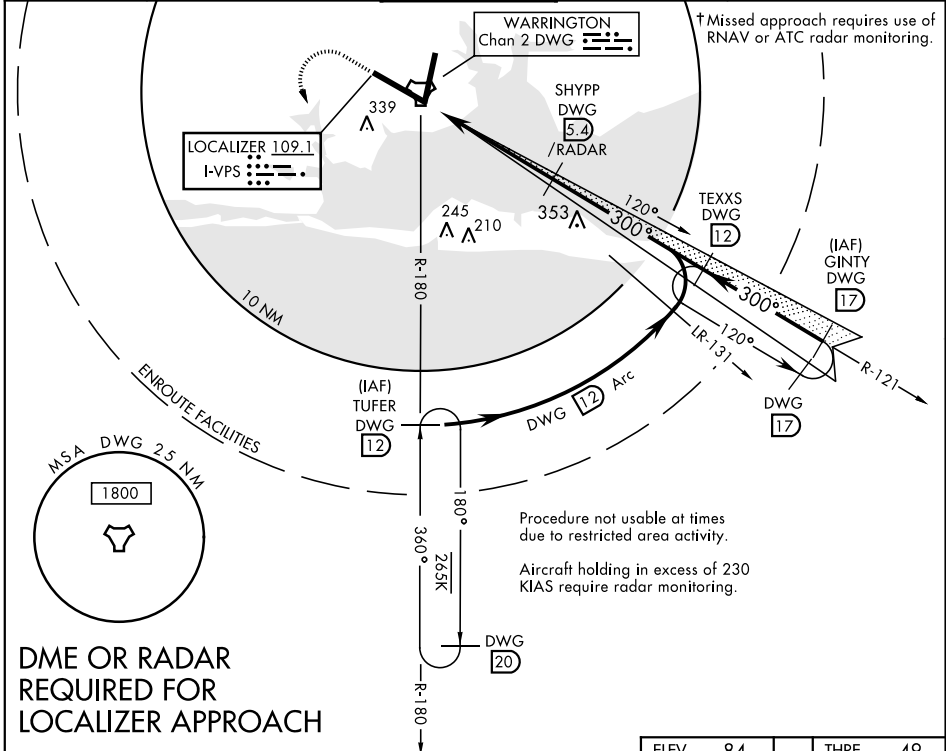
EGLIN AFB/DESTIN-FT WALTON BEACH(KVPS)

*When ALS inop, increase RVR to 40 and vis to 3/4 mile.
 **When ALS inop, increase CAT AB RVR to 55 and vis to 1 mile, CAT CDE RVR to 60 and vis to 1 1/8 miles.



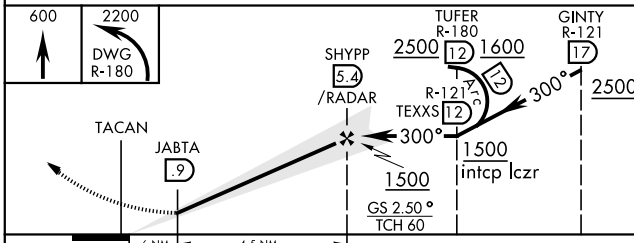
† MISSED APPROACH: Climb straight ahead to 600 then climbing left turn to 2200 direct TUFER DWG R-180/12 DME and hold.

ATIS * 134.625 273.5	EGLIN APP CON 125.1 281.45 271° 089° 132.1 360.6 090° 270°	EGLIN TOWER 118.2 353.65	GND CON 121.8 335.8	CLNC DEL 127.7 377.2
--------------------------------	--	------------------------------------	-------------------------------	--------------------------------

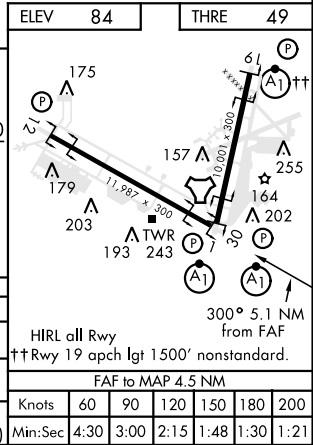


DME OR RADAR REQUIRED FOR LOCALIZER APPROACH

EMERG SAFE ALT 100 NM 3600



CATEGORY	A	B	C	D	E
S-ILS 30 *	249/24		200	(200-1/2)	
S-LOC 30 **	440/24	391 (400-1/2)	440/35	391 (400-3/8)	
CIRCLING	660-1	576 (600-1)	760-2 676 (700-2)	760-2 1/4 676 (700-2 1/4)	760-2 1/2 676 (700-2 1/2)



ILS Z or LOC Z RWY 30

SE-3, 18 JUL 2019 to 15 AUG 2019

SE-3, 18 JUL 2019 to 15 AUG 2019