

VALPARAISO, FLORIDA

ILS Y or LOC Y RWY 30

LOC I-VPS 109.1 Chan 28	APCH CRS 300°	Rwy ldg 11,987 THRE 49 Arpt Elev 84
---	-------------------------	--

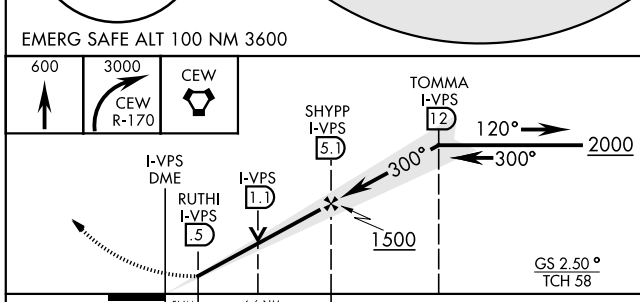
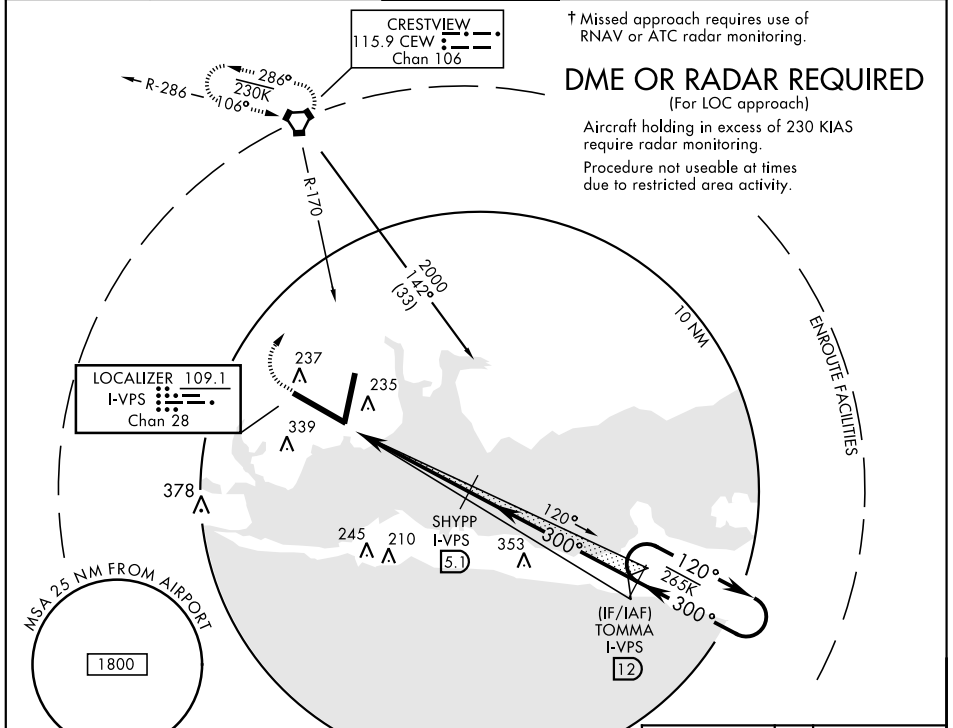
AL-436 [USAF] EGLIN AFB/DESTIN-FT WALTON BEACH(KVPS)

* When ALS inop, increase RVR to 40 and vis to 3/4 mile.
 ** When ALS inop, increase RVR to 55, vis to 1 mile.

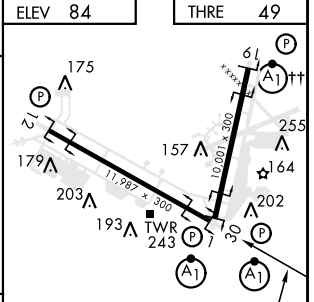
ALS-F1

† MISSED APPROACH: Climb straight ahead to 600, then climbing right turn to 3000, intercept CEW VORTAC R-170 to CEW and hold.

ATIS * 134.625 273.5	EGLIN APP CON 125.1 281.45 271°-089° 132.1 360.6 090°-270°	EGLIN TOWER 118.2 353.65	GND CON 121.8 335.8	CLNC DEL 127.7 377.2
--------------------------------	--	------------------------------------	-------------------------------	--------------------------------



CATEGORY	A	B	C	D	E
S-ILS 30*	249/24		200	(200-1/2)	
S-LOC 30**	420/24	371 (400-1/2)	420/35	371 (400-3/4)	
CIRCLING	660-1	576 (600-1)	760-2 676 (700-2)	760-2 1/4 676 (700-2 1/4)	760-2 1/2 676 (700-2 1/2)



HIRL all Rwy
 †† Rwy 19 apch lgt 1500' nonstandard.

FAF to MAP 4.6 NM

Knots	60	90	120	150	180
Min:Sec	4:36	3:04	2:18	1:50	1:32

VALPARAISO, FLORIDA
 Orig 26MAY16

30° 29' N-86° 32' W

EGLIN AFB/DESTIN-FT WALTON BEACH(KVPS)

ILS Y or LOC Y RWY 30

SE-3, 18 JUL 2019 to 15 AUG 2019

SE-3, 18 JUL 2019 to 15 AUG 2019