

VALPARAISO, FLORIDA

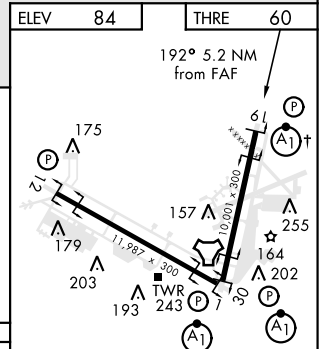
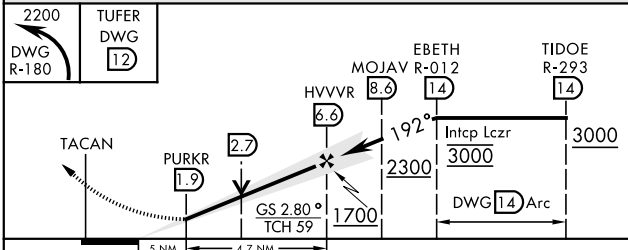
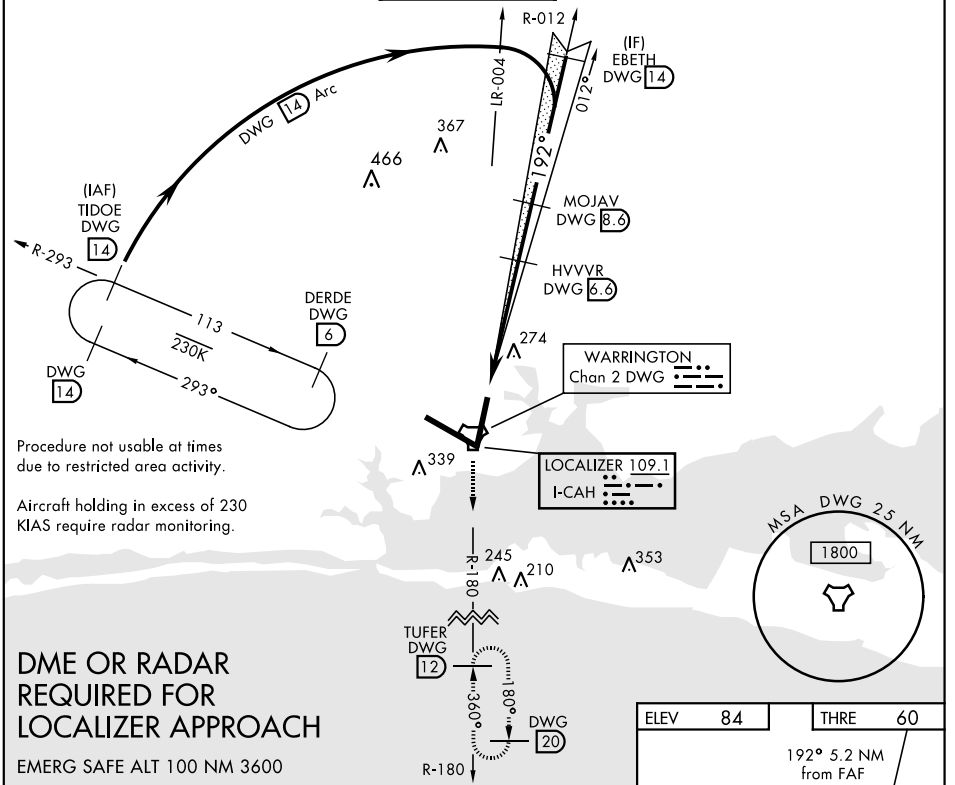
ILS X or LOC X RWY 19

LOC I-CAH 109.1	APCH CRS 192°	Rwy ldg THRE Arprt Elev 10,001 60 84
---------------------------	-------------------------	--

AL-436 [USAF] EGLIN AFB/DESTIN-FT WALTON BEACH (KVPS)

* When ALS inop, increase CAT ABCDE RVR to 40 and vis to 3/4 mile. ** When ALS inop, increase CAT AB RVR to 55 and vis 1 mile, CAT CDE RVR to 60 and vis to 1 1/8 miles.	ALSF-1 	MISSED APPROACH: Climb to 2200 on DWG R-180 to 12 DME/TUFER and hold.
---	------------	---

ATIS * 134.625 273.5	EGLIN APP CON 125.1 281.45 271°-089° 132.1 360.6 090°-270°	EGLIN TOWER 118.2 353.65	GND CON 121.8 335.8	CLNC DEL 127.7 377.2
--------------------------------	--	------------------------------------	-------------------------------	--------------------------------



CATEGORY	A	B	C	D	E
S-ILS 19 *	260/24		200	(200-1/2)	
S-LOC 19 **	480/24	420 (400-1/2)	480/40	420 (400-3/4)	
CIRCLING	660-1	576 (600-1)	760-2 676 (700-2)	760-2 1/4 676 (700-2 1/4)	760-2 1/2 676 (700-2 1/2)

HIRL all Rwy † Rwy 19 apch lgt 1500' nonstandard.					
LOC FAF to MAP 4.7 NM					
Knots	60	90	120	150	180
Min:Sec	4:42	3:08	2:21	1:53	1:34

VALPARAISO, FLORIDA
Amdt 4 17OCT13

30°29'N-86°32'W

EGLIN AFB/DESTIN-FT WALTON BEACH (KVPS)

ILS X or LOC X RWY 19

SE-3, 18 JUL 2019 to 15 AUG 2019

SE-3, 18 JUL 2019 to 15 AUG 2019