

VALPARAISO, FLORIDA

ILS W or LOC W RWY 19

LOC/DME I-CAH 109.1 Chan 28	APCH CRS 192°	Rwy ldg 10,001 THRE 60 Arpt Elev 84
---	-------------------------	--

AL-436 [USAF]

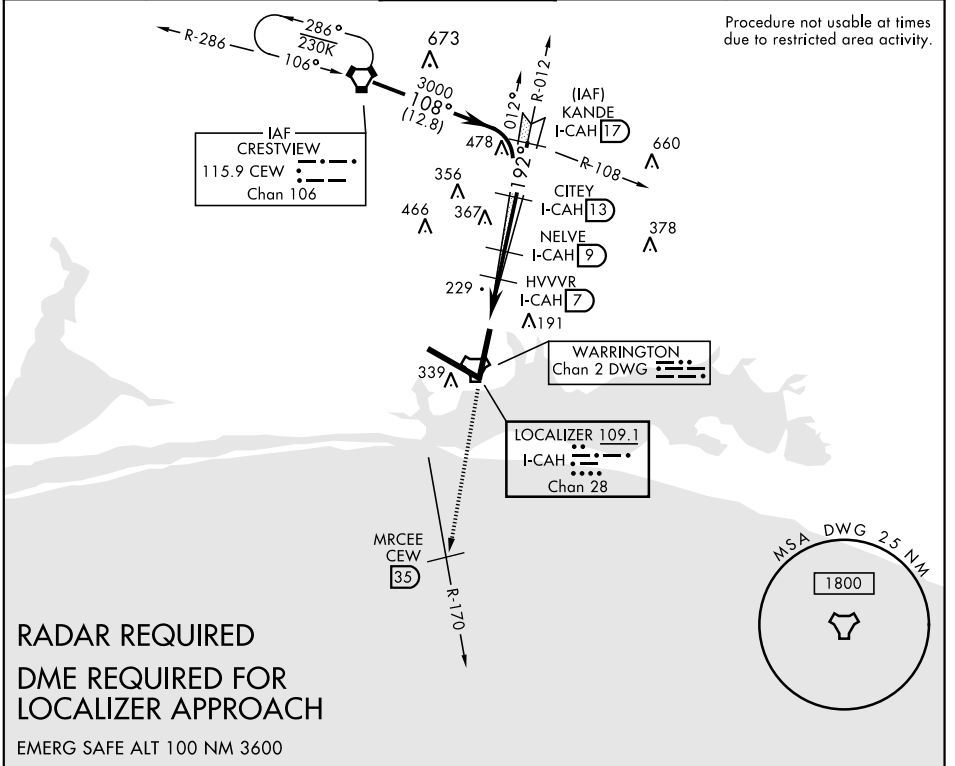
EGLIN AFB/DESTIN-FT WALTON BEACH (KVPS)

* When ALS inop, increase CAT ABCDE RVR to 40 and vis to 3/4 mile.
 ** When ALS inop, increase CAT AB RVR to 55 and vis to 1 mile, CAT CDE RVR to 60 and vis to 1 1/8 miles.



MISSED APPROACH: Climb straight ahead to 3000 to CEW R-170/35 DME (MRCEE), then as directed by ATC.

ATIS * 134.625 273.5	EGLIN APP CON 125.1 281.45 271°-089° 132.1 360.6 090°-270°	EGLIN TOWER 118.2 353.65	GND CON 121.8 335.8	CLNC DEL 127.7 377.2
--------------------------------	--	------------------------------------	-------------------------------	--------------------------------



Procedure not usable at times due to restricted area activity.

RADAR REQUIRED
DME REQUIRED FOR LOCALIZER APPROACH

EMERG SAFE ALT 100 NM 3600

ELEV 84	THRE 60	3000																												
192° 5.2 NM from FAF																														
HIRL all Rwy † Rwy 19 apch lgt 1500' nonstandard.		<table border="1"> <tr> <td>WEGDU I-CAH 2.3</td> <td>HVVVR I-CAH 7</td> <td>NELVE I-CAH 9</td> <td>CITEY I-CAH 13</td> <td>R-012 KANDE I-CAH 17</td> <td>CEW VORTAC</td> </tr> </table>					WEGDU I-CAH 2.3	HVVVR I-CAH 7	NELVE I-CAH 9	CITEY I-CAH 13	R-012 KANDE I-CAH 17	CEW VORTAC																		
WEGDU I-CAH 2.3	HVVVR I-CAH 7	NELVE I-CAH 9	CITEY I-CAH 13	R-012 KANDE I-CAH 17	CEW VORTAC																									
LOC FAF to MAP 4.7 NM		<table border="1"> <tr> <th>CATEGORY</th> <th>A</th> <th>B</th> <th>C</th> <th>D</th> <th>E</th> </tr> <tr> <td>S-ILS 19*</td> <td colspan="2">260/24</td> <td>200</td> <td colspan="2">(200-1/2)</td> </tr> <tr> <td>S-LOC 19**</td> <td>480/24</td> <td>420 (400-1/2)</td> <td>480/40</td> <td>420</td> <td>(400-3/4)</td> </tr> <tr> <td>CIRCLING</td> <td>660-1</td> <td>576 (600-1)</td> <td>760-2 676 (700-2)</td> <td>760-2 1/4 676 (700-2 1/4)</td> <td>760-2 1/2 676 (700-2 1/2)</td> </tr> </table>					CATEGORY	A	B	C	D	E	S-ILS 19*	260/24		200	(200-1/2)		S-LOC 19**	480/24	420 (400-1/2)	480/40	420	(400-3/4)	CIRCLING	660-1	576 (600-1)	760-2 676 (700-2)	760-2 1/4 676 (700-2 1/4)	760-2 1/2 676 (700-2 1/2)
CATEGORY	A	B	C	D	E																									
S-ILS 19*	260/24		200	(200-1/2)																										
S-LOC 19**	480/24	420 (400-1/2)	480/40	420	(400-3/4)																									
CIRCLING	660-1	576 (600-1)	760-2 676 (700-2)	760-2 1/4 676 (700-2 1/4)	760-2 1/2 676 (700-2 1/2)																									
<table border="1"> <tr> <td>Knots</td> <td>60</td> <td>90</td> <td>120</td> <td>150</td> <td>180</td> </tr> <tr> <td>Min:Sec</td> <td>4:42</td> <td>3:08</td> <td>2:21</td> <td>1:53</td> <td>1:34</td> </tr> </table>		Knots	60	90	120	150	180	Min:Sec	4:42	3:08	2:21	1:53	1:34	<p>GS 2.80° TCH 59</p>																
Knots	60	90	120	150	180																									
Min:Sec	4:42	3:08	2:21	1:53	1:34																									

VALPARAISO, FLORIDA

30°29'N-86°32'W

EGLIN AFB/DESTIN-FT WALTON BEACH (KVPS)

Amtd 5 17OCT13

ILS W or LOC W RWY 19

SE-3, 18 JUL 2019 to 15 AUG 2019

SE-3, 18 JUL 2019 to 15 AUG 2019