

VALPARAISO, FLORIDA

HI-TACAN RWY 30

TACAN DWG Chan 2	APCH CRS 313°	Rwy ldg 11,987 THRE 49 Arprt Elev 84
---------------------	------------------	--

JAL-436 [USAF]

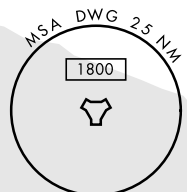
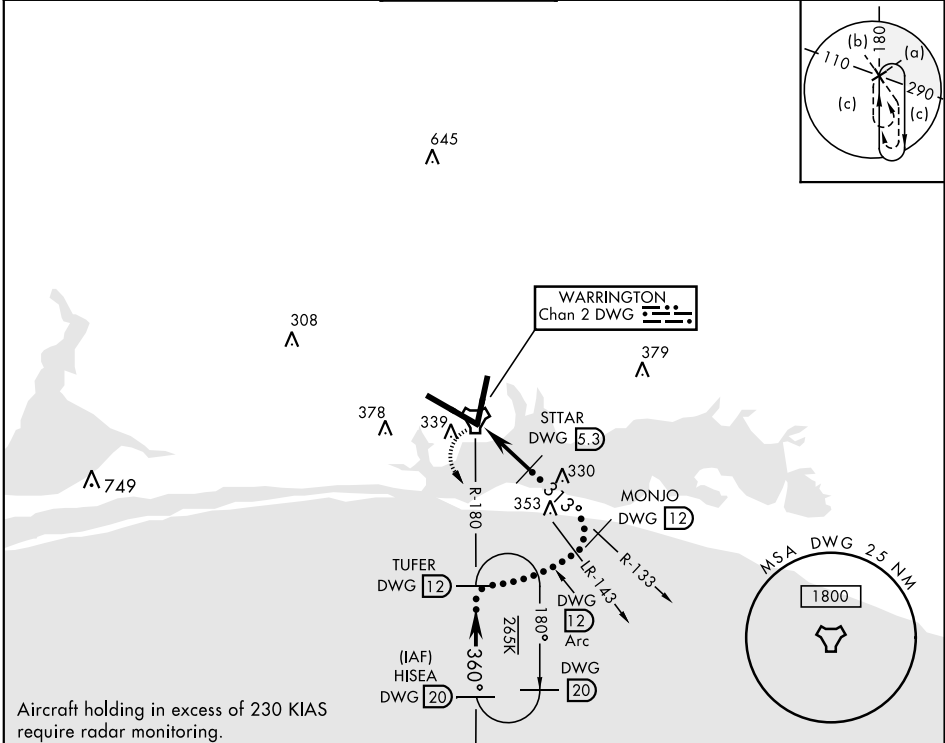
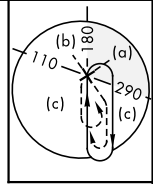
EGLIN AFB/DESTIN-FT WALTON BEACH (KVPS)

Procedure not usable at times due to restricted area activity.

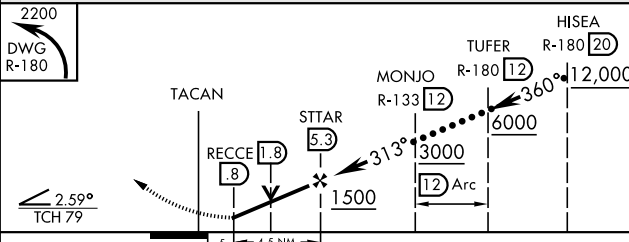


MISSED APPROACH: Climbing left turn to 2200 direct DWG R-180/12 DME (TUFER) and hold.

ATIS ★ 134.625 273.5	EGLIN APP CON 125.1 281.45 271°-089° 132.1 360.6 090°-270°	EGLIN TOWER 118.2 353.65	GND CON 121.8 335.8	CLNC DEL 127.7 377.2
-------------------------	--	-----------------------------	------------------------	-------------------------

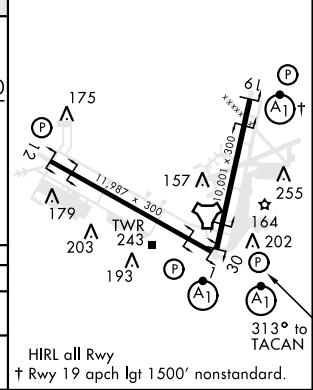


EMERG SAFE ALT 100 NM 3600



ELEV 84	THRE 49
---------	---------

CATEGORY	A	B	C	D	E
S-30	520/24 471 (500-1/2)		520/50 471 (500-1)		
CIRCLING	660-1 576 (600-1)		760-2 676 (700-2)	760-2 1/4 676 (700-2 1/4)	760-2 1/2 676 (700-2 1/2)



VALPARAISO, FLORIDA
Amdt 2 05MAR15

30°29'N-86°32'W

EGLIN AFB/DESTIN-FT WALTON BEACH (KVPS)

HI-TACAN RWY 30

SE-3, 18 JUL 2019 to 15 AUG 2019

SE-3, 18 JUL 2019 to 15 AUG 2019