

VALPARAISO, FLORIDA

# HI-TACAN RWY 19

TACAN DWG Chan 2	APCH CRS 199°	Rwy ldg 10,001 THRE 60 Arpt Elev 84
---------------------	------------------	---

JAL-436 [USAF] EGLIN AFB/DESTIN-FT WALTON BEACH (KVPS)

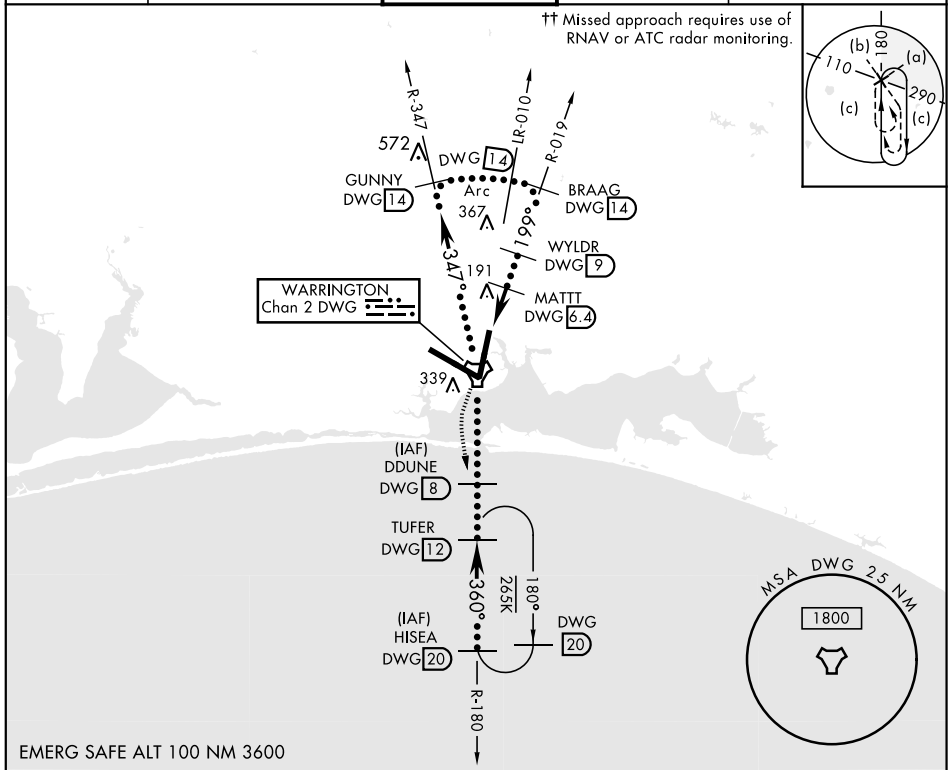
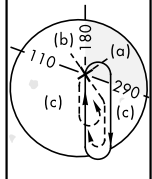
\* When ALS inop, increase CAT CDE vis to 1 3/8 miles.



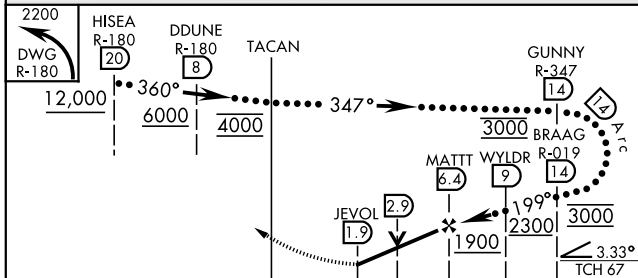
†† MISSED APPROACH: Climbing left turn to 2200 direct DWG TACAN R-180/12 DME (TUFER) and hold.

ATIS * 134.625 273.5	EGLIN APP CON 125.1 281.45 271°-089° 132.1 360.6 090°-270°	EGLIN TOWER 118.2 353.65	GND CON 121.8 335.8	CLNC DEL 127.7 377.2
-------------------------	--	-----------------------------	------------------------	-------------------------

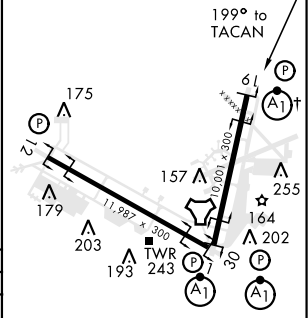
†† Missed approach requires use of RNAV or ATC radar monitoring.



EMERG SAFE ALT 100 NM 3600



ELEV 84	THRE 60
---------	---------



CATEGORY	C	D	E
S-19 *	540/50	480	(500-1)
CIRCLING	760-2 676 (700-2)	760-2 1/4 676 (700-2 1/4)	760-2 1/2 676 (700-2 1/2)

HIRL all Rwy  
† Rwy 19 apch lgt 1500' nonstandard.

VALPARAISO, FLORIDA

30°29'N-86°32'W

EGLIN AFB/DESTIN-FT WALTON BEACH (KVPS)

Amr 2 27JUN13

# HI-TACAN RWY 19

SE-3, 18 JUL 2019 to 15 AUG 2019

SE-3, 18 JUL 2019 to 15 AUG 2019