

VALPARAISO, FLORIDA

# HI-TACAN RWY 12

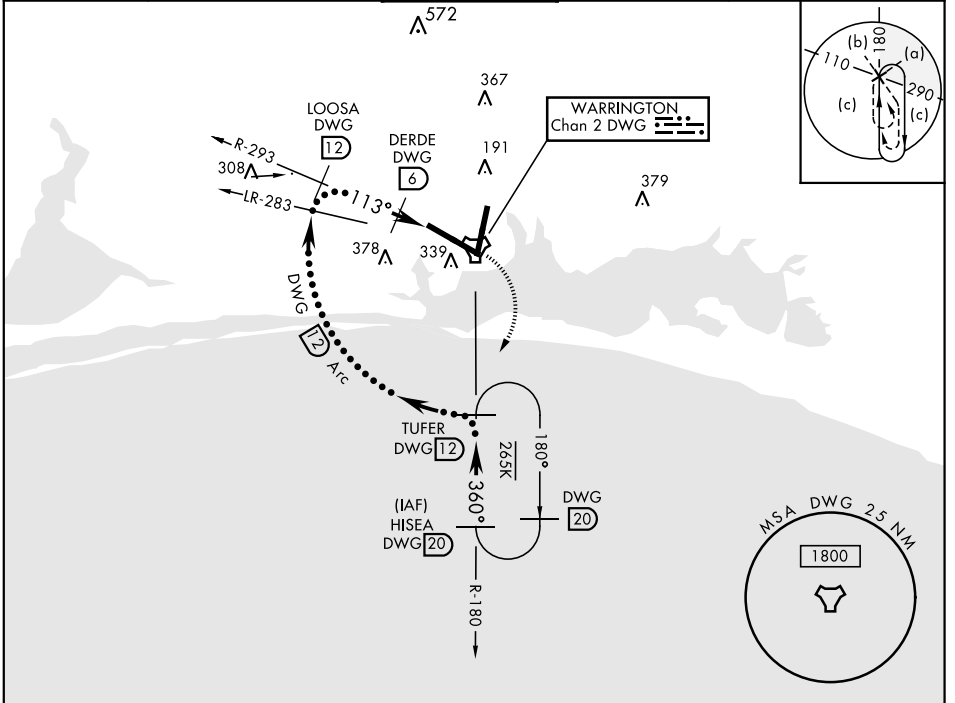
TACAN DWG Chan 2	APCH CRS 113°	Rwy ldg 11,987 THRE 84 Arpt Elev 84
---------------------	------------------	---

JAL-436 [USAF] EGLIN AFB/DESTIN-FT WALTON BEACH (KVPS)

Procedure not usable at times due to restricted area activity.

MISSED APPROACH: Climbing right turn to 2200 direct TUFER/12 DME and hold.

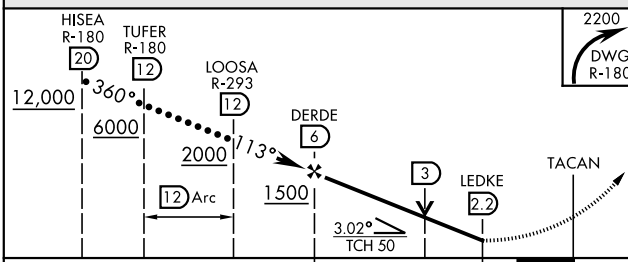
ATIS ★ 134.625 273.5	EGLIN APP CON 125.1 281.45 271°-089° 132.1 360.6 090°-270°	EGLIN TOWER 118.2 353.65	GND CON 121.8 335.8	CLNC DEL 127.7 377.2
-------------------------	--	-----------------------------	------------------------	-------------------------



SE-3, 18 JUL 2019 to 15 AUG 2019

SE-3, 18 JUL 2019 to 15 AUG 2019

EMERG SAFE ALT 100 NM 3600



ELEV 84	THRE 84
---------	---------

HIRL all Rwy  
† Rwy 19 apch lgt 1500' nonstandard.

CATEGORY	C	D	E
S-12	540-1 $\frac{3}{8}$	456	(500-1 $\frac{3}{8}$ )
CIRCLING	760-2 676 (700-2)	760-2 $\frac{1}{4}$ 676 (700-2 $\frac{1}{4}$ )	760-2 $\frac{1}{2}$ 676 (700-2 $\frac{1}{2}$ )

VALPARAISO, FLORIDA  
Amdt 1 04APR13

30°29'N-86°32'W

EGLIN AFB/DESTIN-FT WALTON BEACH (KVPS)

# HI-TACAN RWY 12