

VALPARAISO, FLORIDA

HI-TACAN RWY 1

TACAN DWG Chan 2	APCH CRS 360°	Rwy ldg THRE 48 Arpt Elev 84
----------------------------	-------------------------	--

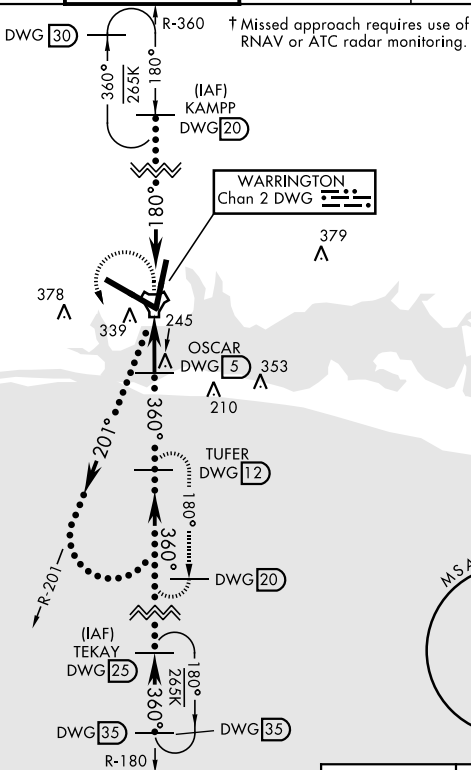
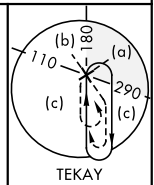
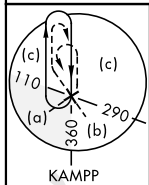
JAL-436 [USAF] EGLIN AFB/DESTIN-FT WALTON BEACH (KVPS)

* When ALS inop, increase CAT CDE vis to 1 3/8 miles.

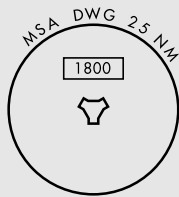


† MISSED APPROACH: Climb to 800 then climbing left turn to 2200 direct DWG R-180/12 DME (TUFER) and hold.

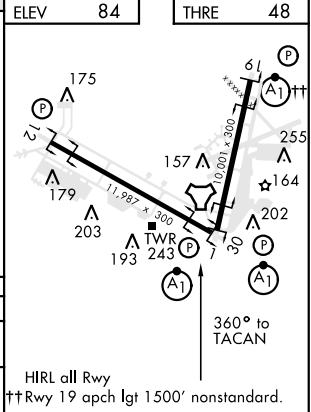
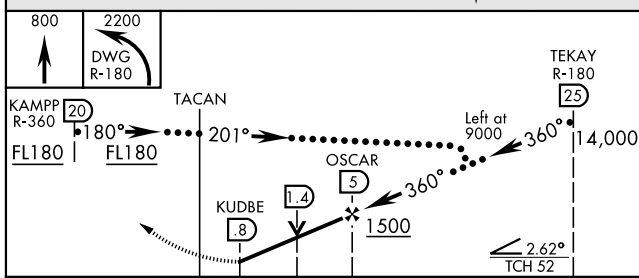
ATIS ★ 134.625 273.5	EGLIN APP CON 125.1 281.45 271° 089° 132.1 360.6 090° 270°	EGLIN TOWER 118.2 353.65	GND CON 121.8 335.8	CLNC DEL 127.7 377.2
--------------------------------	--	------------------------------------	-------------------------------	--------------------------------



Procedure not usable at times due to restricted area activity.



EMERG SAFE ALT 100 NM 3600



CATEGORY	C	D	E
S-1*	540/50	492 (500-1)	
CIRCLING	760-2 676 (700-2)	760-2 1/4 676 (700-2 1/4)	760-2 1/2 676 (700-2 1/2)

VALPARAISO, FLORIDA
Amdt 1 26MAY16

30°29'N-86°32'W EGLIN AFB/DESTIN-FT WALTON BEACH (KVPS)

HI-TACAN RWY 1

SE-3, 18 JUL 2019 to 15 AUG 2019

SE-3, 18 JUL 2019 to 15 AUG 2019