

HI-ILS or LOC RWY 30

LOC I-VPS 109.1	APCH CRS 300°	Rwy ldg 11,987 THRE 49 Arpt Elev 84
---------------------------	-------------------------	--

JAL-436 [USAF] EGLIN AFB/DESTIN-FT WALTON BEACH (KVPS)

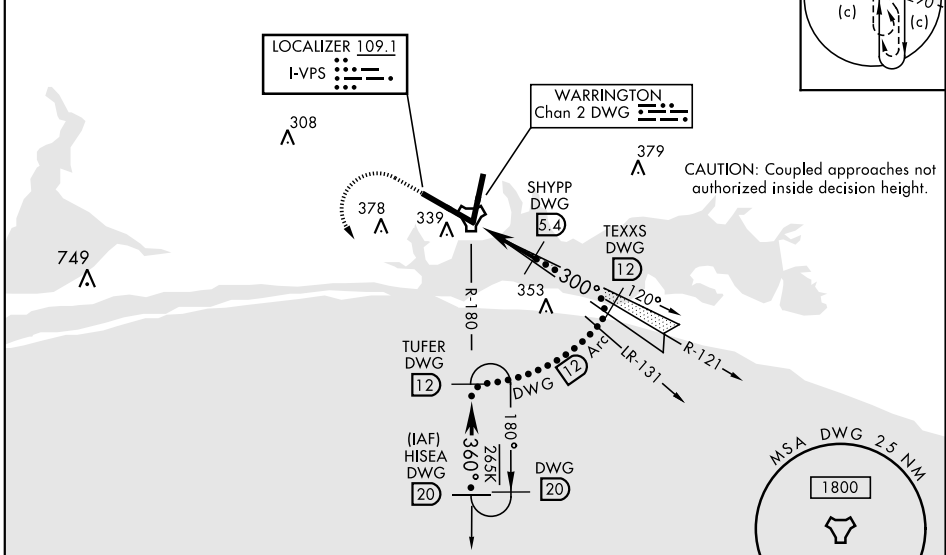
*When ALS inop, increase CAT CDE RVR to 40 and vis to 3/4 mile.
 **When ALS inop, increase CAT CDE RVR to 60 and vis to 1 1/8 miles.



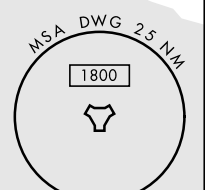
† MISSED APPROACH: Climb straight ahead to 600 then climbing left turn to 2200 direct TUFER/12 DME and hold.

ATIS ★ 134.625 273.5	EGLIN APP CON 125.1 281.45 271°-089° 132.1 360.6 090°-270°	EGLIN TOWER 118.2 353.65	GND CON 121.8 335.8	CLNC DEL 127.7 377.2
--------------------------------	--	------------------------------------	-------------------------------	--------------------------------

Aircraft holding in excess of 230 KIAS require radar monitoring.
 Procedure not usable at times due to restricted area activity.



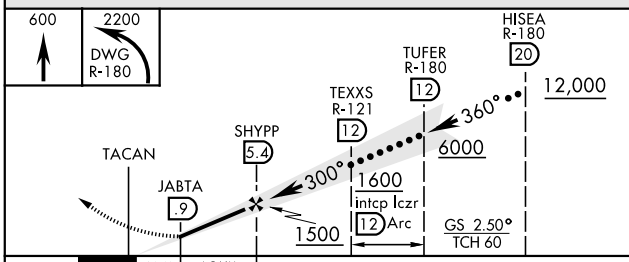
CAUTION: Coupled approaches not authorized inside decision height.



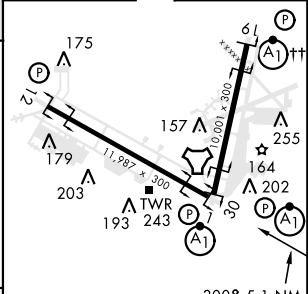
DME or RADAR REQUIRED

(For LOC approach)

EMERG SAFE ALT 100 NM 3600



ELEV 84	THRE 49
---------	---------



CATEGORY	C	D	E
S-ILS 30*	249/24	200	(200-1/2)
S-LOC 30**	440/35	391	(400-3/8)
CIRCLING	760-2 676 (700-2)	760-2 1/4 676 (700-2 1/4)	760-2 1/2 676 (700-2 1/2)

HIRL all Rwy					
†† Rwy 19 apch lgt 1500' nonstandard.					
LOC FAF to MAP 4.5 NM					
Knots	120	140	160	180	200
Min:Sec	2:15	1:56	1:41	1:30	1:21

HI-ILS or LOC RWY 30

SE-3, 18 JUL 2019 to 15 AUG 2019

SE-3, 18 JUL 2019 to 15 AUG 2019