


VALPARAISO, FLORIDA

HI-ILS or LOC RWY 19

LOC I-CAH 109.1	APCH CRS 192°	Rwy Idg THRE 60 Arpt Elev 84	JAL-436 [USAF] EGLIN AFB/DESTIN-FT WALTON BEACH(KVPS)
---------------------------	-------------------------	--	---

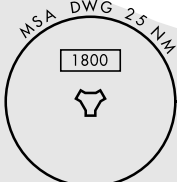
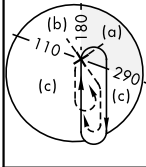
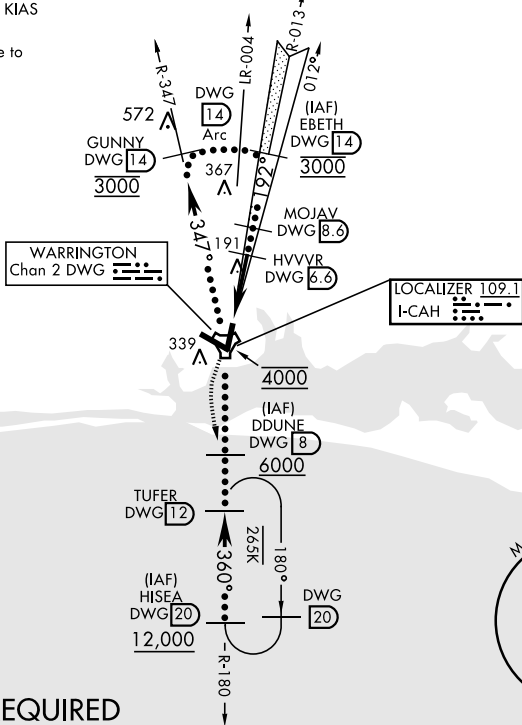
* When ALS inop, increase CAT CDE RVR to 40 and vis to ¾ mile.
 ** When ALS inop, increase CAT CD RVR to 60 and vis to 1½ miles, CAT E vis to 1¼ miles.

ALS-F-1 

MISSED APPROACH: Climb to 2200 on the DWG R-180 to TUFER/12 DME and hold.

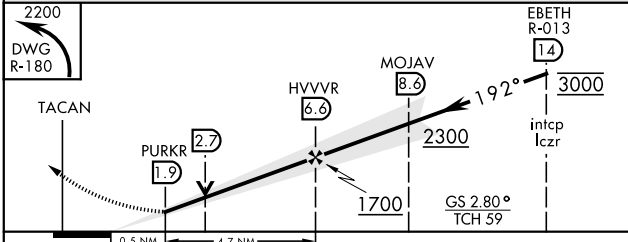
ATIS * 134.625 273.5	EGLIN APP CON 125.1 281.45 271°-089° 132.1 360.6 090°-270°	EGLIN TOWER 118.2 353.65	GND CON 121.8 335.8	CLNC DEL 127.7 377.2
--------------------------------	--	------------------------------------	-------------------------------	--------------------------------

Aircraft holding in excess of 230 KIAS require radar monitoring.
 Procedure not usable at times due to restricted area activity.



DME OR RADAR REQUIRED
 (For Localizer approach)

EMERG SAFE ALT 100 NM 3600



ELEV	84	THRE	60
		192° 5.2 NM from FAF 175, 179, 203, 157, 202, 164, 255, 300, 193, 243, 300	
HIRL all Rwy			
† Rwy 19 apch lgt 1500' nonstandard.			
FAF to MAP 4.7 NM			
Knots	120	140	160 180 200
Min:Sec	2:21	2:01	1:46 1:34 1:25

VALPARAISO, FLORIDA

30°29'N-86°32'W

EGLIN AFB/DESTIN-FT WALTON BEACH(KVPS)

Amtd 4 17OCT13

HI-ILS or LOC RWY 19

SE-3, 18 JUL 2019 to 15 AUG 2019

SE-3, 18 JUL 2019 to 15 AUG 2019