

WAAS CH 45517 W28A	APP CRS 281°	Rwy Idg TDZE Apt Elev	9003 413 421
---------------------------------	------------------------	-----------------------------	-----------------------------------------

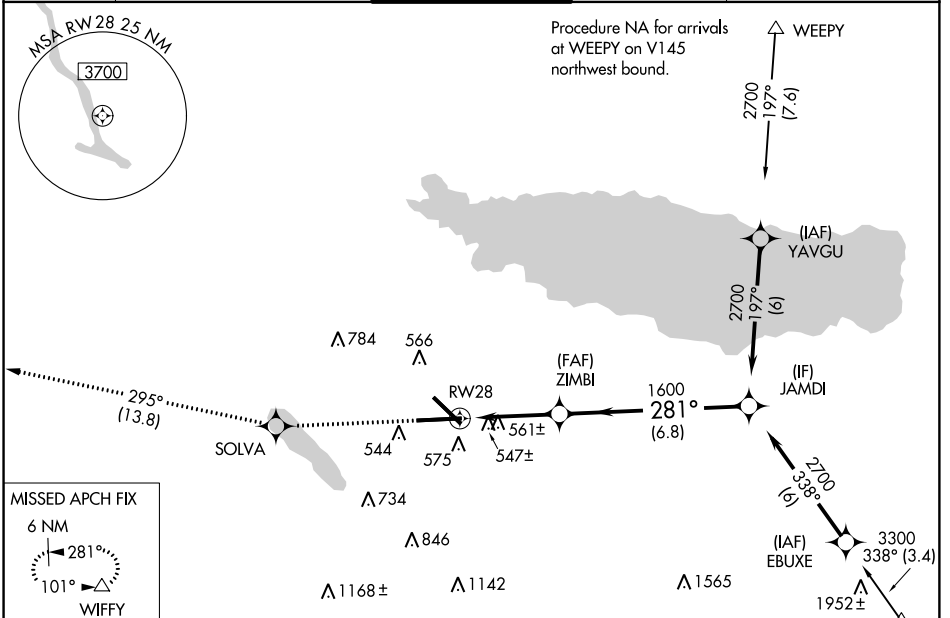
RNAV (GPS) Z RWY 28

SYRACUSE HANCOCK INTL (SYR)

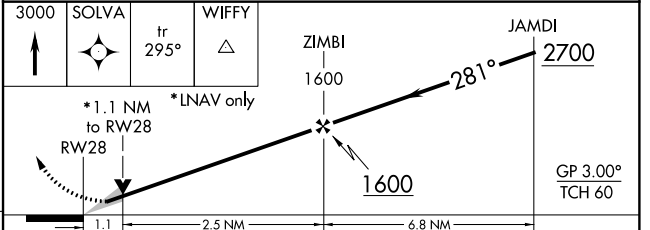
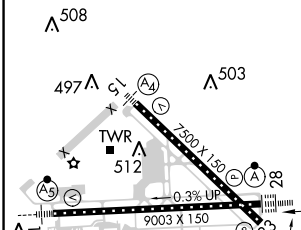
▽ For uncompensated Baro-VNAV systems, LNAV/VNAV NA below -21°C (-6°F) or above 54°C (130°F). DME/DME RNP-0.3 NA. For inop ALSF-2, increase LNAV Cats C/D visibility to 1½ mile.

ALSF-2
 MISSED APPROACH: Climb to 3000 direct SOLVA and on track 295° to WIFFY and hold.

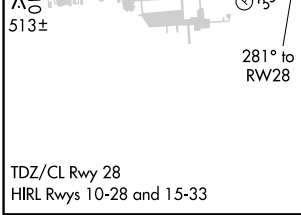
ATIS 124.225	SYRACUSE APP CON 134.275 279.6	SYRACUSE TOWER 120.3 239.0	GND CON 121.7 348.6	CLNC DEL 125.05 257.775
------------------------	------------------------------------------	--------------------------------------	-------------------------------	-----------------------------------



ELEV 421	D	TDZE 413
-----------------	----------	-----------------



	A	B	C	D
CATEGORY				
LPV DA		613/18	200 (200-½)	
LNAV/VNAV DA		850/50	437 (500-1)	
LNAV MDA	820/24	407 (400-½)	820/40	407 (400-¾)
CIRCLING	880-1 459 (500-1)	900-1 479 (500-1)	900-1½ 479 (500-1½)	980-2 559 (600-2)



NE-2, 18 JUL 2019 to 15 AUG 2019

NE-2, 18 JUL 2019 to 15 AUG 2019