

WAAS CH <b>81823</b> <b>W33A</b>	APP CRS <b>327°</b>	Rwy Idg TDZE Apt Elev	<b>7500</b> <b>409</b> <b>421</b>
--	------------------------	-----------------------------	---

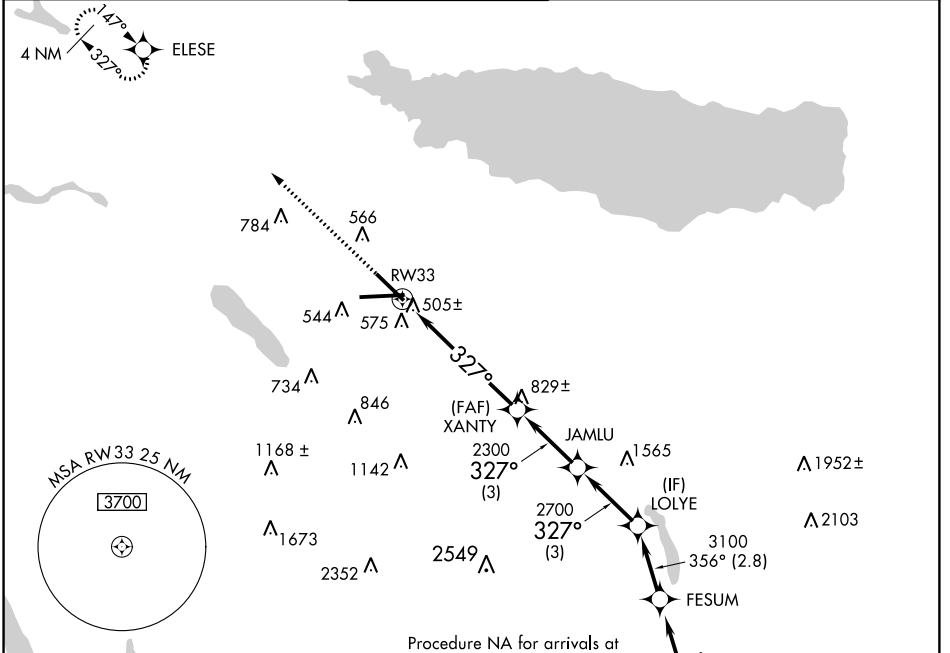
# RNAV (GPS) RWY 33

SYRACUSE HANCOCK INTL (SYR)

Baro-VNAV NA below -15°C (5°F).  
DME/DME RNP-0.3 NA.

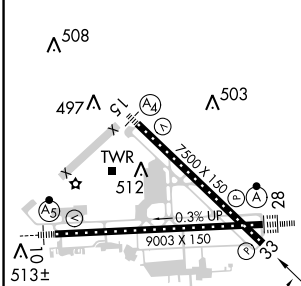
MISSED APPROACH: Climb to 3000 direct ELESE and hold.

ATIS <b>124.225</b>	SYRACUSE APP CON <b>134.275 279.6</b>	SYRACUSE TOWER <b>120.3 239.0</b>	GND CON <b>121.7 348.6</b>	CLNC DEL <b>125.05 257.775</b>
------------------------	--	--------------------------------------	-------------------------------	-----------------------------------

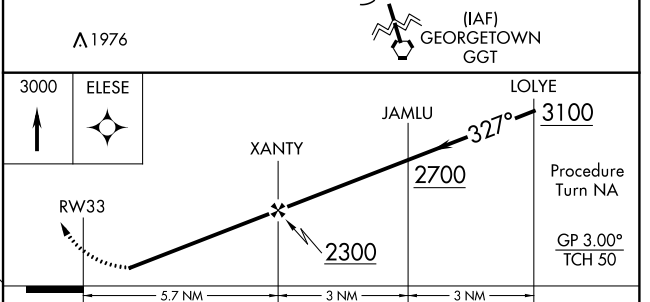


Procedure NA for arrivals at GGT VORTAC via V153-273 southeast bound.

ELEV <b>421</b>	<b>D</b>	TDZE <b>409</b>
-----------------	----------	-----------------



TDZ/CL Rwy 28  
HIRL Rws 10-28 and 15-33



CATEGORY	A	B	C	D
LPV DA	734/60 325 (400-1¼)			
LNAV/VNAV DA	874-1¾ 465 (500-1¾)			
LNAV MDA	880/50	471 (500-1)	880/60 471 (500-1¼)	880-1½ 471 (500-1½)
CIRCLING	880-1¾	459 (500-1¾)	900-1¾ 479 (500-1¾)	980-2 559 (600-2)

NE-2, 18 JUL 2019 to 15 AUG 2019

NE-2, 18 JUL 2019 to 15 AUG 2019