

LOC/DME I-SEM 110.5 Chan 42	APP CRS 329°	Rwy Idg 8014	165
		TDZE 165	
		Apt Elev 166	

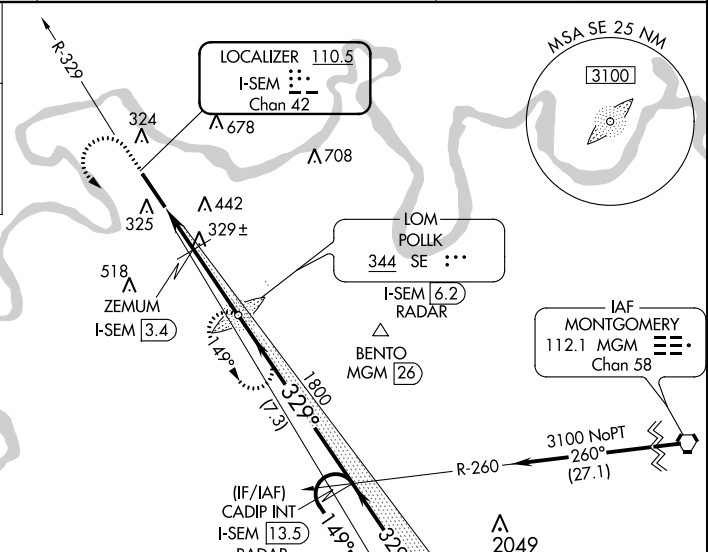
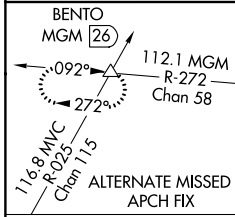
ILS Z or LOC Z RWY 33

CRAIG FIELD (SEM)

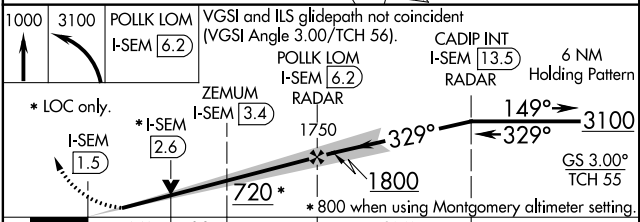
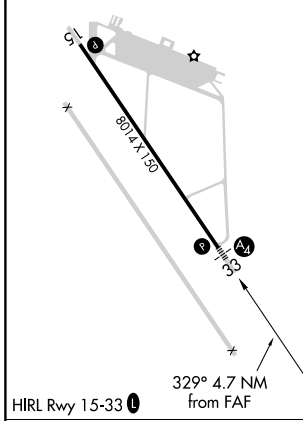
⚠ For inoperative MALS, increase S-LOC 33 Cat D visibility to 1 $\frac{1}{2}$ mile and increase ZEMUM fix minimums S-LOC 33 Cats C and D visibility to 1 $\frac{1}{2}$ mile. VDP NA with Montgomery altimeter setting. When local altimeter setting not received, use Montgomery altimeter setting and increase DA 78 feet, all MDA 80 feet, increase S-LOC 33 Cats C and D visibility $\frac{1}{8}$ mile, Circling Cat C visibility $\frac{1}{2}$ mile and Circling Cat D visibility $\frac{1}{4}$ mile, increase ZEMUM fix minimums S-LOC 33 Cats C and D visibility $\frac{1}{8}$ mile and Circling Cat C visibility $\frac{1}{2}$ mile and Circling Cat D visibility $\frac{1}{4}$ mile. For inoperative MALS, when using Montgomery altimeter setting, increase S-ILS 33 all Cats visibility to $\frac{1}{2}$ mile, S-LOC 33 Cats C and D visibility to 1 $\frac{1}{4}$ mile and increase ZEMUM fix minimums Cats C and D visibility to 1 $\frac{1}{2}$ mile. ADF required.

MALS
 MISSED APPROACH: Climb to 1000 then climbing left turn to 3100 direct POLLK LOM/I-SEM 6.2 DME/RADAR and hold, continue climb-in-hold to 3100.

AWOS-3PT 119.15	MONTGOMERY APP CON * 124.0 363.025	UNICOM 122.7 (CTAF)
---------------------------	--	-------------------------------



ELEV 166	TDZE 165
----------	----------



CATEGORY	A	B	C	D
S-ILS 33	365- $\frac{3}{4}$		200 (200- $\frac{3}{4}$)	
S-LOC 33	720- $\frac{3}{4}$	555 (600- $\frac{3}{4}$)	720-1 $\frac{3}{8}$	555 (600-1 $\frac{3}{8}$)
C CIRCLING	720-1	594 (600-1)	760-1 $\frac{1}{2}$	1040-2 $\frac{3}{4}$
	554 (600-1)	594 (600-1)	594 (600-1 $\frac{1}{2}$)	874 (900-2 $\frac{3}{4}$)
ZEMUM FIX MINIMUMS				
S-LOC 33	580- $\frac{3}{4}$	415 (500- $\frac{3}{4}$)	580-1	415 (500-1)
C CIRCLING	660-1	760-1	760-1 $\frac{1}{2}$	1040-2 $\frac{3}{4}$
	494 (500-1)	594 (600-1)	594 (600-1 $\frac{1}{2}$)	874 (900-2 $\frac{3}{4}$)

SE-4, 18 JUL 2019 to 15 AUG 2019

SE-4, 18 JUL 2019 to 15 AUG 2019