

MARCS ONE ARRIVAL

SAN ANTONIO, TEXAS

SAN ANTONIO APP CON
 127.1 269.1
 124.45 335.625
 KELLY FLD ATIS
 120.45 273.5
 RANDOLPH AFB ATIS*
 290.525
 SAN ANTONIO INTL D-ATIS
 118.9
 STINSON MUNI ATIS*
 128.8

WACO
 115.3 ACT
 Chan 100
 N 31°39.74' - W 97°16.14'
 L-19, H-6

MAVERICK
 113.1 TTT
 Chan 78

WINDU
 N31°31.83'
 W97°04.95'
 L-19, H-6

GOOCH SPRINGS
 112.5 AGJ
 Chan 72

BLEWE
 N31°12.46'
 W97°12.54'

LUFKIN
 112.1 LFK
 Chan 58
 N31°09.75'-W94°43.01'
 L-19-21, H-6

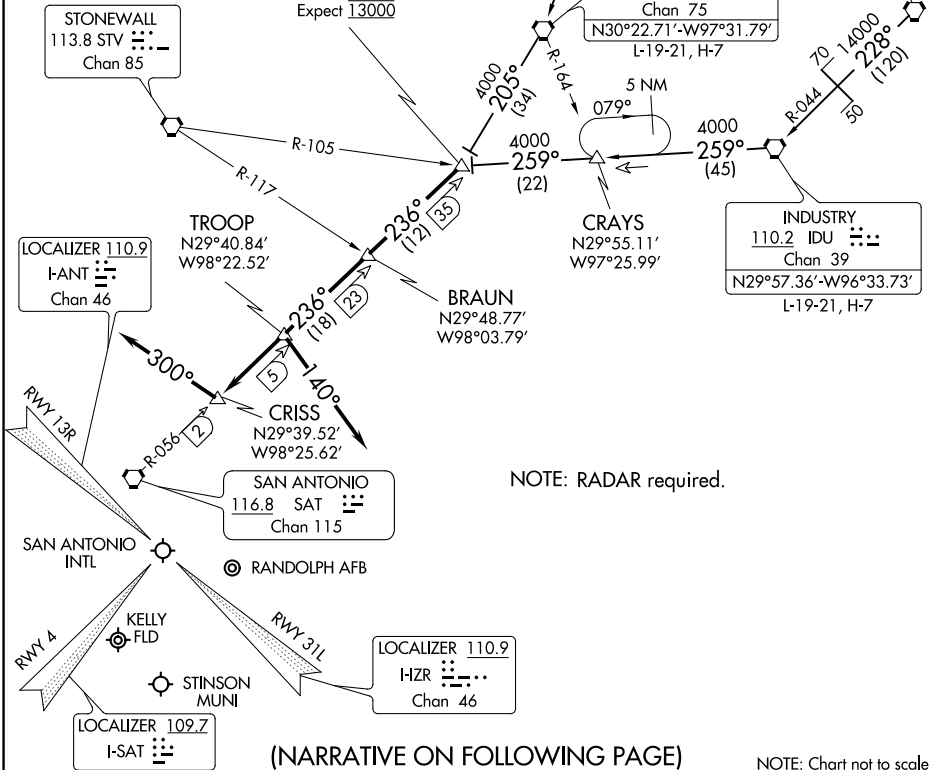
MARCS
 N29°53.87'
 W97°51.68'
 L-15, H-7
 TURBOJET VERTICAL
 NAVIGATION PLANNING
 INFORMATION
 Expect 13000

CENTEX
 112.8 CWK
 Chan 75
 N30°22.71'-W97°31.79'
 L-19-21, H-7

STONEWALL
 113.8 STV
 Chan 85

SC-3, 18 JUL 2019 to 15 AUG 2019

SC-3, 18 JUL 2019 to 15 AUG 2019



(NARRATIVE ON FOLLOWING PAGE)

NOTE: Chart not to scale

MARCS ONE ARRIVAL

SAN ANTONIO, TEXAS