


WAAS CH 86202 W31A	APP CRS 313°	Rwy Idg TDZE Apt Elev	5811 214 214
--	------------------------	-----------------------------	---

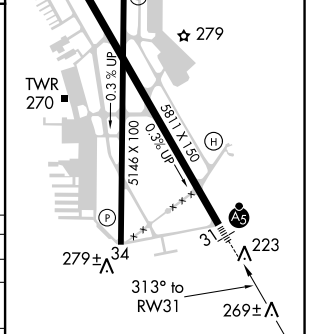
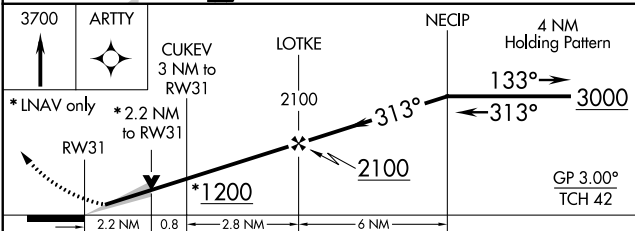
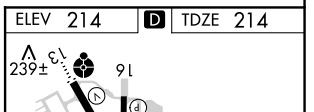
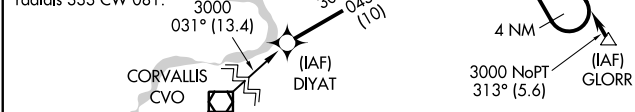
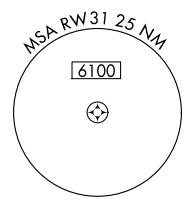
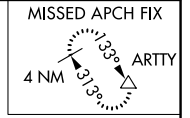
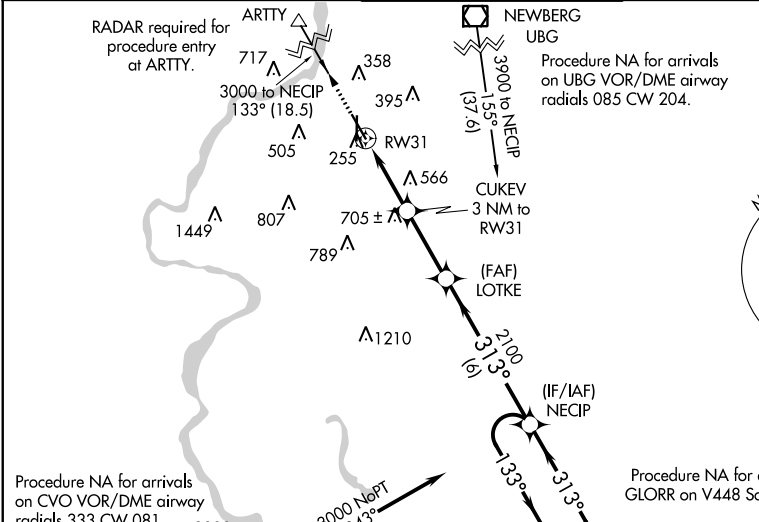
RNAV (GPS) RWY 31

MCNARY FIELD (SLE)

⚠ For uncompensated Baro-VNAV systems, LNAV/VNAV NA below -15°C (5°F) or above 54°C (130°F). DME/DME RNP-0.3 NA. When local altimeter setting not received, use Mc Minnville altimeter setting and increase all DA 49 feet; increase all MDA 60 feet; increase LNAV/VNAV visibility all Cats to 1½ miles, LNAV Cat C and D visibility to 1¾ miles, and Circling Cat C visibility to 2½ miles. Baro-VNAV and VDP NA when using Mc Minnville altimeter setting. For inop MALSRL, increase LNAV/VNAV all Cats visibility to 1¾ miles and increase LNAV Cat C and D visibility to 2 miles. For inop MALSRL when using Mc Minnville altimeter setting, increase LPV all Cats visibility to RVR 4500, increase LNAV Cat C/D visibility to 2½ miles. **RVR 1800 authorized with use of FD or AP or HUD to DA, NA when using Mc Minnville altimeter setting.

MALSRL

MISSED APPROACH:
 Climb to 3700 direct ARTTY and hold, continue climb-in-hold to 3700.

ATIS 124.55	SEATTLE CENTER 125.8 291.7	SALEM TOWER * 119.1 (CTAF) 0 257.2	GND CON 121.9	UNICOM 122.95
-----------------------	--------------------------------------	--	-------------------------	-------------------------



CATEGORY	A	B	C	D
LPV DA **		414/24	200 (200-½)	
LNAV/VNAV DA		631/50	417 (500-1)	
LNAV MDA	960/24 746 (800-½)	960/40 746 (800-¾)	960-1¾ 746 (800-1¾)	746 (800-1¾)
C CIRCLING	960-1 746 (800-1)	960-1¼ 746 (800-1¼)	1000-2¼ 786 (800-2¼)	1260-3 1046 (1100-3)

REIL Rwy 13, 16 and 34 **(L)**
 HIRL Rwy 13-31 **(L)**
 MIRL Rwy 16-34 **(L)**

NW-1, 18 JUL 2019 to 15 AUG 2019

NW-1, 18 JUL 2019 to 15 AUG 2019