

LOC/DME I-SLE <b>110.3</b> Chan 40	APP CRS <b>133°</b>	Rwy Idg TDZE Apt Elev	<b>5811</b> <b>204</b> <b>214</b>
--	------------------------	-----------------------------	---

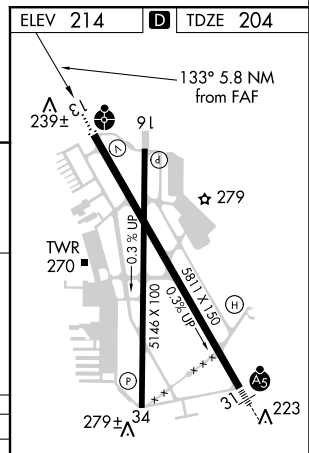
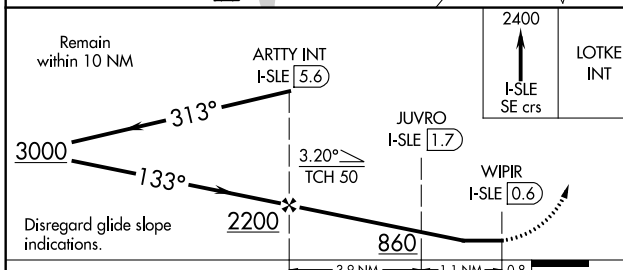
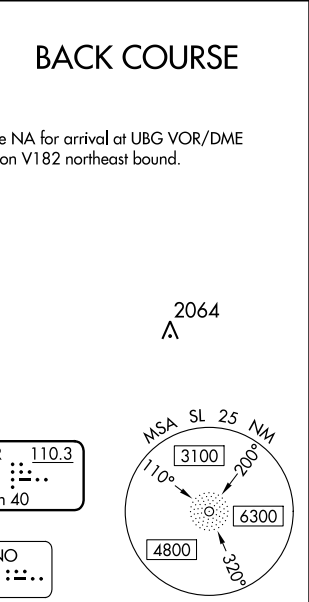
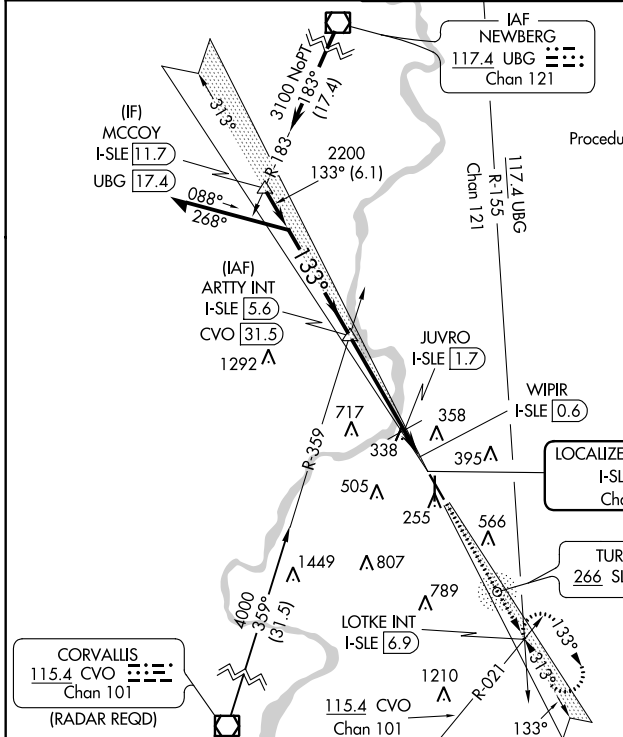
# LOC BC RWY 13

MCNARY FIELD (SLE)

When local altimeter setting not received, use Mc Minnville altimeter setting:  
 Increase all MDA 60 feet; increase S-13 Cat C/D visibility to 1 1/8 SM and Circling Cat C visibility to 2 1/2 SM. For inop ALS, increase S-13 Cat C and D visibility to 1 1/8 SM. For inop ALS when using Mc Minnville altimeter setting, increase S-13 Cat D visibility to 1 3/8 SM. Rwy 13 helicopter visibility reduction below 3/4 SM NA DME required. Rwy 34 helicopter visibility reduction below 1 SM NA.

**ODALS**  
 MISSED APPROACH: Climb to 2400 on I-SLE Localizer SE course to LOTKE INT/ I-SLE 6.9 DME and hold.

ATIS <b>124.55</b>	SEATTLE CENTER <b>125.8 291.7</b>	SALEM TOWER ★ <b>119.1 (CTAF) 0 257.2</b>	GND CON <b>121.9</b>	UNICOM <b>122.95</b>
-----------------------	--------------------------------------	--	-------------------------	-------------------------



CATEGORY	A	B	C	D
S-13	600-3/4	396 (400-3/4)	600-1	396 (400-1)
CIRCLING	900-1 686 (700-1)	940-1 726 (800-1)	1000-2 1/4 786 (800-2 1/4)	1260-3 1046 (1100-3)

REIL Rws 13, 16 and 34 269± A  
 HIRL Rwy 13-31  
 MIRL Rwy 16-34

NW-1, 18 JUL 2019 to 15 AUG 2019

NW-1, 18 JUL 2019 to 15 AUG 2019