

(SCUTA2.SCUTA) 18312

ROANOKE-BLACKSBURG RGNL/WOODRUM FIELD (R.O.A)

SCUTA TWO DEPARTURE (RNAV) AL-349 (FAA)

ROANOKE, VIRGINIA

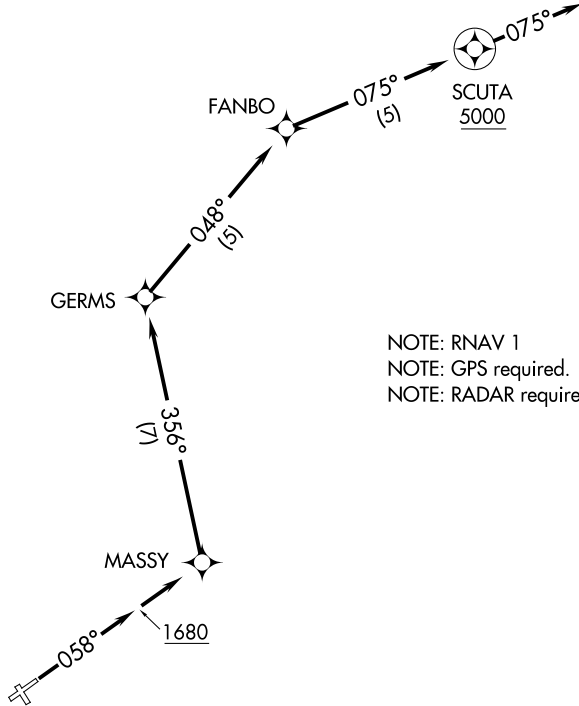
ATIS
132.375
CLNC DEL
119.7
GND CON
121.9 257.8
ROANOKE TOWER
118.3 257.8
ROANOKE DEP CON
126.9 339.8

**TOP ALTITUDE:
6000**

TAKEOFF MINIMUMS

Rwys 16, 24, 34: NA - Air Traffic.

Rwy 6: Standard with minimum climb
of 560' per NM to 2900.



NOTE: RNAV 1
NOTE: GPS required.
NOTE: RADAR required.

NE-3, 18 JUL 2019 to 15 AUG 2019

NE-3, 18 JUL 2019 to 15 AUG 2019

NOTE: Chart not to scale.



DEPARTURE ROUTE DESCRIPTION

TAKEOFF RUNWAY 6: Climb heading 058° to 1680, then direct MASSY.
Then on depicted route to cross SCUTA at or above 5000 on heading 075° for
RADAR vectors. Maintain 5000 or assigned altitude, expect clearance to filed
altitude 10 minutes after departure.

SCUTA TWO DEPARTURE (RNAV)

ROANOKE, VIRGINIA

(SCUTA2.SCUTA) 10DEC15

ROANOKE-BLACKSBURG RGNL/WOODRUM FIELD (R.O.A)