

WAAS CH 70722 W34A	APP CRS 336°	Rwy Idg TDZE Apt Elev	5810 1160 1175
--	------------------------	-----------------------------	---

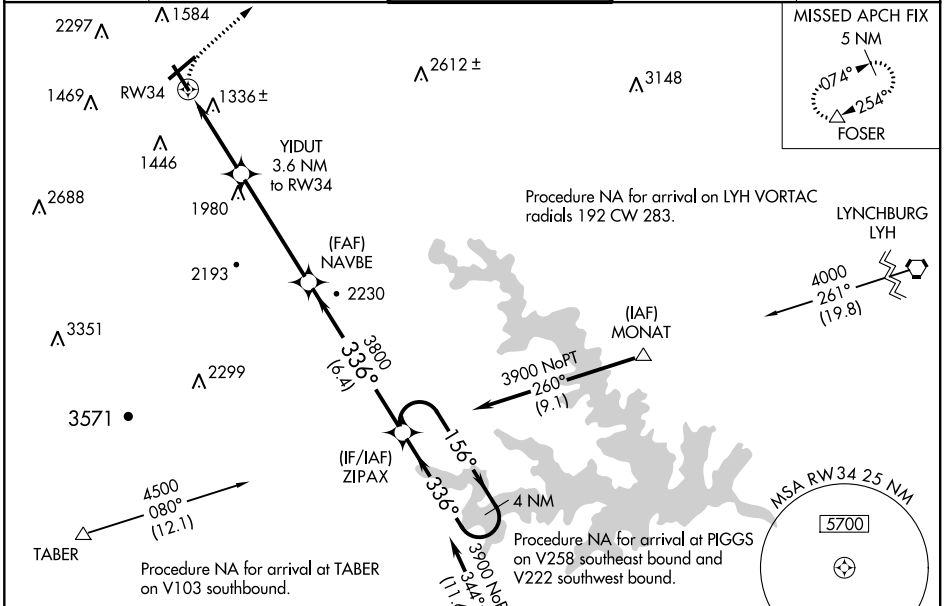
RNAV (GPS) RWY 34

ROANOKE-BLACKSBURG RGNL/WOODRUM FIELD (R.O.A)

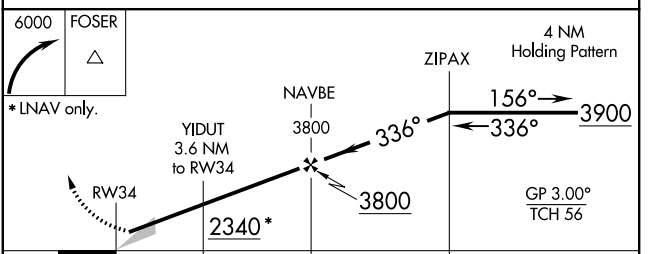
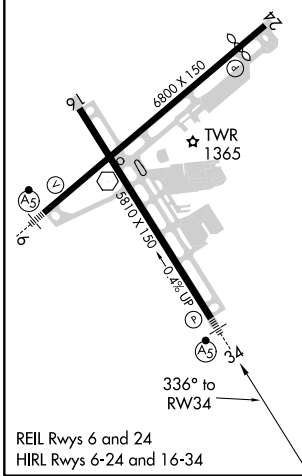
For uncompensated Baro-VNAV systems, LNAV/VNAV NA below -17°C (2°F) or above 36°C (96°F). Circling NA NW of Rwy 6-24. DME/DME RNP-0.3 NA. Inop table does not apply to LPV, LNAV/VNAV or LNAV Cat C/D. For inop MALSR, increase LNAV Cat A visibility to 1 1/4 mile. # Missed approach requires climb of 400 feet per NM to 2800.

MALSRL 	MISSED APPROACH: Climbing right turn to 6000 direct FOSEK and hold.
------------	--

ATIS 132.375	ROANOKE APP CON 126.9 339.8	ROANOKE TOWER 118.3 257.8	GND CON 121.9 257.8	CLNC DEL 119.7
------------------------	---------------------------------------	-------------------------------------	-------------------------------	--------------------------



ELEV 1175	D	TDZE 1160
-----------	----------	-----------



CATEGORY	A	B	C	D
LPV DA		2155-4	995 (1000-4)	
LPV DA		#1560-1	400 (400-1)	
LNAV/VNAV DA		2146-4	986 (1000-4)	
LNAV MDA	2280-1	1120 (1200-1)	2280-3	1120 (1200-3)
C CIRCLING	2280-1 1/4 1105 (1200-1 1/4)	2280-1 1/2 1105 (1200-1 1/2)	2420-3 1245 (1300-3)	2800-3 1625 (1700-3)

NE-3, 18 JUL 2019 to 15 AUG 2019

NE-3, 18 JUL 2019 to 15 AUG 2019