

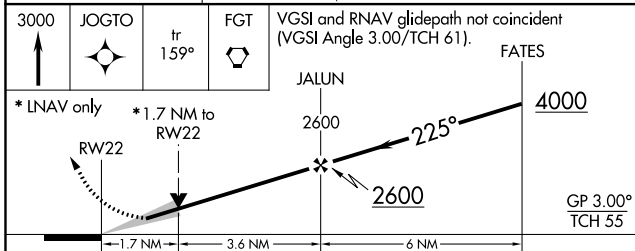
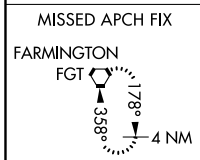
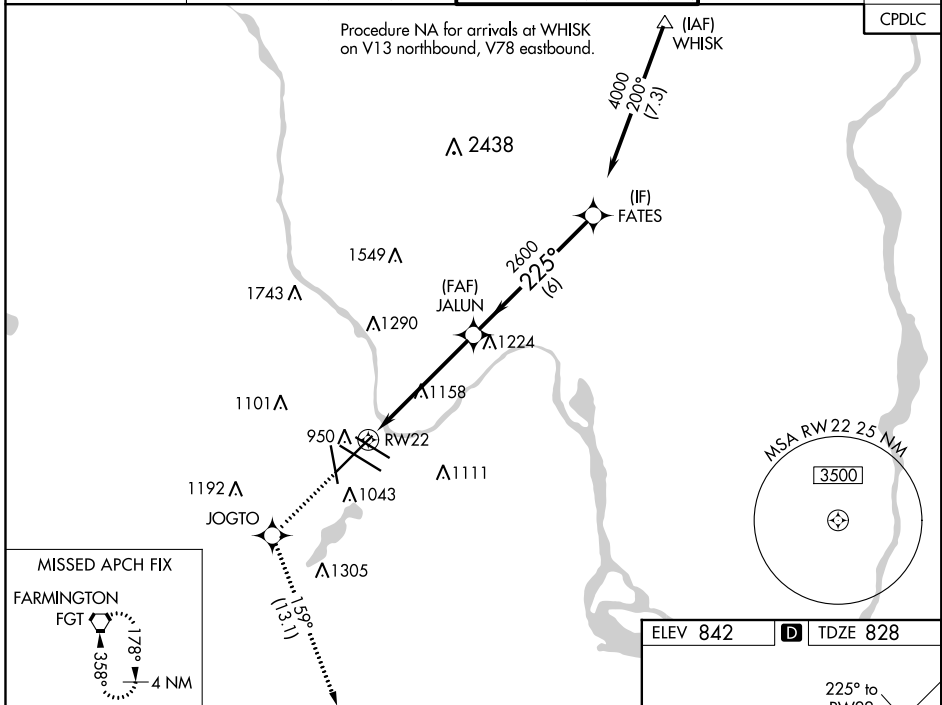
WAAS CH 60927 W22A	APP CRS 225°	Rwy Idg 10006 TDZE 828 Apt Elev 842
--	------------------------	--

RNAV (GPS) RWY 22

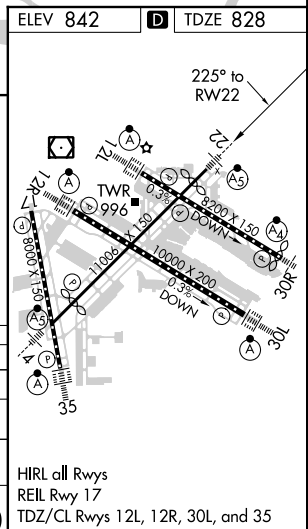
MINNEAPOLIS-ST PAUL INTL/WOLD-CHAMBERLAIN (MSP)

DME/DME RNP-0.3 NA. For uncompensated Baro-VNAV systems, LNAV/VNAV NA below -27°C (-16°F) or above 54°C (130°F). For inop MALS, increase LPV all Cats visibility to 1/2 mile, LNAV/VNAV all Cats visibility to 1/4 mile and LNAV Cat E visibility to 1/4 mile.	MALS AS	MISSED APPROACH: Climb to 3000 direct JOGTO and on track 159° to FGT VORTAC and hold.

D-ATIS ARR 135.35 239.275 DEP 120.8	MINNEAPOLIS APP CON 118.725 335.65 (Rwy 35) 119.3 335.65 (12L-30R, 4-22, 17) 126.95 335.65 (12R-30L)	MINNEAPOLIS TOWER 123.675 273.55 (17-35) 123.95 273.55 (12L-30R) 126.7 273.55 (12R-30L, 4-22)	GND CON N 121.8 348.6 S 121.9 348.6 W 127.925 348.6	CLNC DEL 133.2
---	--	---	---	--------------------------



CATEGORY	A	B	C	D	E
LPV DA	1190/40 362 (400-3/4)				
LNAV/VNAV DA	1227/45 399 (400-2/3)				
LNAV MDA	1420/40 592 (600-3/4)	1420-1/4 592 (600-1/4)			
CIRCLING	1420-1 578 (600-1)	1460-1 3/4 618 (700-1 3/4)	1660-2 3/4 818 (900-2 3/4)	1800-3 958 (1000-3)	



NC-1, 18 JUL 2019 to 15 AUG 2019

NC-1, 18 JUL 2019 to 15 AUG 2019