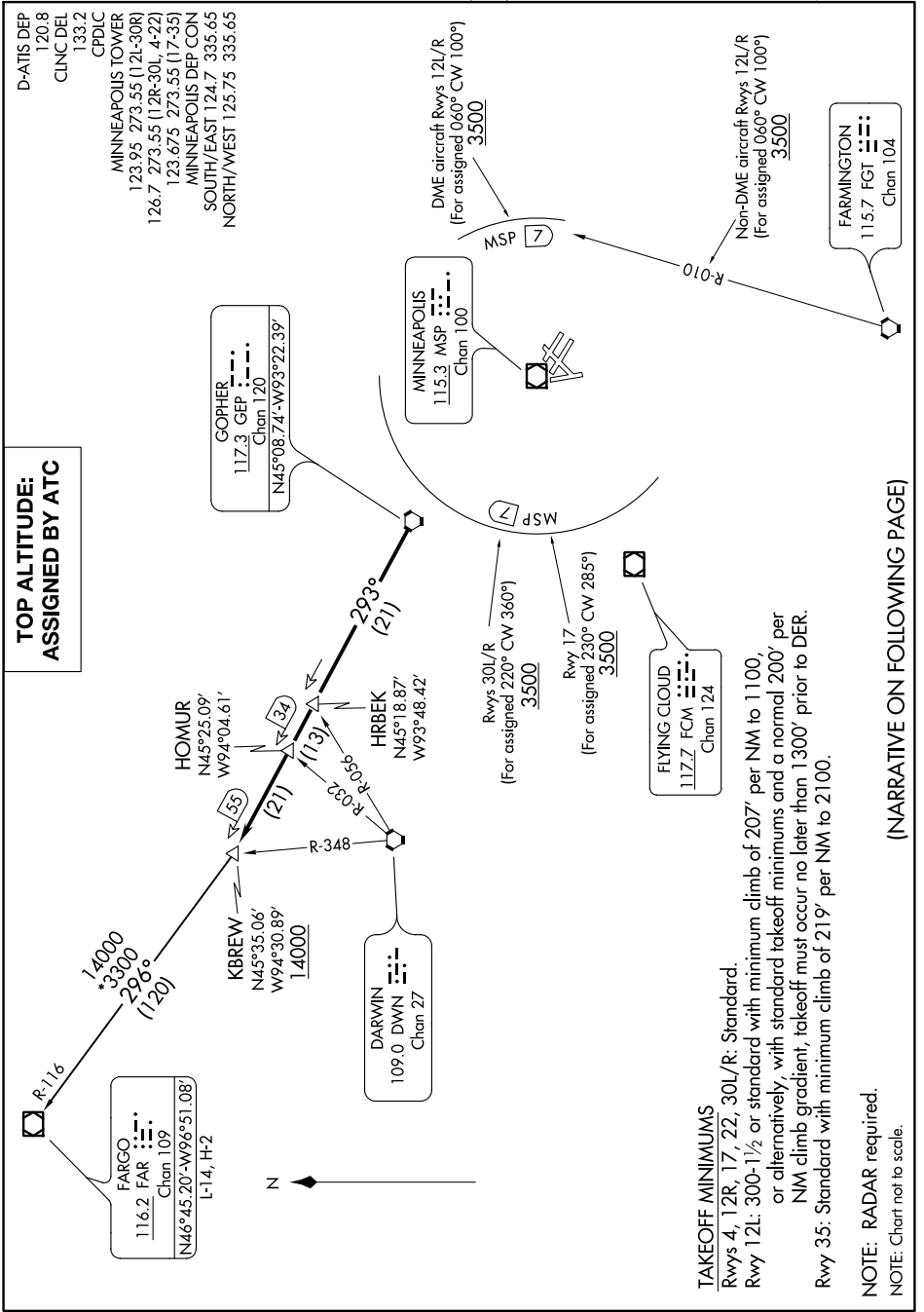


(KBREW1.KBREW) 18032
KBREW ONE DEPARTURE

MINNEAPOLIS-ST PAUL INTL/WOLD-CHAMBERLAIN (MSP)
 AL-264 (FAA) MINNEAPOLIS, MINNESOTA

NC-1, 18 JUL 2019 to 15 AUG 2019



(KBREW1.KBREW) 01FEB18
KBREW ONE DEPARTURE

MINNEAPOLIS, MINNESOTA
 MINNEAPOLIS-ST PAUL INTL/WOLD-CHAMBERLAIN (MSP)

TOP ALTITUDE: ASSIGNED BY ATC

TAKEOFF MINIMUMS
 Rwys 4, 12R, 17, 22, 30L/R: Standard.
 Rwy 12L: 300-1 1/2 or standard with minimum climb of 207' per NM to 1100,
 or alternatively, with standard takeoff minimums and a normal 200' per
 NM climb gradient, takeoff must occur no later than 1300' prior to DER.
 Rwy 35: Standard with minimum climb of 219' per NM to 2100.

NOTE: RADAR required.
 NOTE: Chart not to scale.

NARRATIVE ON FOLLOWING PAGE

NC-1, 18 JUL 2019 to 15 AUG 2019