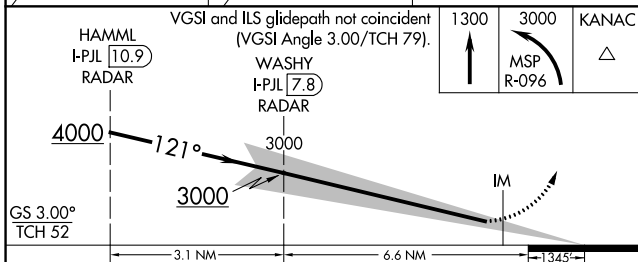
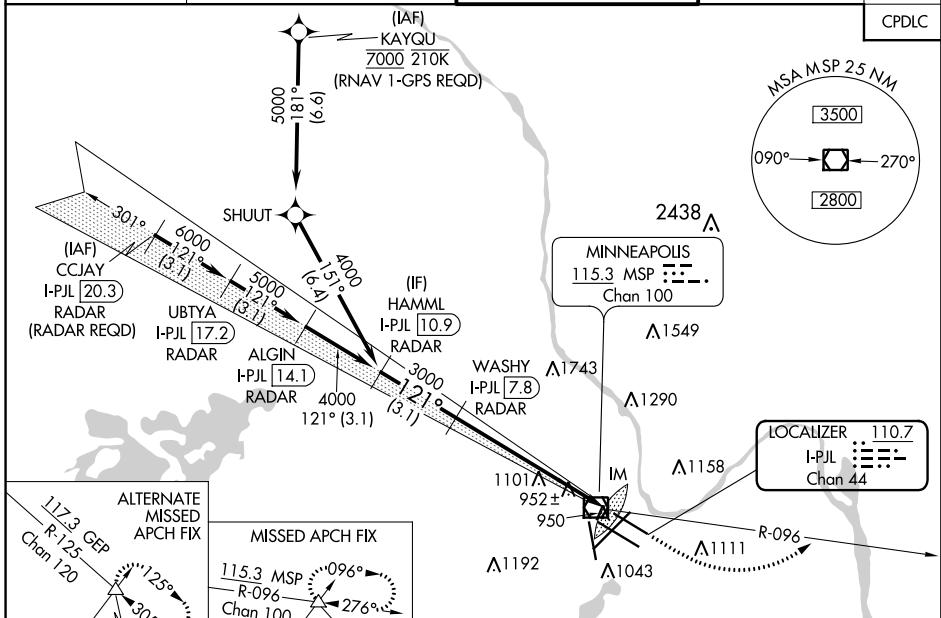


LOC/DME I-PJL <b>110.7</b> Chan 44	APP CRS <b>121°</b>	Rwy Idg TDZE <b>7620</b> <b>841</b> Apt Elev <b>842</b>
--	------------------------	---

# ILS RWY 12L (SA CAT I)

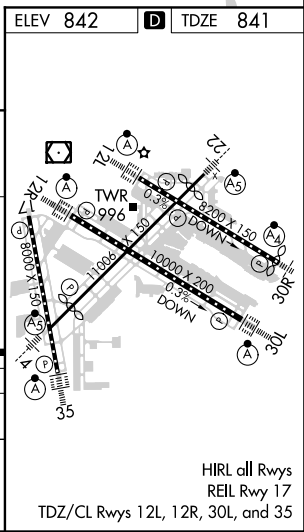
MINNEAPOLIS-ST PAUL INTL/WOLD-CHAMBERLAIN (MSP)

<p><b>⚠</b> Simultaneous approach authorized with Rwy 12R. Requires specific OPSPEC, MSPEC, or LOA approval and use of HUD to DH. DME or RADAR required.</p> <p><b>⚠</b> MISSED APPROACH: Climb to 1300, then climbing left turn to 3000 on MSP VOR/DME R-096 to KANAC INT/MSP 13.1 DME and hold.</p>	<p>ALSF-2</p>	<p>CPDLC</p>										
	<table border="1"> <tr> <th>D-ATIS</th> <th>MINNEAPOLIS APP CON</th> <th>MINNEAPOLIS TOWER</th> <th>GND CON</th> <th>CLNC DEL</th> </tr> <tr> <td>ARR <b>135.35</b> 239.275 DEP <b>120.8</b></td> <td><b>118.725 335.65</b> (Rwy 35) <b>119.3 335.65</b> (12L-30R, 4-22, 17) <b>126.95 335.65</b> (12R-30L)</td> <td><b>123.675 273.55</b> (17-35) <b>123.95 273.55</b> (12L-30R) <b>126.7 273.55</b> (12R-30L, 4-22)</td> <td><b>N 121.8 348.6</b> <b>S 121.9 348.6</b> <b>W 127.925 348.6</b></td> <td><b>133.2</b></td> </tr> </table>	D-ATIS	MINNEAPOLIS APP CON	MINNEAPOLIS TOWER	GND CON	CLNC DEL	ARR <b>135.35</b> 239.275 DEP <b>120.8</b>	<b>118.725 335.65</b> (Rwy 35) <b>119.3 335.65</b> (12L-30R, 4-22, 17) <b>126.95 335.65</b> (12R-30L)	<b>123.675 273.55</b> (17-35) <b>123.95 273.55</b> (12L-30R) <b>126.7 273.55</b> (12R-30L, 4-22)	<b>N 121.8 348.6</b> <b>S 121.9 348.6</b> <b>W 127.925 348.6</b>	<b>133.2</b>	
D-ATIS	MINNEAPOLIS APP CON	MINNEAPOLIS TOWER	GND CON	CLNC DEL								
ARR <b>135.35</b> 239.275 DEP <b>120.8</b>	<b>118.725 335.65</b> (Rwy 35) <b>119.3 335.65</b> (12L-30R, 4-22, 17) <b>126.95 335.65</b> (12R-30L)	<b>123.675 273.55</b> (17-35) <b>123.95 273.55</b> (12L-30R) <b>126.7 273.55</b> (12R-30L, 4-22)	<b>N 121.8 348.6</b> <b>S 121.9 348.6</b> <b>W 127.925 348.6</b>	<b>133.2</b>								



CATEGORY	A	B	C	D
S-ILS 12L	RA 147/14 150 DA 991			

**SA CATEGORY I ILS - SPECIAL AIRCREW & AIRCRAFT CERTIFICATION REQUIRED**



HIRL all Rwys  
REIL Rwy 17  
TDZ/CL Rwys 12L, 12R, 30L, and 35

NC-1, 18 JUL 2019 to 15 AUG 2019

NC-1, 18 JUL 2019 to 15 AUG 2019